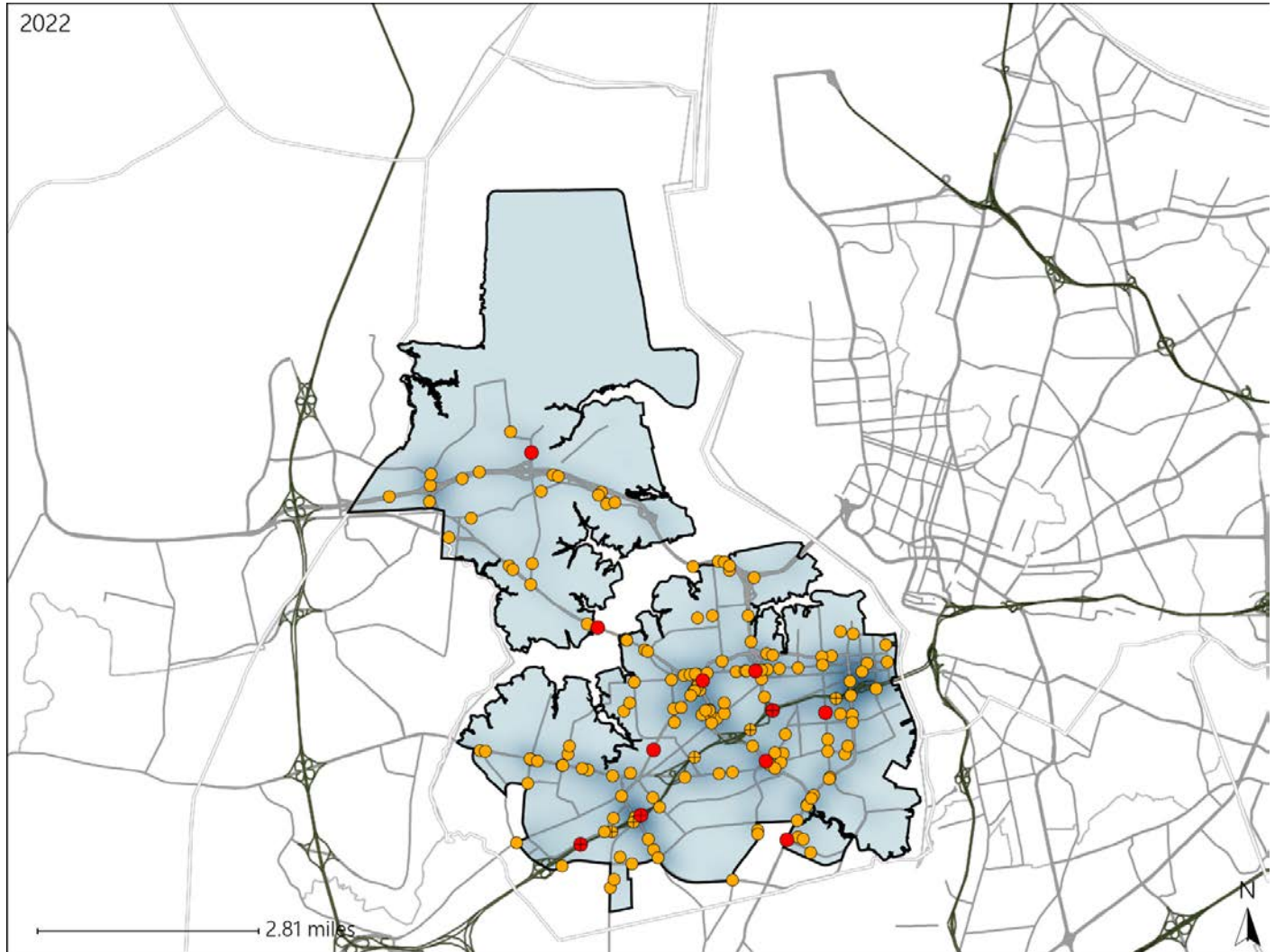


Virginia House District 88 Crash Statistics

Report Generated May, 2023

	Count	Highest Time Period(s)	Highest Day(s)	Highest Month(s)
Fatal Crashes	11	6:00pm - 8:59pm	Sunday	July
Resulting Fatalities	12	9:00pm - 11:59pm (54%)	(36%)	(45%)
Serious Injury Crashes	151	3:00pm - 5:59pm (23%)	Saturday (23%)	January (14%)



House District 88 Crashes

Interstate Crashes

- Fatal
- Serious Injury

Non-interstate Crashes

- Fatal
- Serious Injury

The blue gradient represents the density of all crashes.

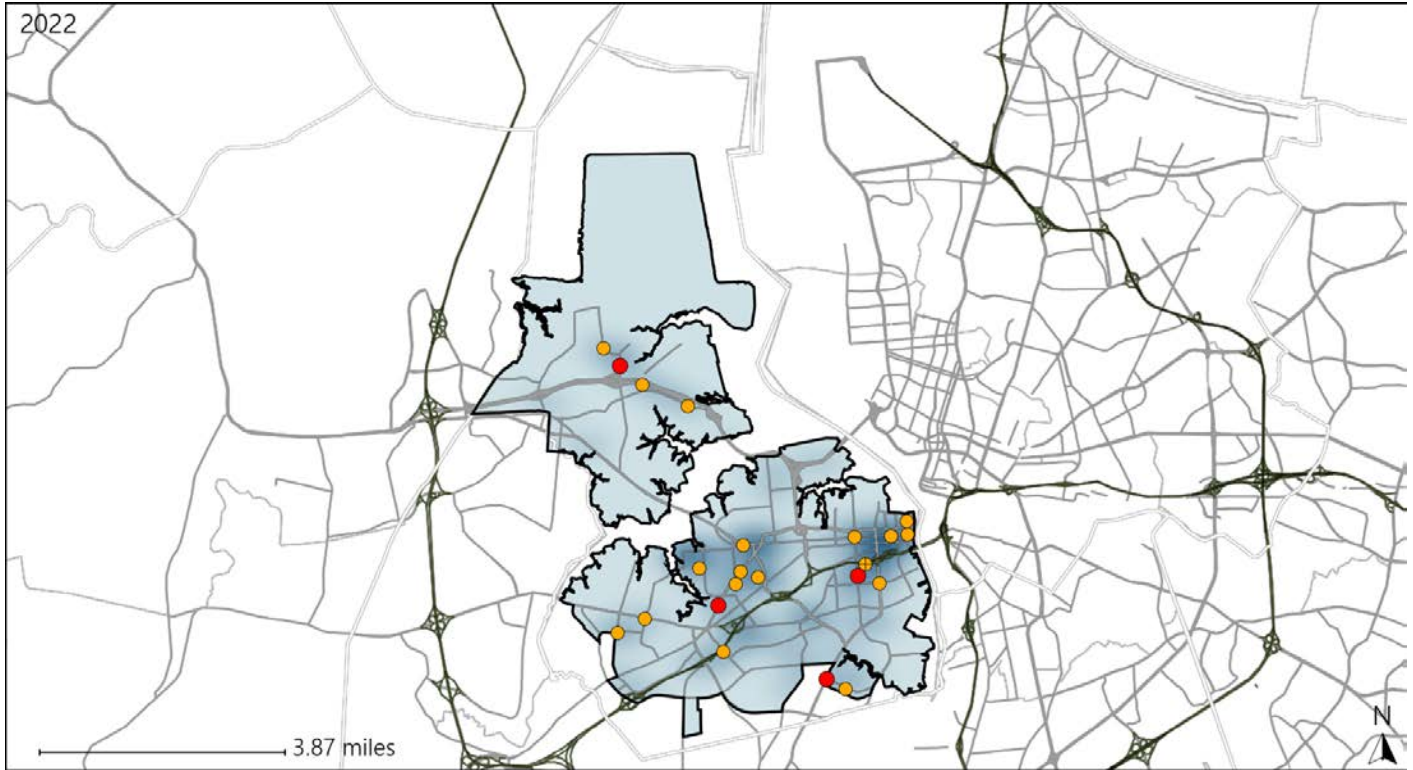


Available Crash Data - Calendar Year (CY)	CY 2019	CY 2020	CY 2021	CY 2022
Total Crashes	1185	1155	1348	1150
Fatal Crashes	5	2	11	11
Injury Crashes	625	602	649	553

Virginia House District 88 Alcohol Crash Statistics

Report Generated May, 2023

	Count	Highest Time Period(s)	Highest Day(s)	Highest Month(s)
Fatal Crashes	4	9:00pm - 11:59pm	Monday • Saturday	March
Resulting Fatalities	4	(50%)	(50%)	(50%)
Serious Injury Crashes	18	9:00pm - 11:59pm	Saturday	September
		(33%)	(33%)	(28%)



House District 88 Alcohol-Related Crashes

Interstate Crashes Non-interstate Crashes
 ● Fatal ● Fatal
 ⊕ Serious Injury ⊕ Serious Injury

The blue gradient represents the density of all alcohol-related crashes.

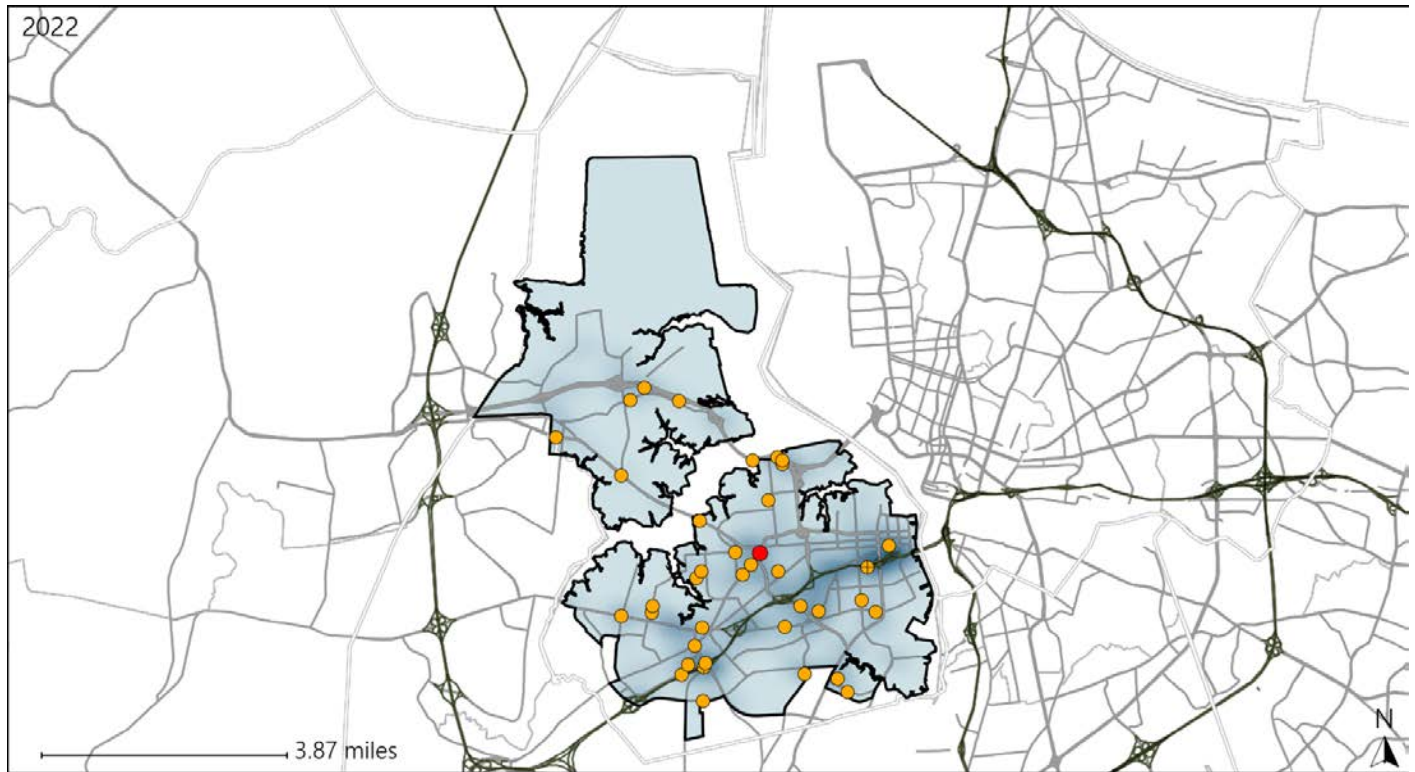


Available Crash Data - Calendar Year (CY)	CY 2019	CY 2020	CY 2021	CY 2022
Total Crashes	1185	1155	1348	1150
Fatal Crashes	5	2	11	11
Injury Crashes	625	602	649	553
Alcohol-Related Fatal Crashes	1	1	1	4
Percent of Alcohol-Related Fatal Crashes to Total Fatal Crashes	20%	50%	9%	36%
Alcohol-Related Injury Crashes	59	40	54	35
Percent of Alcohol-Related Injury Crashes to Total Injury Crashes	9%	7%	8%	6%

Virginia House District 88 Speed Crash Statistics

Report Generated May, 2023

	Count	Highest Time Period(s)	Highest Day(s)	Highest Month(s)
Fatal Crashes	1	6:00pm - 8:59pm	Saturday	July
Resulting Fatalities	1	(100%)	(100%)	(100%)
Serious Injury Crashes	37	3:00pm - 5:59pm 9:00am - 11:59am	Saturday	March - May
		(44%)	(22%)	(38%)



House District 88 Speed-Related Crashes

Interstate Crashes Non-interstate Crashes
 ● Fatal ● Fatal
 ⊕ Serious Injury ⊕ Serious Injury

The blue gradient represents the density of all speed-related crashes.

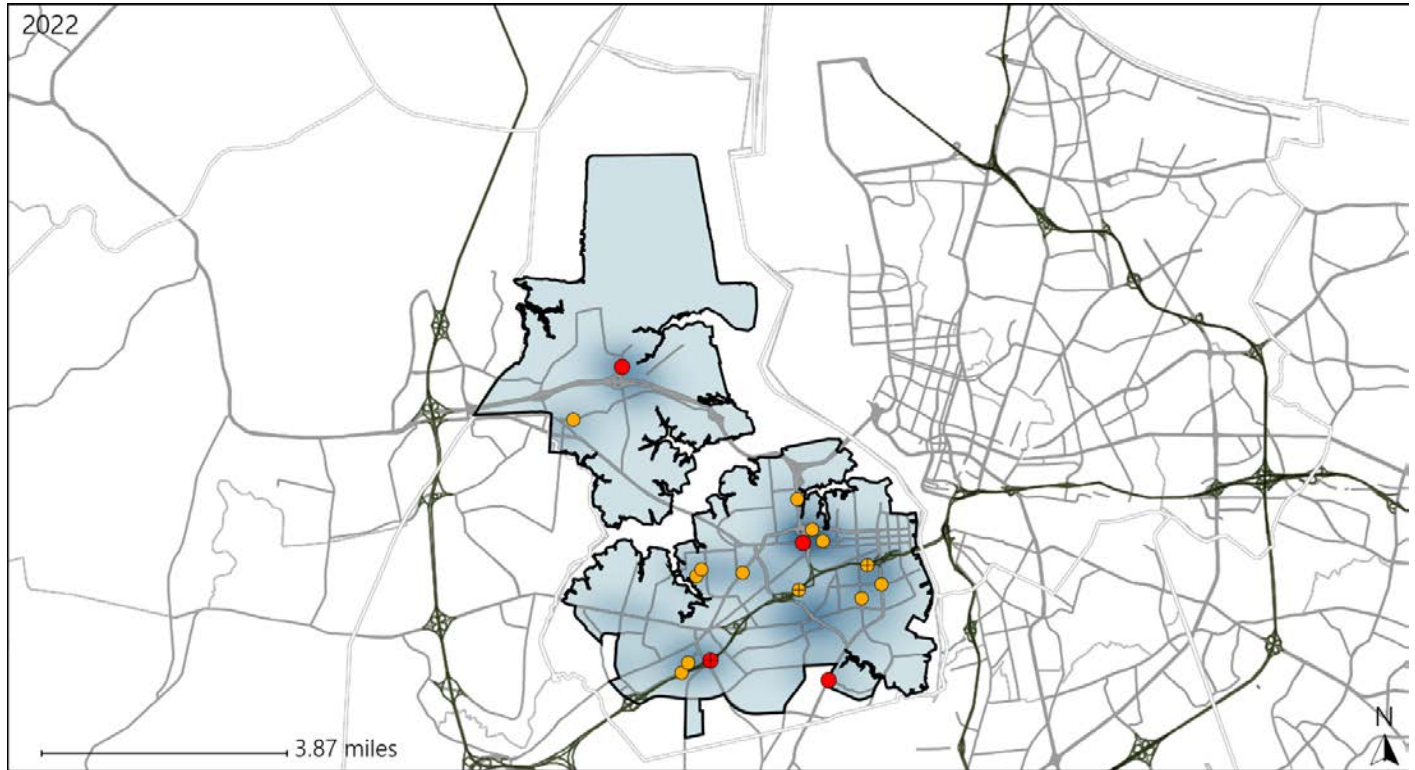


Available Crash Data - Calendar Year (CY)	CY 2019	CY 2020	CY 2021	CY 2022
Total Crashes	1185	1155	1348	1150
Fatal Crashes	5	2	11	11
Injury Crashes	625	602	649	553
Speed-Related Fatal Crashes	2	1	6	1
Percent of Speed-Related Fatal Crashes to Total Fatal Crashes	40%	50%	55%	9%
Speed-Related Injury Crashes	126	117	152	121
Percent of Speed-Related Injury Crashes to Total Injury Crashes	20%	19%	23%	22%

Virginia House District 88 Unrestrained Crash Statistics

Report Generated May, 2023

	Count	Highest Time Period(s)	Highest Day(s)	Highest Month(s)
Fatal Crashes	4	3:00am - 5:59am	Sunday	August + July
Unrestrained Fatalities	4	6:00pm - 8:59pm (50%)	(75%)	(50%)
Serious Injury Crashes	13	Midnight - 2:59am (31%)	Saturday (31%)	March (23%)



House District 88 Unrestrained-Related Crashes

- | | |
|--|--|
| Interstate Crashes | Non-interstate Crashes |
| ● Fatal | ● Fatal |
| ● Serious Injury | ● Serious Injury |

The blue gradient represents the density of all unrestrained-related crashes.

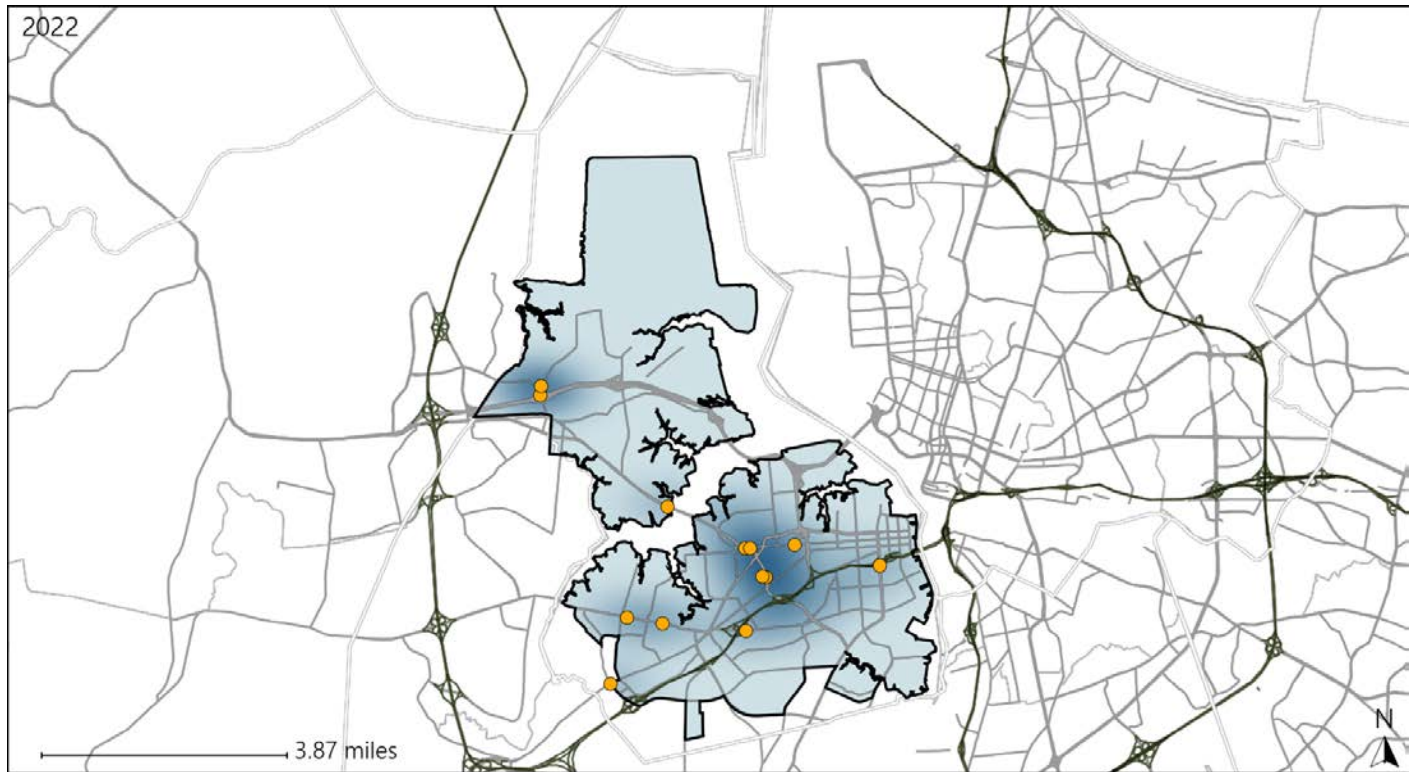


Available Crash Data - Calendar Year (CY)	CY 2019	CY 2020	CY 2021	CY 2022
Total Crashes	1185	1155	1348	1150
Fatalities	5	2	12	12
Injuries	892	872	955	807
Unrestrained Fatalities	4	1	3	4
Percent of Unrestrained Fatalities to Total Fatalities	80%	50%	25%	33%
Unrestrained Injuries	59	63	71	40
Percent of Unrestrained Injuries to Total Injuries	7%	7%	7%	5%

Virginia House District 88 Bicycle Crash Statistics

Report Generated May, 2023

	Count	Highest Time Period(s)	Highest Day(s)	Highest Month(s)
Fatal Crashes	0	-	-	-
Bicycle Fatalities	0	-	-	-
Serious Injury Crashes	13	3:00pm - 5:59pm 6:00am - 8:59am (46%)	Friday (31%)	August + May (46%)



House District 88 Bicycle-Related Crashes

- | | |
|--------------------|------------------------|
| Interstate Crashes | Non-interstate Crashes |
| ● Fatal | ● Fatal |
| ⊕ Serious Injury | ● Serious Injury |

The blue gradient represents the density of all bicycle-related crashes.

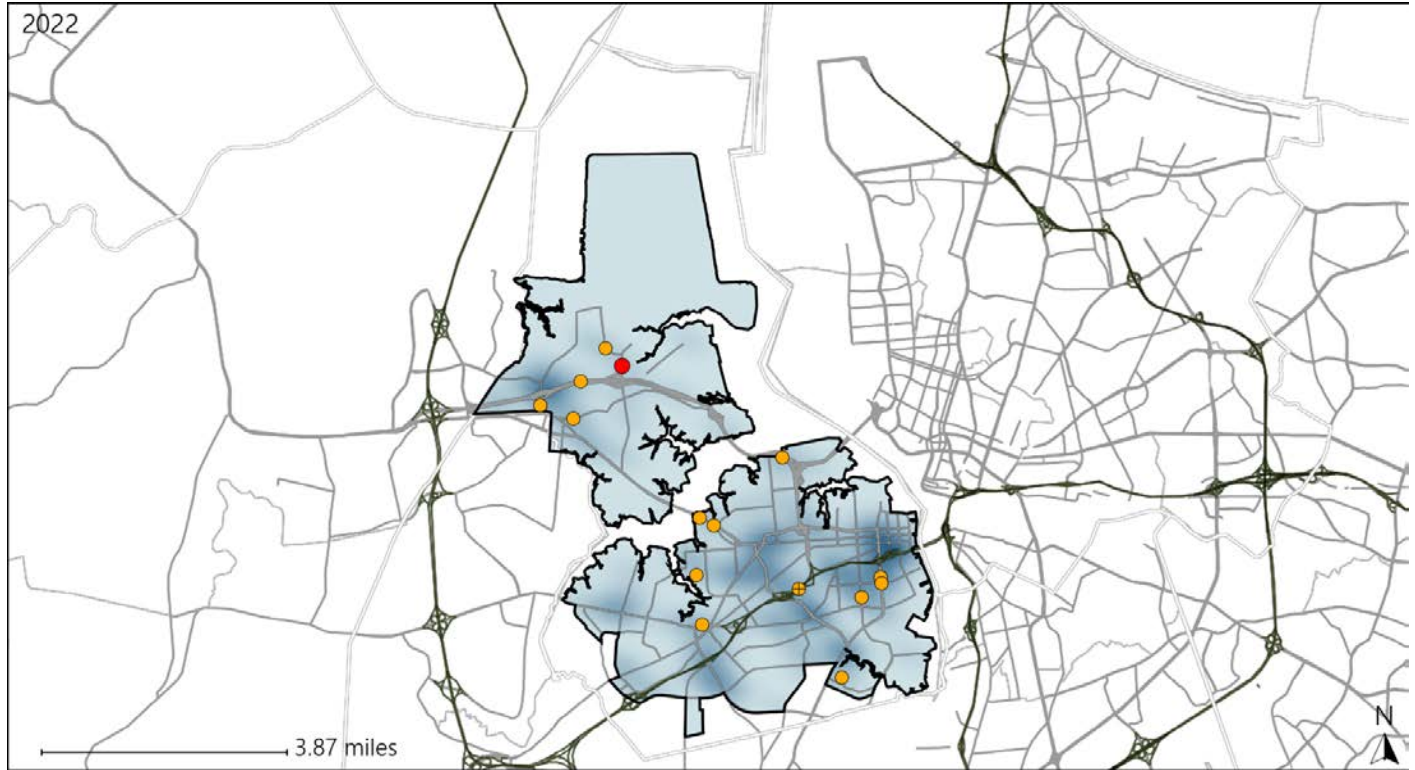


Available Crash Data - Calendar Year (CY)	CY 2019	CY 2020	CY 2021	CY 2022
Total Crashes	1185	1155	1348	1150
Fatal Crashes	5	2	11	11
Injury Crashes	625	602	649	553
Bicycle-Related Fatal Crashes	0	0	1	0
Percent of Bicycle-Related Fatal Crashes to Total Fatal Crashes	0%	0%	9%	0%
Bicycle-Related Injury Crashes	15	10	9	18
Percent of Bicycle-Related Injury Crashes to Total Injury Crashes	2%	2%	1%	3%

Virginia House District 88 Distracted Driving Crash Statistics

Report Generated May, 2023

	Count	Highest Time Period(s)	Highest Day(s)	Highest Month(s)
Fatal Crashes	1	3:00am - 5:59am	Sunday	March
Resulting Fatalities	1	(100%)	(100%)	(100%)
Serious Injury Crashes	14	Noon - 2:59pm	Saturday • Sunday	March
		(29%)	(42%)	(21%)



House District 88 Distracted Driving-Related Crashes

- | | |
|--------------------|------------------------|
| Interstate Crashes | Non-interstate Crashes |
| Fatal | Fatal |
| Serious Injury | Serious Injury |

The blue gradient represents the density of all distracted driving-related crashes.



Available Crash Data - Calendar Year (CY)	CY 2019	CY 2020	CY 2021	CY 2022
Total Crashes	1185	1155	1348	1150
Fatal Crashes	5	2	11	11
Injury Crashes	625	602	649	553
Distracted Driving-Related Fatal Crashes	2	2	2	1
Percent of Distracted Driving-Related Fatal Crashes to Total Fatal Crashes	40%	100%	18%	9%
Distracted Driving-Related Injury Crashes	112	116	94	72
Percent of Distracted Driving-Related Injury Crashes to Total Injury Crashes	18%	19%	14%	13%