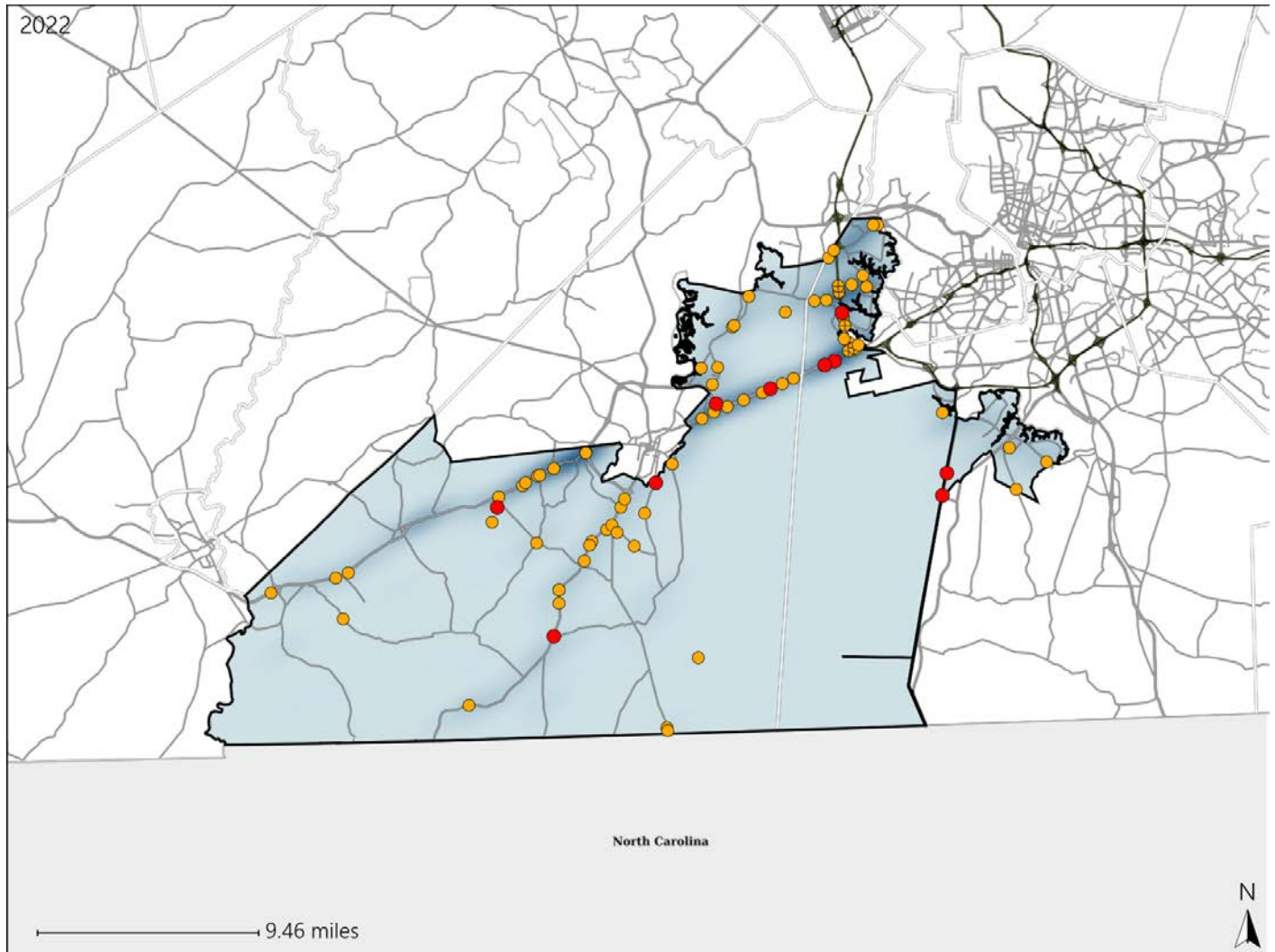


Virginia House District 89 Crash Statistics

Report Generated May, 2023

	Count	Highest Time Period(s)	Highest Day(s)	Highest Month(s)
Fatal Crashes	10	Midnight - 2:59am	Saturday	May • November
Resulting Fatalities	10	(40%)	(30%)	(40%)
Serious Injury Crashes	76	3:00pm - 5:59pm Noon - 2:59pm	Friday	October
		(40%)	(26%)	(14%)



House District 89 Crashes

Interstate Crashes

- Fatal
- Serious Injury

Non-interstate Crashes

- Fatal
- Serious Injury

The blue gradient represents the density of all crashes.

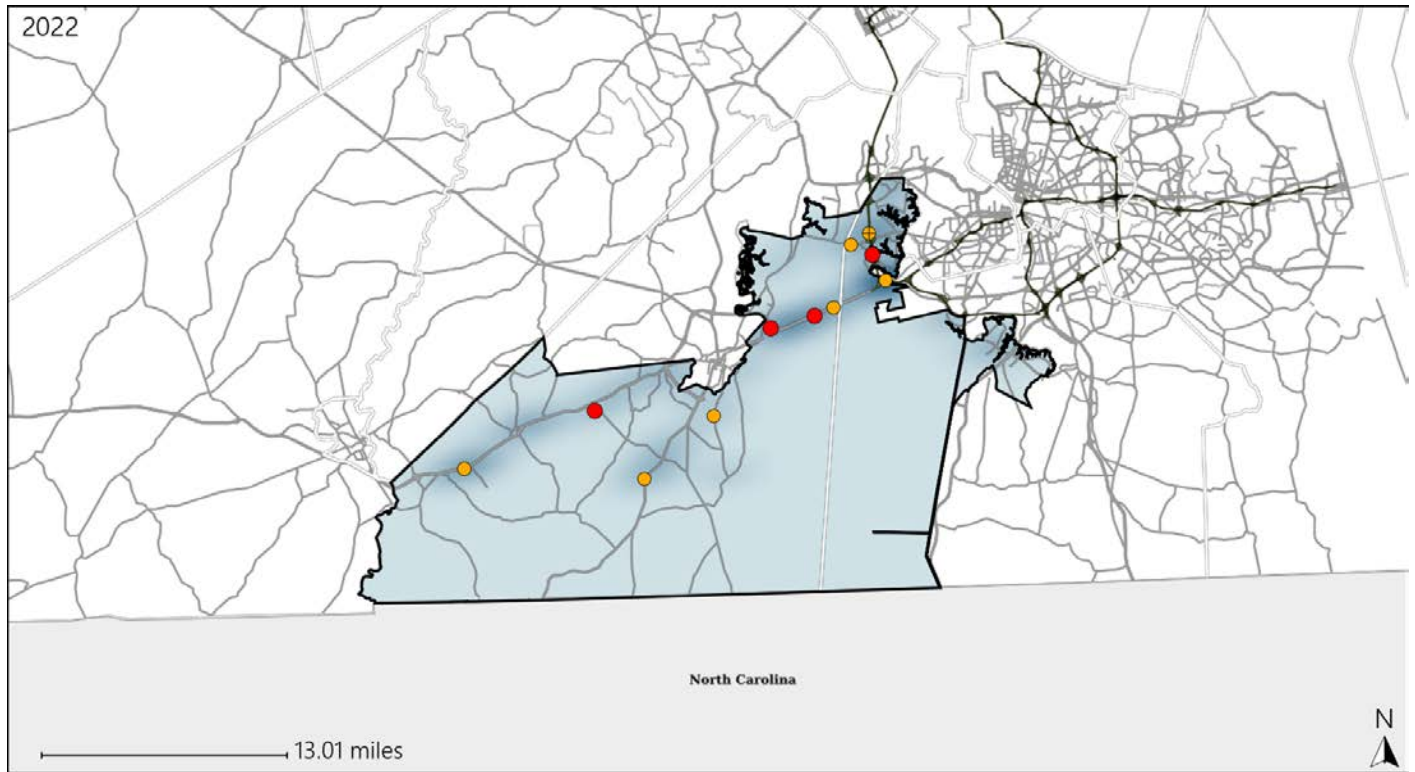


Available Crash Data - Calendar Year (CY)	CY 2019	CY 2020	CY 2021	CY 2022
Total Crashes	1099	972	1108	1169
Fatal Crashes	13	9	10	10
Injury Crashes	501	402	515	508

Virginia House District 89 Alcohol Crash Statistics

Report Generated May, 2023

	Count	Highest Time Period(s)	Highest Day(s)	Highest Month(s)
Fatal Crashes	4	Midnight - 2:59am	Saturday • Sunday	February • June
Resulting Fatalities	4	(75%)	(100%)	(50%)
Serious Injury Crashes	7	9:00pm - 11:59pm Midnight - 2:59am	Friday	December • November
		(86%)	(43%)	(58%)



House District 89 Alcohol-Related Crashes

Interstate Crashes Non-interstate Crashes
 ● Fatal ● Fatal
 ⊕ Serious Injury ⊕ Serious Injury

The blue gradient represents the density of all alcohol-related crashes.

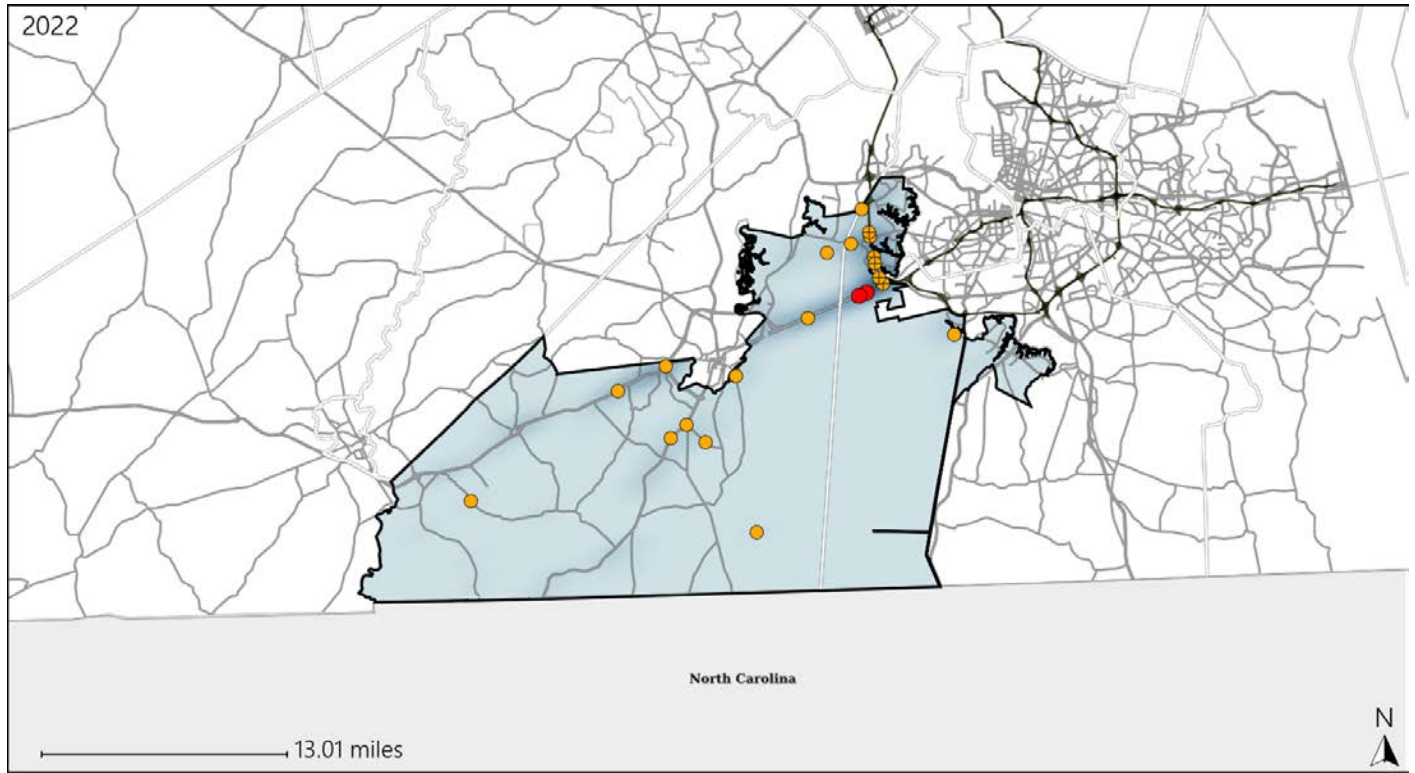


Available Crash Data - Calendar Year (CY)	CY 2019	CY 2020	CY 2021	CY 2022
Total Crashes	1099	972	1108	1169
Fatal Crashes	13	9	10	10
Injury Crashes	501	402	515	508
Alcohol-Related Fatal Crashes	7	1	1	4
Percent of Alcohol-Related Fatal Crashes to Total Fatal Crashes	54%	11%	10%	40%
Alcohol-Related Injury Crashes	32	35	25	24
Percent of Alcohol-Related Injury Crashes to Total Injury Crashes	6%	9%	5%	5%

Virginia House District 89 Speed Crash Statistics

Report Generated May, 2023

	Count	Highest Time Period(s)	Highest Day(s)	Highest Month(s)
Fatal Crashes	2	6:00am - 8:59am	Monday • Wednesday	January • July
Resulting Fatalities	2	9:00pm - 11:59pm (100%)	(100%)	(100%)
Serious Injury Crashes	22	3:00pm - 5:59pm 6:00pm - 8:59pm (36%)	Friday (36%)	April • December (36%)



House District 89 Speed-Related Crashes

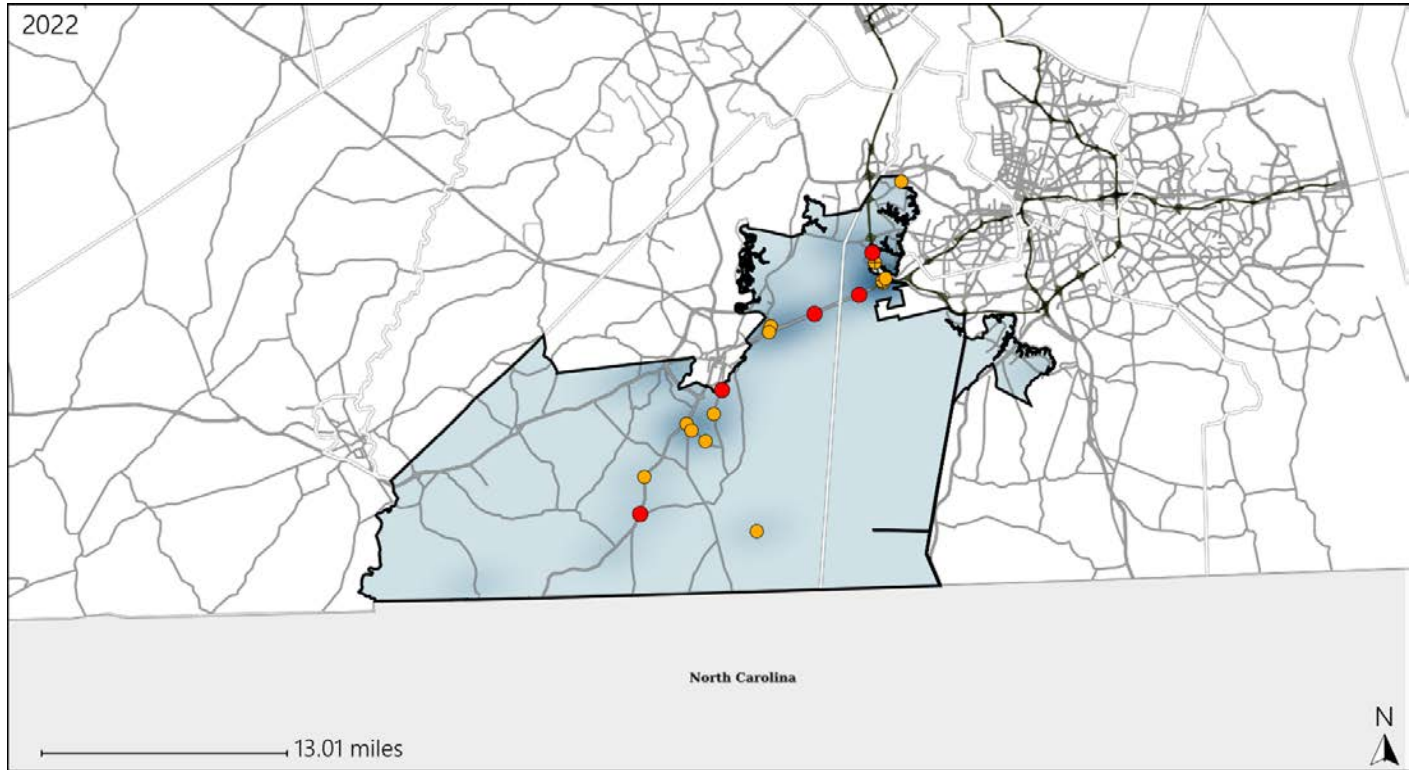
Interstate Crashes Non-interstate Crashes
 ● Fatal ● Fatal
 ⊕ Serious Injury ⊕ Serious Injury
 The blue gradient represents the density of all speed-related crashes.

Available Crash Data - Calendar Year (CY)	CY 2019	CY 2020	CY 2021	CY 2022
Total Crashes	1099	972	1108	1169
Fatal Crashes	13	9	10	10
Injury Crashes	501	402	515	508
Speed-Related Fatal Crashes	7	4	4	2
Percent of Speed-Related Fatal Crashes to Total Fatal Crashes	54%	44%	40%	20%
Speed-Related Injury Crashes	83	66	91	94
Percent of Speed-Related Injury Crashes to Total Injury Crashes	17%	16%	18%	19%

Virginia House District 89 Unrestrained Crash Statistics

Report Generated May, 2023

	Count	Highest Time Period(s)	Highest Day(s)	Highest Month(s)
Fatal Crashes	5	9:00pm - 11:59pm	Friday • Monday	February • January
Unrestrained Fatalities	5	Midnight - 2:59am (80%)	(40%)	(40%)
Serious Injury Crashes	13	3:00pm - 5:59pm (23%)	Friday (38%)	July • October (46%)



House District 89 Unrestrained-Related Crashes

Interstate Crashes

Non-interstate Crashes

- Fatal
- Serious Injury

- Fatal
- Serious Injury

The blue gradient represents the density of all unrestrained-related crashes.

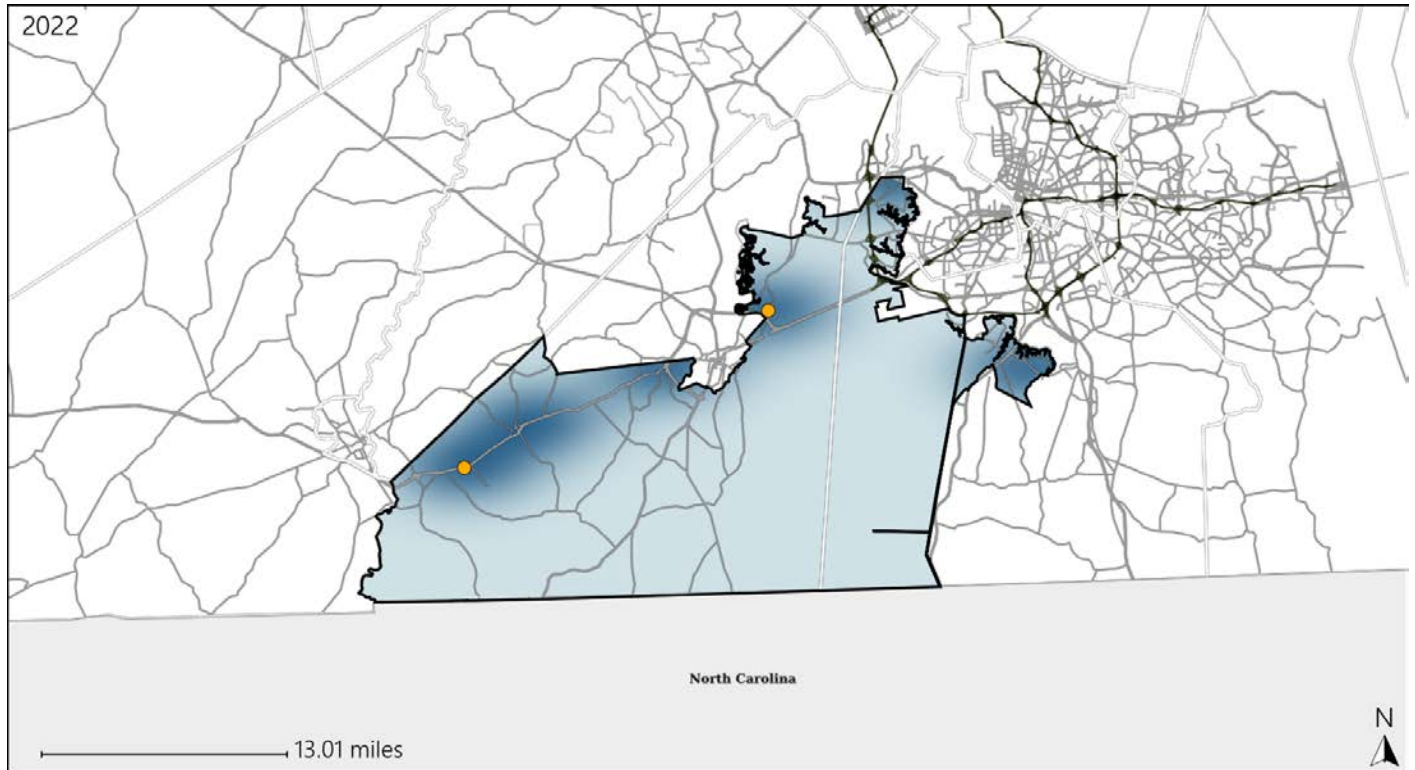


Available Crash Data - Calendar Year (CY)	CY 2019	CY 2020	CY 2021	CY 2022
Total Crashes	1099	972	1108	1169
Fatalities	14	9	10	10
Injuries	771	577	795	782
Unrestrained Fatalities	5	1	2	5
Percent of Unrestrained Fatalities to Total Fatalities	36%	11%	20%	50%
Unrestrained Injuries	44	31	48	41
Percent of Unrestrained Injuries to Total Injuries	6%	5%	6%	5%

Virginia House District 89 Pedestrian Crash Statistics

Report Generated May, 2023

	Count	Highest Time Period(s)	Highest Day(s)	Highest Month(s)
Fatal Crashes	0	-	-	-
Pedestrian Fatalities	0	-	-	-
Serious Injury Crashes	2	Midnight - 2:59am (100%)	Sunday • Tuesday (100%)	January • October (100%)



House District 89 Pedestrian-Related Crashes

Interstate Crashes Non-interstate Crashes
 ● Fatal ● Fatal
 ⊕ Serious Injury ⊕ Serious Injury

The blue gradient represents the density of all pedestrian-related crashes.

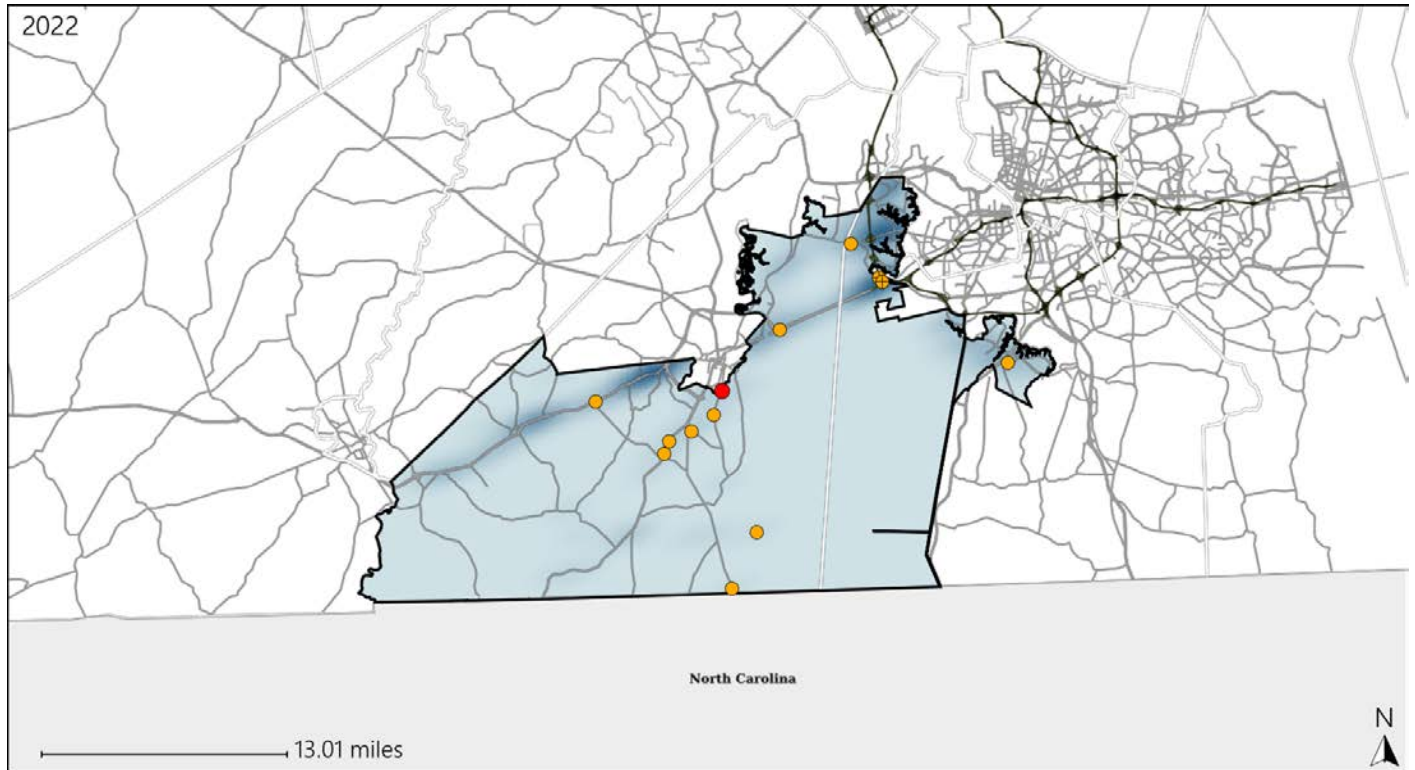


Available Crash Data - Calendar Year (CY)	CY 2019	CY 2020	CY 2021	CY 2022
Total Crashes	1099	972	1108	1169
Fatal Crashes	13	9	10	10
Injury Crashes	501	402	515	508
Pedestrian-Related Fatal Crashes	2	2	2	0
Percent of Pedestrian-Related Fatal Crashes to Total Fatal Crashes	15%	22%	20%	0%
Pedestrian-Related Injury Crashes	10	4	8	6
Percent of Pedestrian-Related Injury Crashes to Total Injury Crashes	2%	1%	2%	1%

Virginia House District 89 Distracted Driving Crash Statistics

Report Generated May, 2023

	Count	Highest Time Period(s)	Highest Day(s)	Highest Month(s)
Fatal Crashes	1	6:00am - 8:59am	Friday	May
Resulting Fatalities	1	(100%)	(100%)	(100%)
Serious Injury Crashes	12	9:00pm - 11:59pm	Wednesday	October
		(42%)	(33%)	(33%)



House District 89 Distracted Driving-Related Crashes

- | | |
|--------------------|------------------------|
| Interstate Crashes | Non-interstate Crashes |
| Fatal | Fatal |
| Serious Injury | Serious Injury |

The blue gradient represents the density of all distracted driving-related crashes.



Available Crash Data - Calendar Year (CY)	CY 2019	CY 2020	CY 2021	CY 2022
Total Crashes	1099	972	1108	1169
Fatal Crashes	13	9	10	10
Injury Crashes	501	402	515	508
Distracted Driving-Related Fatal Crashes	0	1	2	1
Percent of Distracted Driving-Related Fatal Crashes to Total Fatal Crashes	0%	11%	20%	10%
Distracted Driving-Related Injury Crashes	95	76	84	78
Percent of Distracted Driving-Related Injury Crashes to Total Injury Crashes	19%	19%	16%	15%