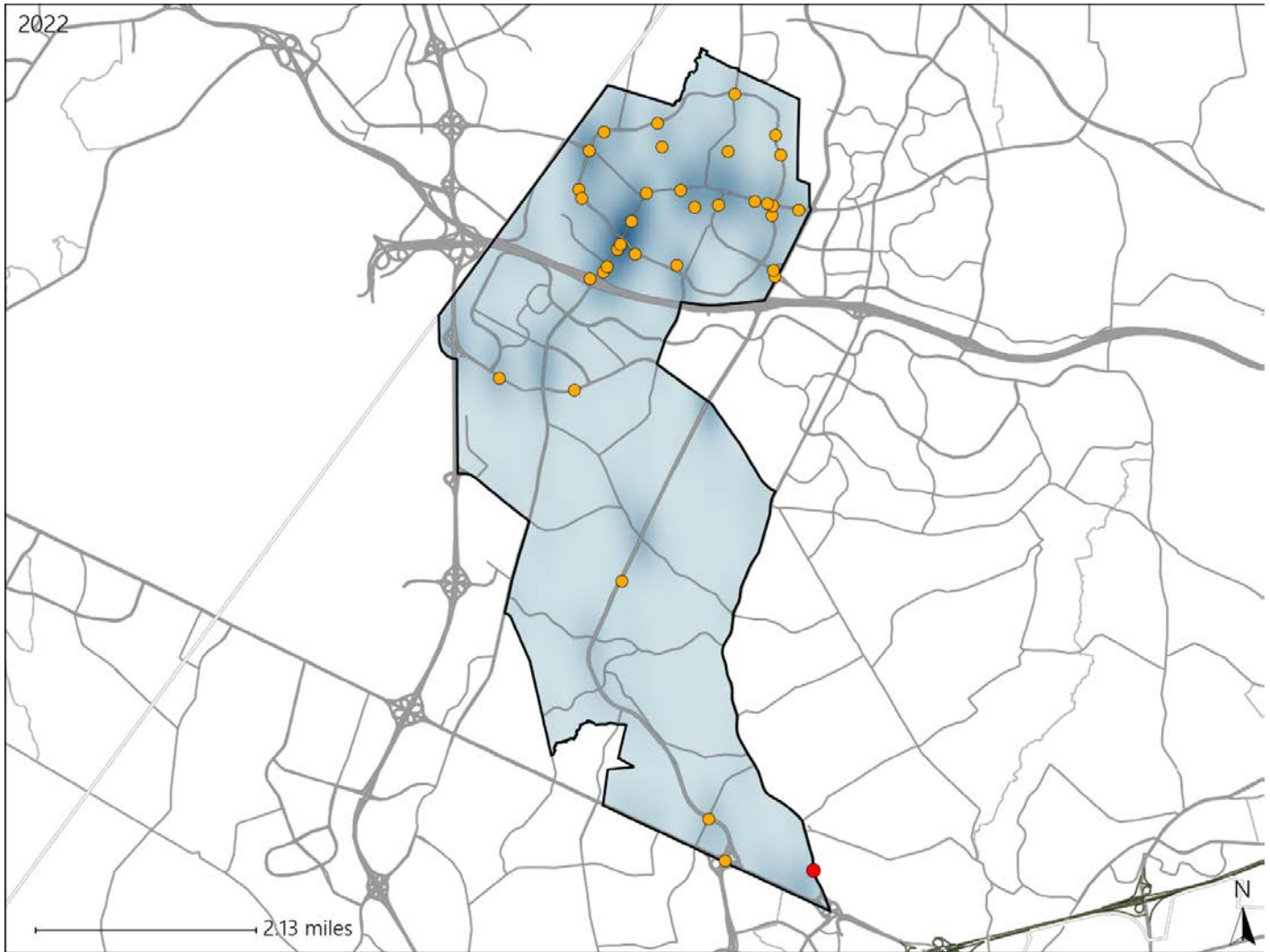


# Virginia House District 8 Crash Statistics

Report Generated May, 2023

	Count	Highest Time Period(s)	Highest Day(s)	Highest Month(s)
<b>Fatal Crashes</b>	<b>1</b>	<b>6:00pm - 8:59pm</b>	<b>Tuesday</b>	<b>October</b>
<b>Resulting Fatalities</b>	<b>1</b>	(100%)	(100%)	(100%)
<b>Serious Injury Crashes</b>	<b>34</b>	<b>3:00pm - 5:59pm</b>	<b>Sunday</b>	<b>October</b>
		(29%)	(26%)	(18%)



### House District 8 Crashes

Interstate Crashes

- Fatal
- Serious Injury

Non-interstate Crashes

- Fatal
- Serious Injury

The blue gradient represents the density of all crashes.

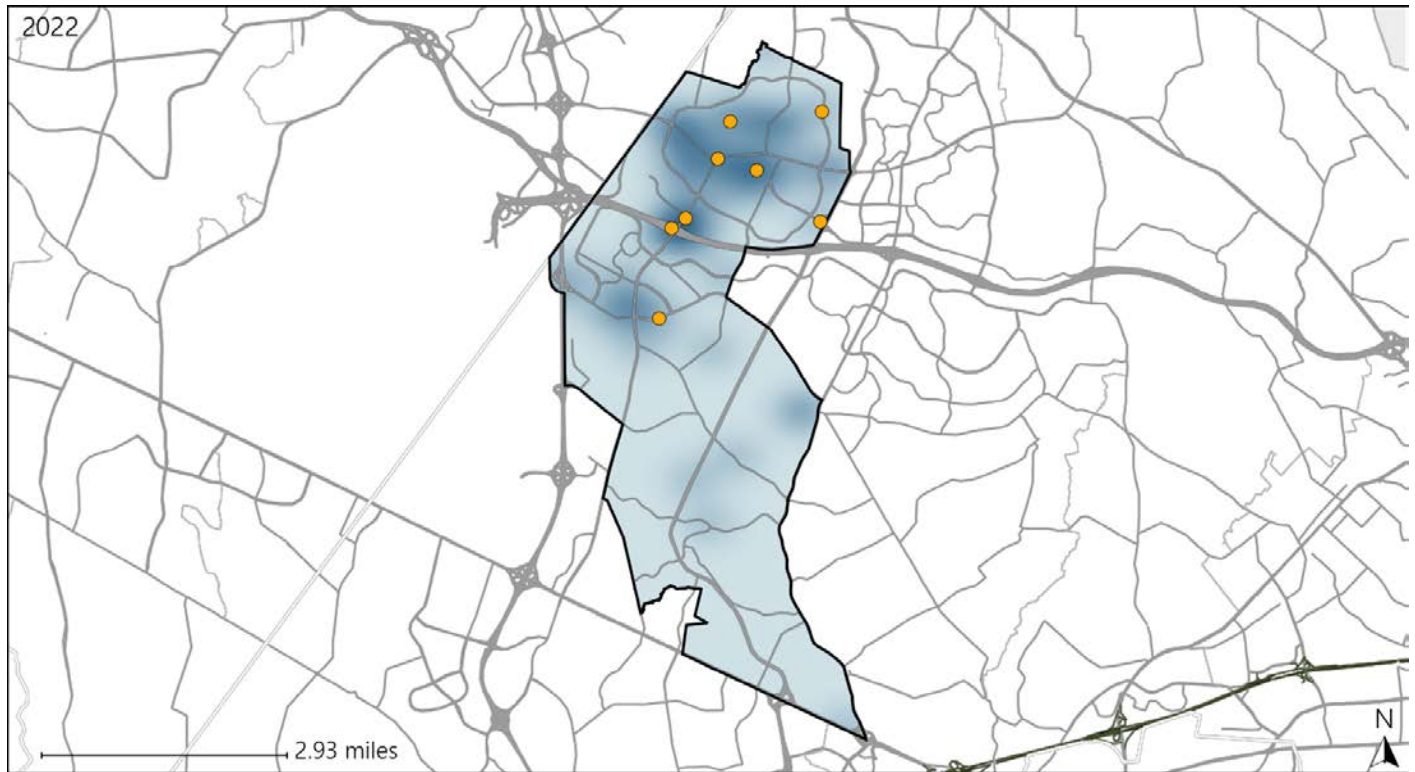


Available Crash Data - Calendar Year (CY)	CY 2019	CY 2020	CY 2021	CY 2022
<b>Total Crashes</b>	<b>813</b>	<b>483</b>	<b>574</b>	<b>618</b>
<b>Fatal Crashes</b>	<b>3</b>	<b>1</b>	<b>0</b>	<b>1</b>
<b>Injury Crashes</b>	<b>382</b>	<b>236</b>	<b>255</b>	<b>297</b>

# Virginia House District 8 Alcohol Crash Statistics

Report Generated May, 2023

	Count	Highest Time Period(s)	Highest Day(s)	Highest Month(s)
<b>Fatal Crashes</b>	0	-	-	-
<b>Resulting Fatalities</b>	0	-	-	-
<b>Serious Injury Crashes</b>	8	3:00pm - 5:59pm Midnight - 2:59am (50%)	Sunday (38%)	November (25%)



### House District 8 Alcohol-Related Crashes

Interstate Crashes                      Non-interstate Crashes  
 ● Fatal                                      ● Fatal  
 ⊕ Serious Injury                          ⊕ Serious Injury

The blue gradient represents the density of all alcohol-related crashes.

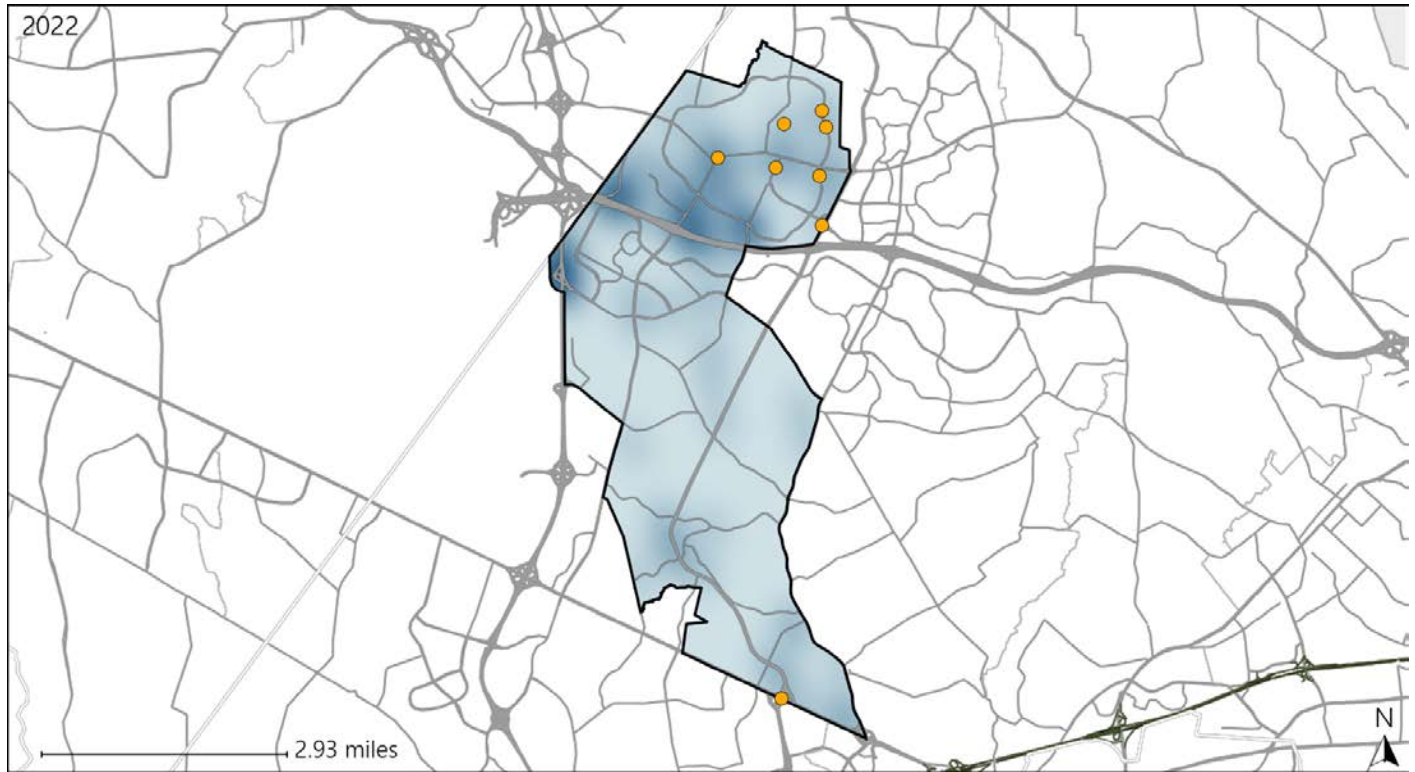


Available Crash Data - Calendar Year (CY)	CY 2019	CY 2020	CY 2021	CY 2022
Total Crashes	813	483	574	618
Fatal Crashes	3	1	0	1
Injury Crashes	382	236	255	297
Alcohol-Related Fatal Crashes	3	0	0	0
Percent of Alcohol-Related Fatal Crashes to Total Fatal Crashes	100%	0%	0%	0%
Alcohol-Related Injury Crashes	16	25	18	26
Percent of Alcohol-Related Injury Crashes to Total Injury Crashes	4%	11%	7%	9%

# Virginia House District 8 Speed Crash Statistics

Report Generated May, 2023

	Count	Highest Time Period(s)	Highest Day(s)	Highest Month(s)
<b>Fatal Crashes</b>	0	-	-	-
<b>Resulting Fatalities</b>	0	-	-	-
<b>Serious Injury Crashes</b>	8	3:00pm - 5:59pm (38%)	Sunday - Wednesday (50%)	March - September (50%)



## House District 8 Speed-Related Crashes

Interstate Crashes                      Non-interstate Crashes  
 ● Fatal                                      ● Fatal  
 ● Serious Injury                          ● Serious Injury

The blue gradient represents the density of all speed-related crashes.

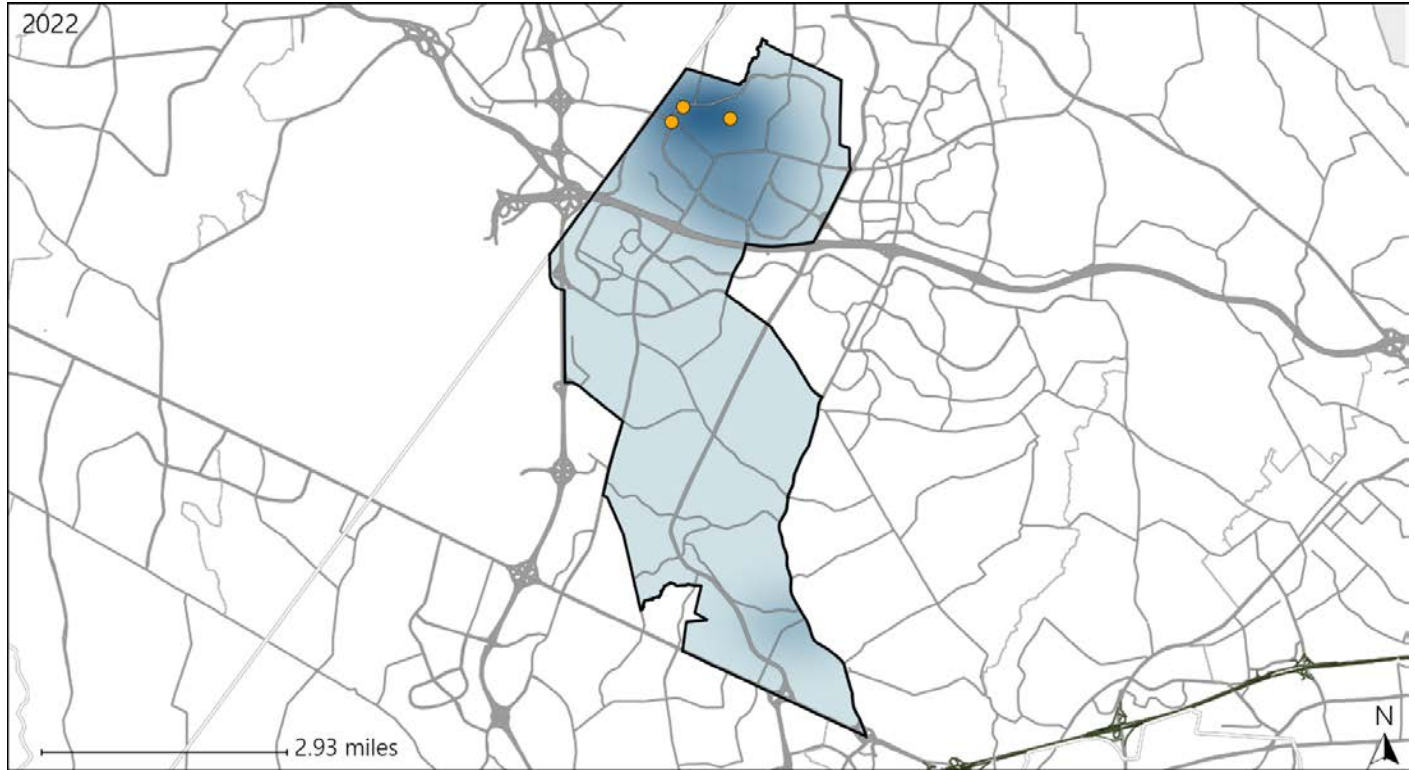


Available Crash Data - Calendar Year (CY)	CY 2019	CY 2020	CY 2021	CY 2022
Total Crashes	813	483	574	618
Fatal Crashes	3	1	0	1
Injury Crashes	382	236	255	297
Speed-Related Fatal Crashes	2	0	0	0
Percent of Speed-Related Fatal Crashes to Total Fatal Crashes	67%	0%	0%	0%
Speed-Related Injury Crashes	39	33	45	42
Percent of Speed-Related Injury Crashes to Total Injury Crashes	10%	14%	18%	14%

# Virginia House District 8 Unrestrained Crash Statistics

Report Generated May, 2023

	Count	Highest Time Period(s)	Highest Day(s)	Highest Month(s)
<b>Fatal Crashes</b>	0	-	-	-
<b>Unrestrained Fatalities</b>	0	-	-	-
<b>Serious Injury Crashes</b>	3	Midnight - 2:59am (67%)	Monday + Sunday (66%)	October (67%)



## House District 8 Unrestrained-Related Crashes

Interstate Crashes

- Fatal
- Serious Injury

Non-interstate Crashes

- Fatal
- Serious Injury

The blue gradient represents the density of all unrestrained-related crashes.



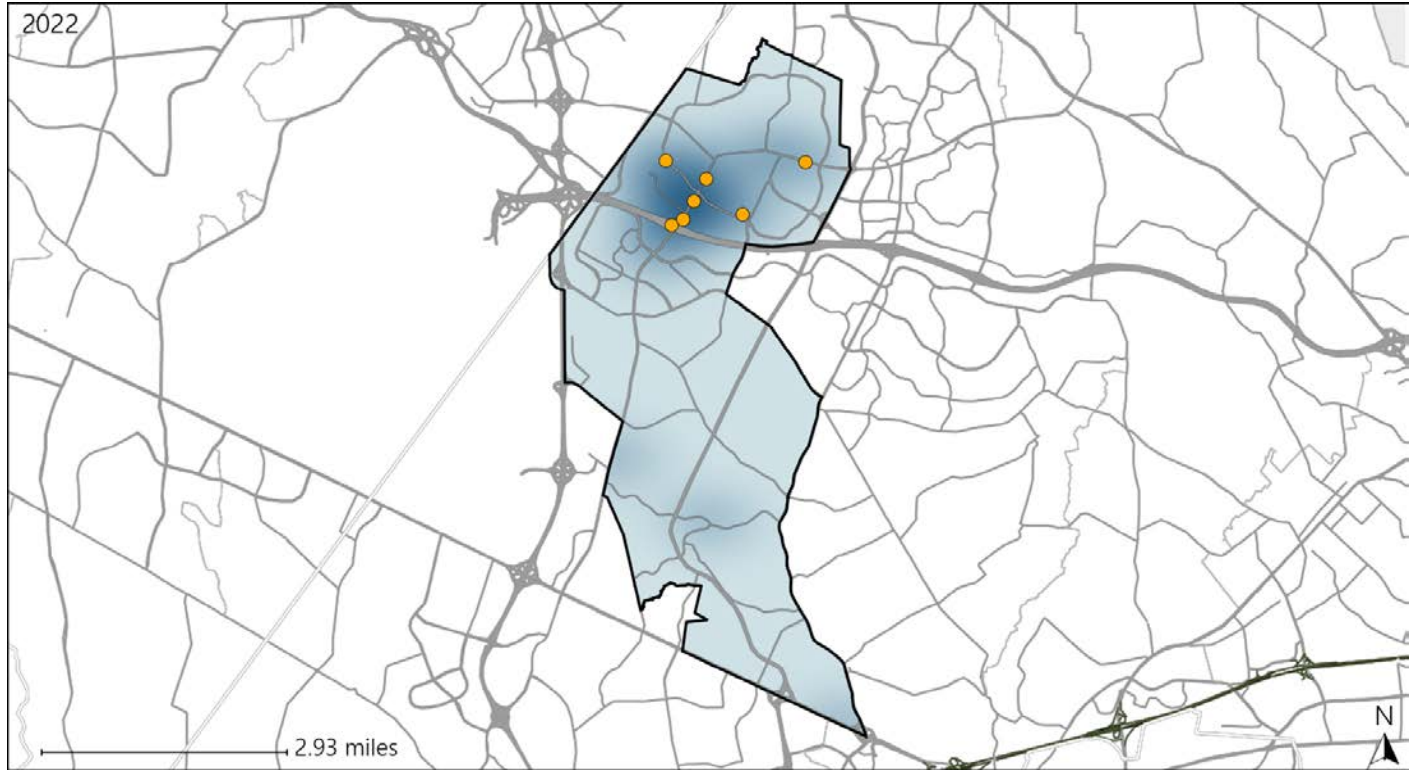
Available Crash Data - Calendar Year (CY)	CY 2019	CY 2020	CY 2021	CY 2022
<b>Total Crashes</b>	813	483	574	618
<b>Fatalities</b>	3	1	0	1
<b>Injuries</b>	703	422	439	506
<b>Unrestrained Fatalities</b>	1	1	0	0
<b>Percent of Unrestrained Fatalities to Total Fatalities</b>	33%	100%	0%	0%
<b>Unrestrained Injuries</b>	10	17	16	11
<b>Percent of Unrestrained Injuries to Total Injuries</b>	1%	4%	4%	2%



# Virginia House District 8 Pedestrian Crash Statistics

Report Generated May, 2023

	Count	Highest Time Period(s)	Highest Day(s)	Highest Month(s)
<b>Fatal Crashes</b>	<b>0</b>	-	-	-
<b>Pedestrian Fatalities</b>	<b>0</b>	-	-	-
<b>Serious Injury Crashes</b>	<b>7</b>	<b>3:00pm - 5:59pm</b> (57%)	<b>Sunday • Thursday</b> (58%)	<b>November • October</b> (58%)



### House District 8 Pedestrian-Related Crashes

- |                    |                        |
|--------------------|------------------------|
| Interstate Crashes | Non-interstate Crashes |
| Fatal              | Fatal                  |
| Serious Injury     | Serious Injury         |

The blue gradient represents the density of all pedestrian-related crashes.

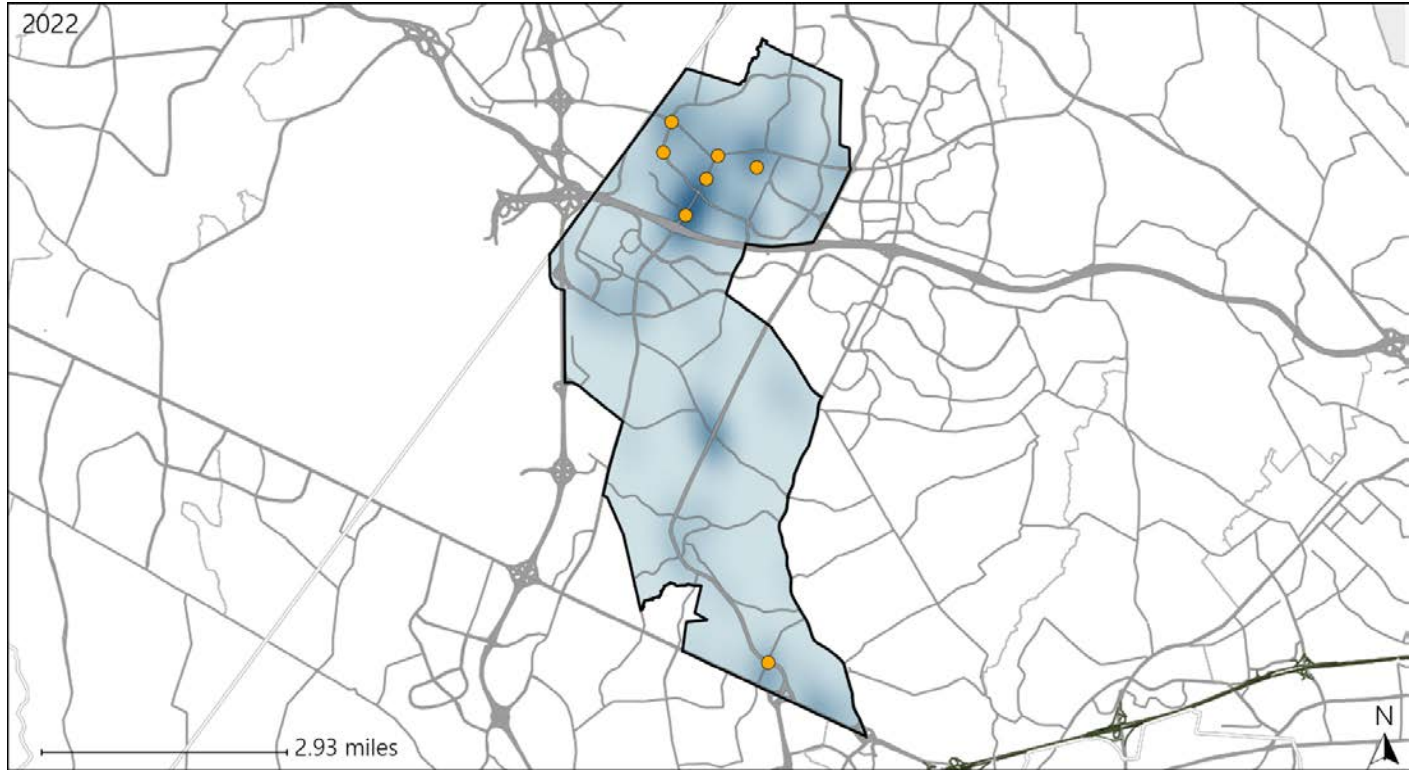


Available Crash Data - Calendar Year (CY)	CY 2019	CY 2020	CY 2021	CY 2022
Total Crashes	813	483	574	618
Fatal Crashes	3	1	0	1
Injury Crashes	382	236	255	297
Pedestrian-Related Fatal Crashes	1	0	0	0
Percent of Pedestrian-Related Fatal Crashes to Total Fatal Crashes	33%	0%	0%	0%
Pedestrian-Related Injury Crashes	12	11	13	13
Percent of Pedestrian-Related Injury Crashes to Total Injury Crashes	3%	5%	5%	4%

# Virginia House District 8 Distracted Driving Crash Statistics

Report Generated May, 2023

	Count	Highest Time Period(s)	Highest Day(s)	Highest Month(s)
<b>Fatal Crashes</b>	0	-	-	-
<b>Resulting Fatalities</b>	0	-	-	-
<b>Serious Injury Crashes</b>	7	3:00pm - 5:59pm (43%)	Friday • Wednesday (58%)	August • February (28%)



## House District 8 Distracted Driving-Related Crashes

- |  |  |
|--|--|
| Interstate Crashes                                   | Non-interstate Crashes                               |
| <span style="color: red;">●</span> Fatal             | <span style="color: red;">●</span> Fatal             |
| <span style="color: orange;">●</span> Serious Injury | <span style="color: orange;">●</span> Serious Injury |

The blue gradient represents the density of all distracted driving-related crashes.



Available Crash Data - Calendar Year (CY)	CY 2019	CY 2020	CY 2021	CY 2022
Total Crashes	813	483	574	618
Fatal Crashes	3	1	0	1
Injury Crashes	382	236	255	297
Distracted Driving-Related Fatal Crashes	0	0	0	0
Percent of Distracted Driving-Related Fatal Crashes to Total Fatal Crashes	0%	0%	0%	0%
Distracted Driving-Related Injury Crashes	87	63	80	72
Percent of Distracted Driving-Related Injury Crashes to Total Injury Crashes	23%	27%	31%	24%