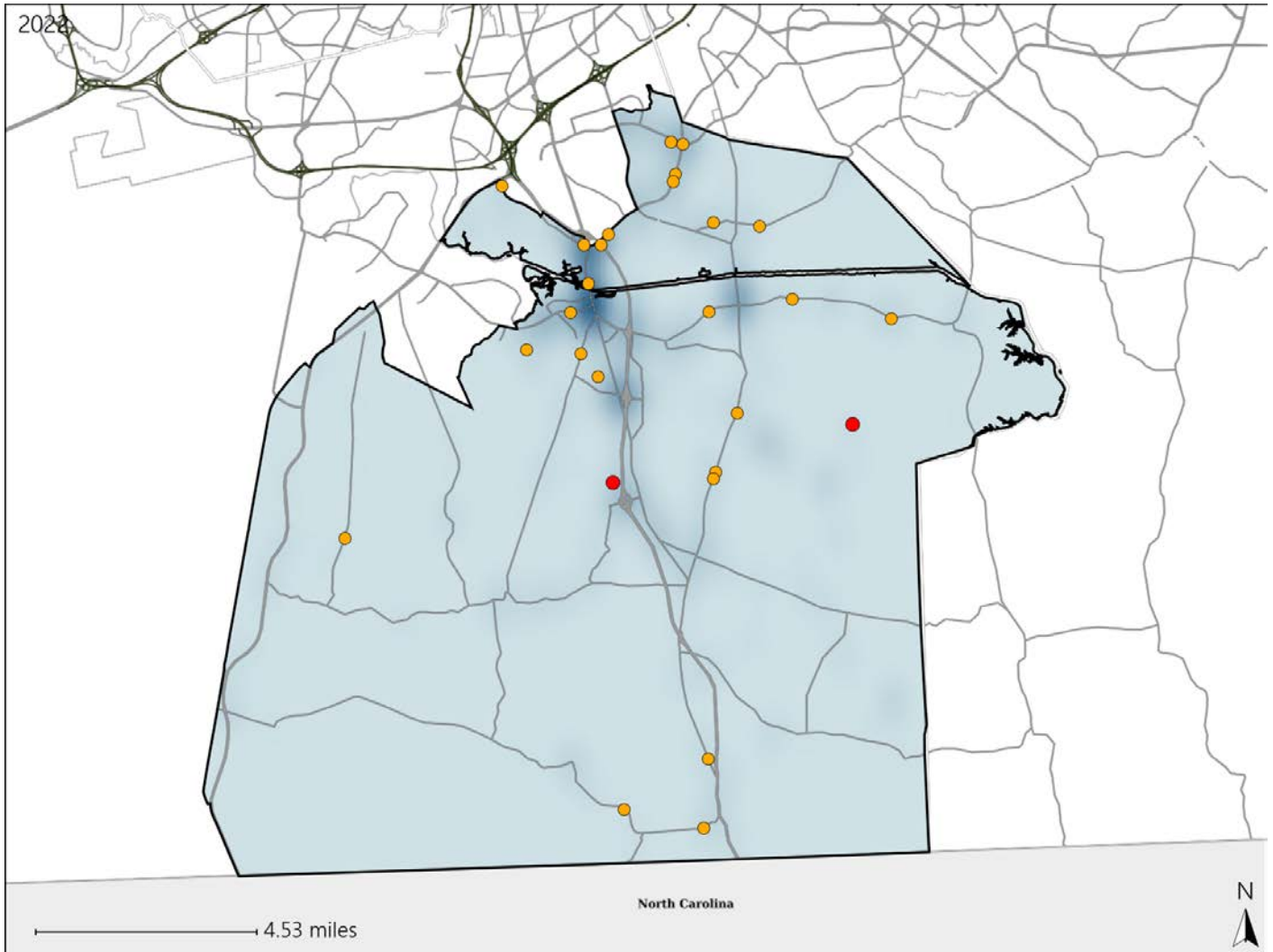


# Virginia House District 90 Crash Statistics

Report Generated May, 2023

	Count	Highest Time Period(s)	Highest Day(s)	Highest Month(s)
<b>Fatal Crashes</b>	<b>2</b>	<b>6:00pm - 8:59pm</b>	<b>Sunday • Thursday</b>	<b>July • October</b>
<b>Resulting Fatalities</b>	<b>2</b>	<b>Noon - 2:59pm</b> (100%)	<b>(100%)</b>	<b>(100%)</b>
<b>Serious Injury Crashes</b>	<b>25</b>	<b>6:00am - 8:59am</b> <b>9:00am - 11:59am</b> (40%)	<b>Thursday</b> (28%)	<b>April • January</b> (24%)



### House District 90 Crashes

Interstate Crashes

Non-interstate Crashes

● Fatal

● Fatal

⊕ Serious Injury

⊕ Serious Injury

The blue gradient represents the density of all crashes.

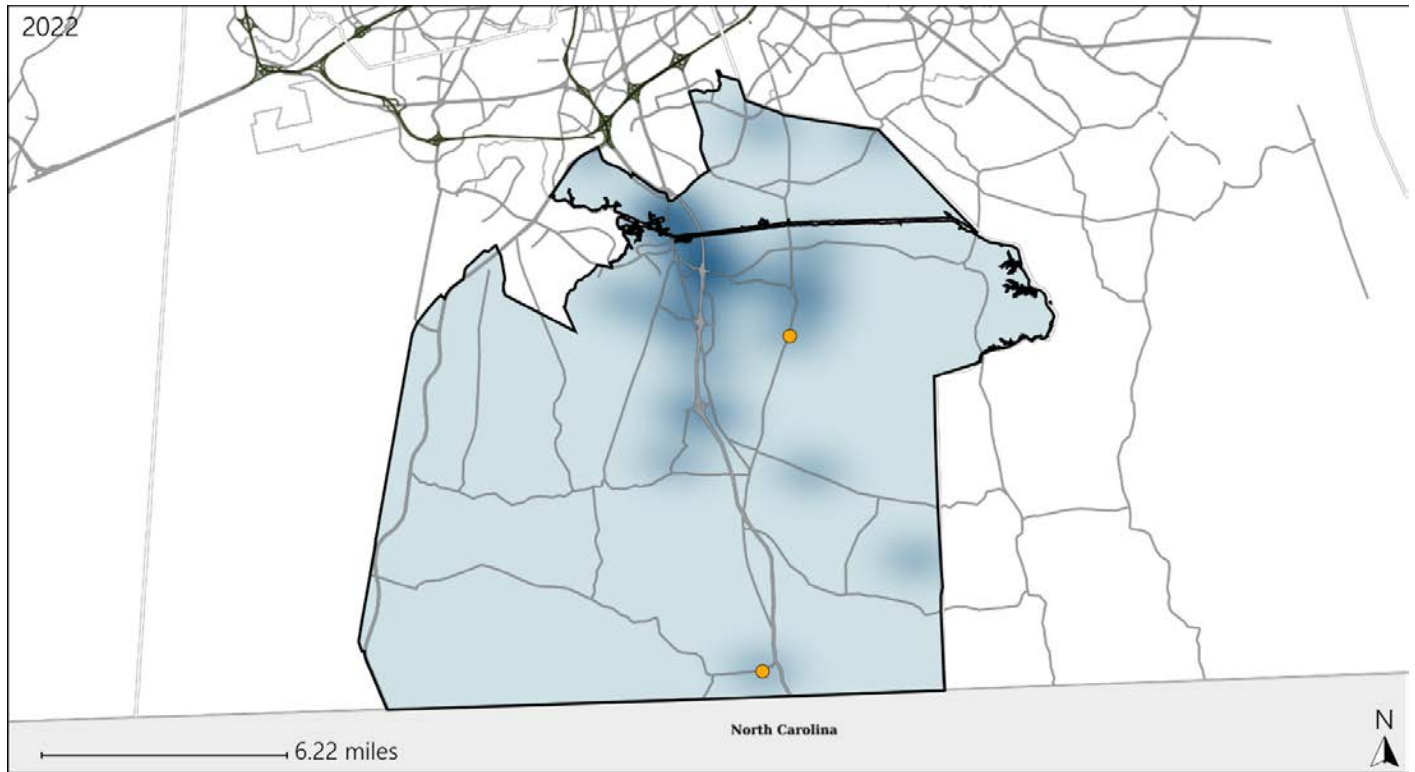


Available Crash Data - Calendar Year (CY)	CY 2019	CY 2020	CY 2021	CY 2022
Total Crashes	541	418	478	578
Fatal Crashes	2	1	4	2
Injury Crashes	240	155	186	234

# Virginia House District 90 Alcohol Crash Statistics

Report Generated May, 2023

	Count	Highest Time Period(s)	Highest Day(s)	Highest Month(s)
<b>Fatal Crashes</b>	0	-	-	-
<b>Resulting Fatalities</b>	0	-	-	-
<b>Serious Injury Crashes</b>	2	3:00am - 5:59am 9:00am - 11:59am (100%)	Saturday • Thursday (100%)	April • January (100%)



## House District 90 Alcohol-Related Crashes

Interstate Crashes                      Non-interstate Crashes  
 ● Fatal                                      ● Fatal  
 ⊕ Serious Injury                          ⊕ Serious Injury

The blue gradient represents the density of all alcohol-related crashes.

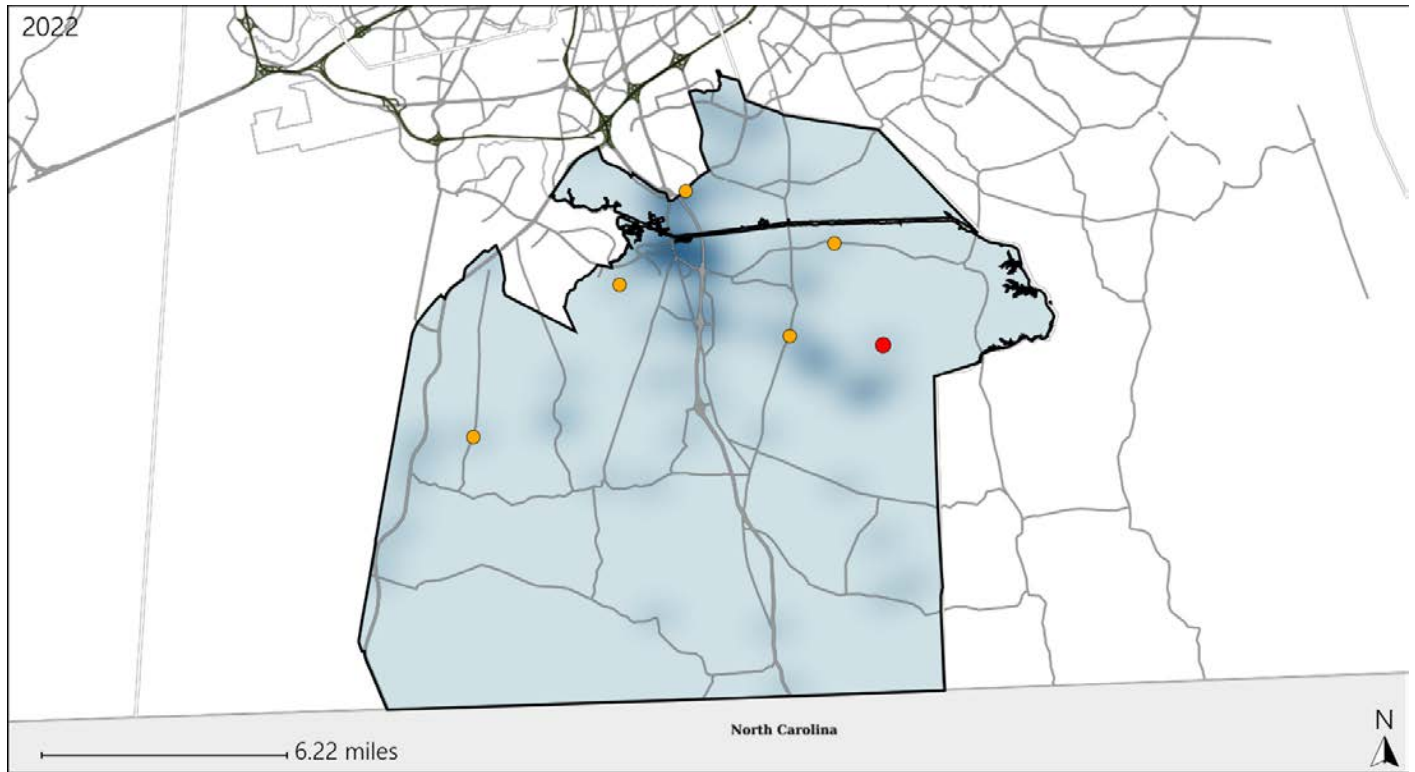


Available Crash Data - Calendar Year (CY)	CY 2019	CY 2020	CY 2021	CY 2022
Total Crashes	541	418	478	578
Fatal Crashes	2	1	4	2
Injury Crashes	240	155	186	234
Alcohol-Related Fatal Crashes	2	0	2	0
Percent of Alcohol-Related Fatal Crashes to Total Fatal Crashes	100%	0%	50%	0%
Alcohol-Related Injury Crashes	22	11	15	5
Percent of Alcohol-Related Injury Crashes to Total Injury Crashes	9%	7%	8%	2%

# Virginia House District 90 Speed Crash Statistics

Report Generated May, 2023

	Count	Highest Time Period(s)	Highest Day(s)	Highest Month(s)
<b>Fatal Crashes</b>	<b>1</b>	<b>6:00pm - 8:59pm</b>	<b>Sunday</b>	<b>October</b>
<b>Resulting Fatalities</b>	<b>1</b>	<b>(100%)</b>	<b>(100%)</b>	<b>(100%)</b>
<b>Serious Injury Crashes</b>	<b>5</b>	<b>3:00am - 5:59am</b> <b>3:00pm - 5:59pm</b>	<b>Thursday</b>	<b>October</b>
		<b>(40%)</b>	<b>(60%)</b>	<b>(40%)</b>



## House District 90 Speed-Related Crashes

Interstate Crashes

Non-interstate Crashes

- Fatal
- Serious Injury

- Fatal
- Serious Injury

The blue gradient represents the density of all speed-related crashes.

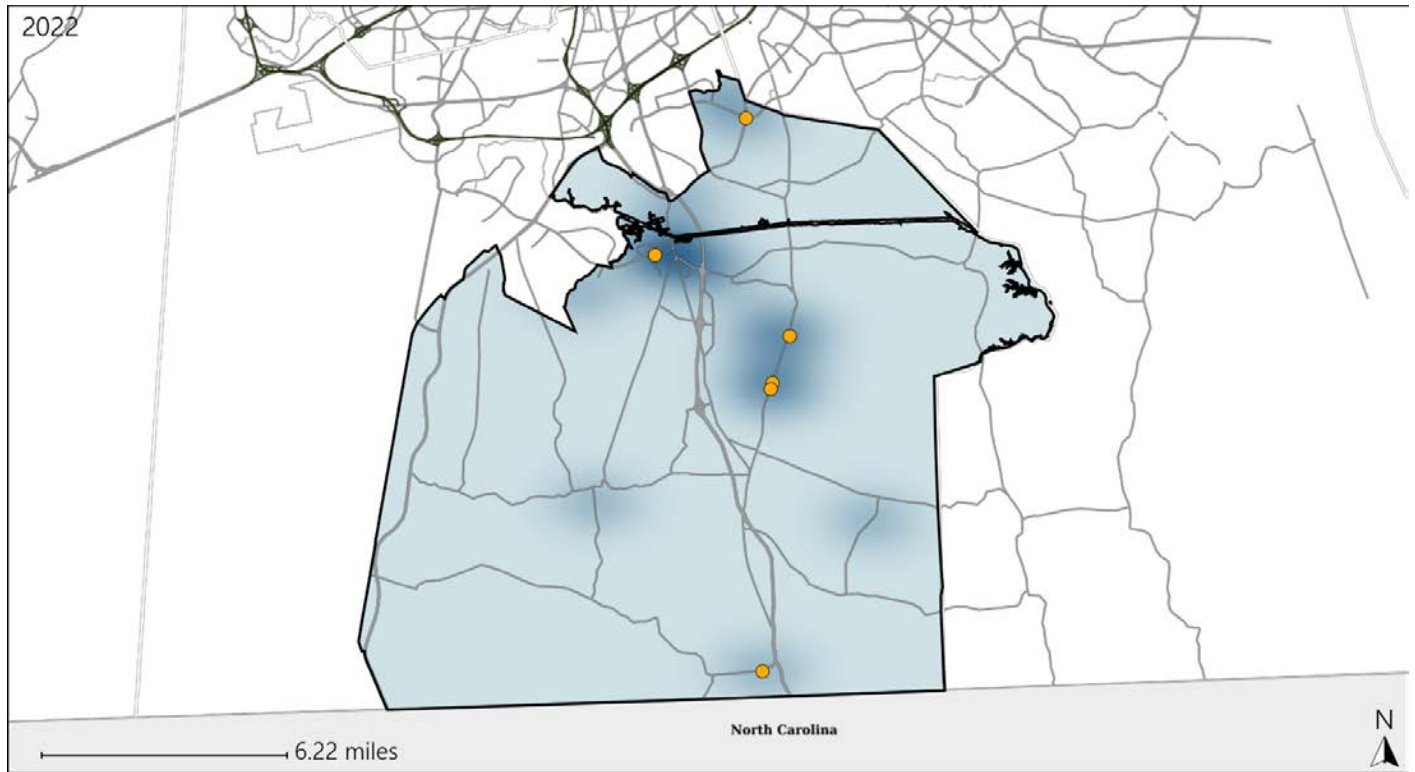


Available Crash Data - Calendar Year (CY)	CY 2019	CY 2020	CY 2021	CY 2022
Total Crashes	541	418	478	578
Fatal Crashes	2	1	4	2
Injury Crashes	240	155	186	234
Speed-Related Fatal Crashes	1	0	2	1
Percent of Speed-Related Fatal Crashes to Total Fatal Crashes	50%	0%	50%	50%
Speed-Related Injury Crashes	23	32	34	42
Percent of Speed-Related Injury Crashes to Total Injury Crashes	10%	21%	18%	18%

# Virginia House District 90 Unrestrained Crash Statistics

Report Generated May, 2023

	Count	Highest Time Period(s)	Highest Day(s)	Highest Month(s)
<b>Fatal Crashes</b>	<b>0</b>	-	-	-
<b>Unrestrained Fatalities</b>	<b>0</b>	-	-	-
<b>Serious Injury Crashes</b>	<b>6</b>	3:00am - 5:59am 6:00am - 8:59am (34%)	Saturday • Sunday (66%)	May (33%)



## House District 90 Unrestrained-Related Crashes

Interstate Crashes

Non-interstate Crashes

- Fatal
- ⊕ Serious Injury

- Fatal
- Serious Injury

The blue gradient represents the density of all unrestrained-related crashes.

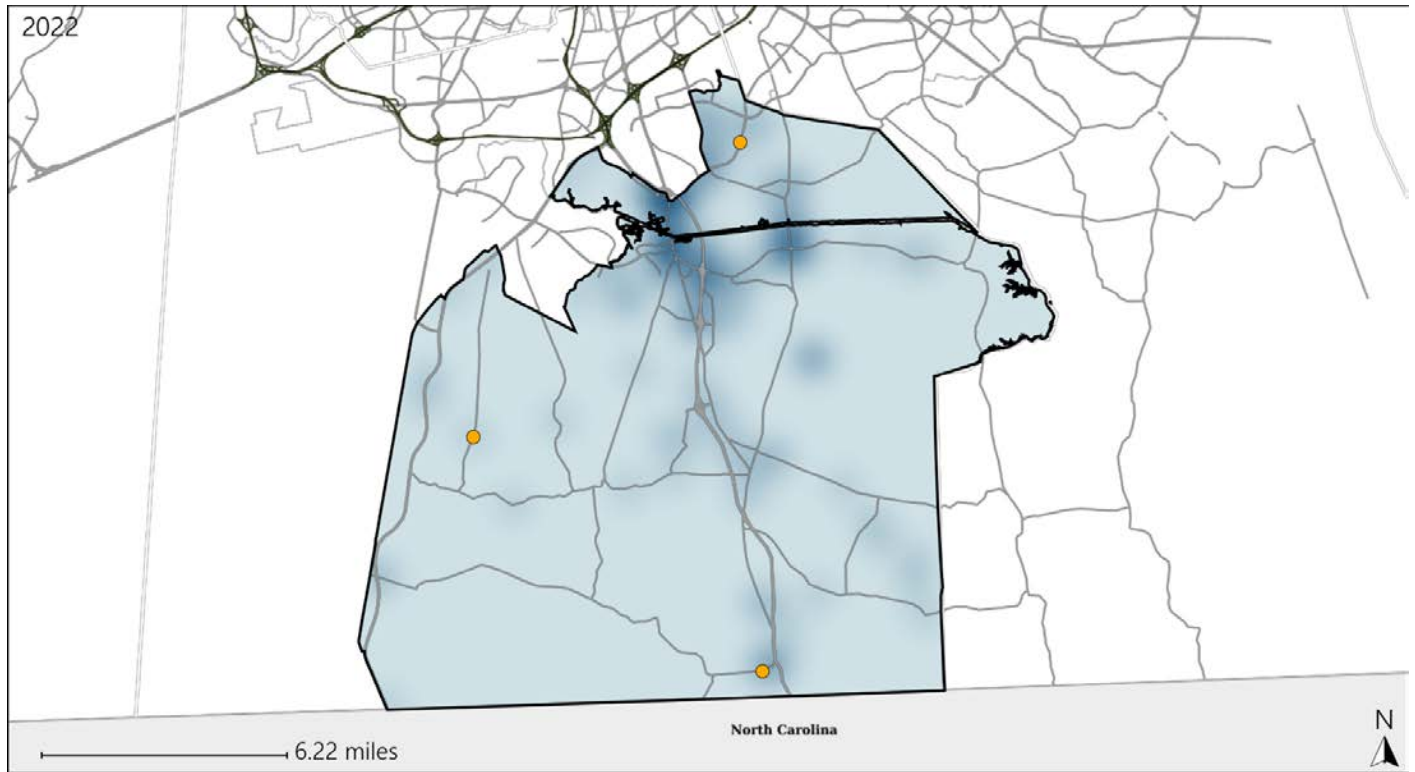


Available Crash Data - Calendar Year (CY)	CY 2019	CY 2020	CY 2021	CY 2022
<b>Total Crashes</b>	<b>541</b>	<b>418</b>	<b>478</b>	<b>578</b>
<b>Fatalities</b>	<b>2</b>	<b>1</b>	<b>4</b>	<b>2</b>
<b>Injuries</b>	<b>396</b>	<b>233</b>	<b>310</b>	<b>374</b>
<b>Unrestrained Fatalities</b>	<b>2</b>	<b>0</b>	<b>1</b>	<b>0</b>
<b>Percent of Unrestrained Fatalities to Total Fatalities</b>	<b>100%</b>	<b>0%</b>	<b>25%</b>	<b>0%</b>
<b>Unrestrained Injuries</b>	<b>7</b>	<b>17</b>	<b>10</b>	<b>15</b>
<b>Percent of Unrestrained Injuries to Total Injuries</b>	<b>2%</b>	<b>7%</b>	<b>3%</b>	<b>4%</b>

# Virginia House District 90 Distracted Driving Crash Statistics

Report Generated May, 2023

	Count	Highest Time Period(s)	Highest Day(s)	Highest Month(s)
<b>Fatal Crashes</b>	<b>0</b>	-	-	-
<b>Resulting Fatalities</b>	<b>0</b>	-	-	-
<b>Serious Injury Crashes</b>	<b>3</b>	6:00am - 8:59am 9:00am - 11:59am (66%)	Thursday (67%)	April • January (66%)



## House District 90 Distracted Driving-Related Crashes

- |                    |                        |
|--------------------|------------------------|
| Interstate Crashes | Non-interstate Crashes |
| ● Fatal            | ● Fatal                |
| ⊕ Serious Injury   | ● Serious Injury       |

The blue gradient represents the density of all distracted driving-related crashes.



Available Crash Data - Calendar Year (CY)	CY 2019	CY 2020	CY 2021	CY 2022
Total Crashes	541	418	478	578
Fatal Crashes	2	1	4	2
Injury Crashes	240	155	186	234
Distracted Driving-Related Fatal Crashes	1	0	0	0
Percent of Distracted Driving-Related Fatal Crashes to Total Fatal Crashes	50%	0%	0%	0%
Distracted Driving-Related Injury Crashes	52	39	45	43
Percent of Distracted Driving-Related Injury Crashes to Total Injury Crashes	22%	25%	24%	18%