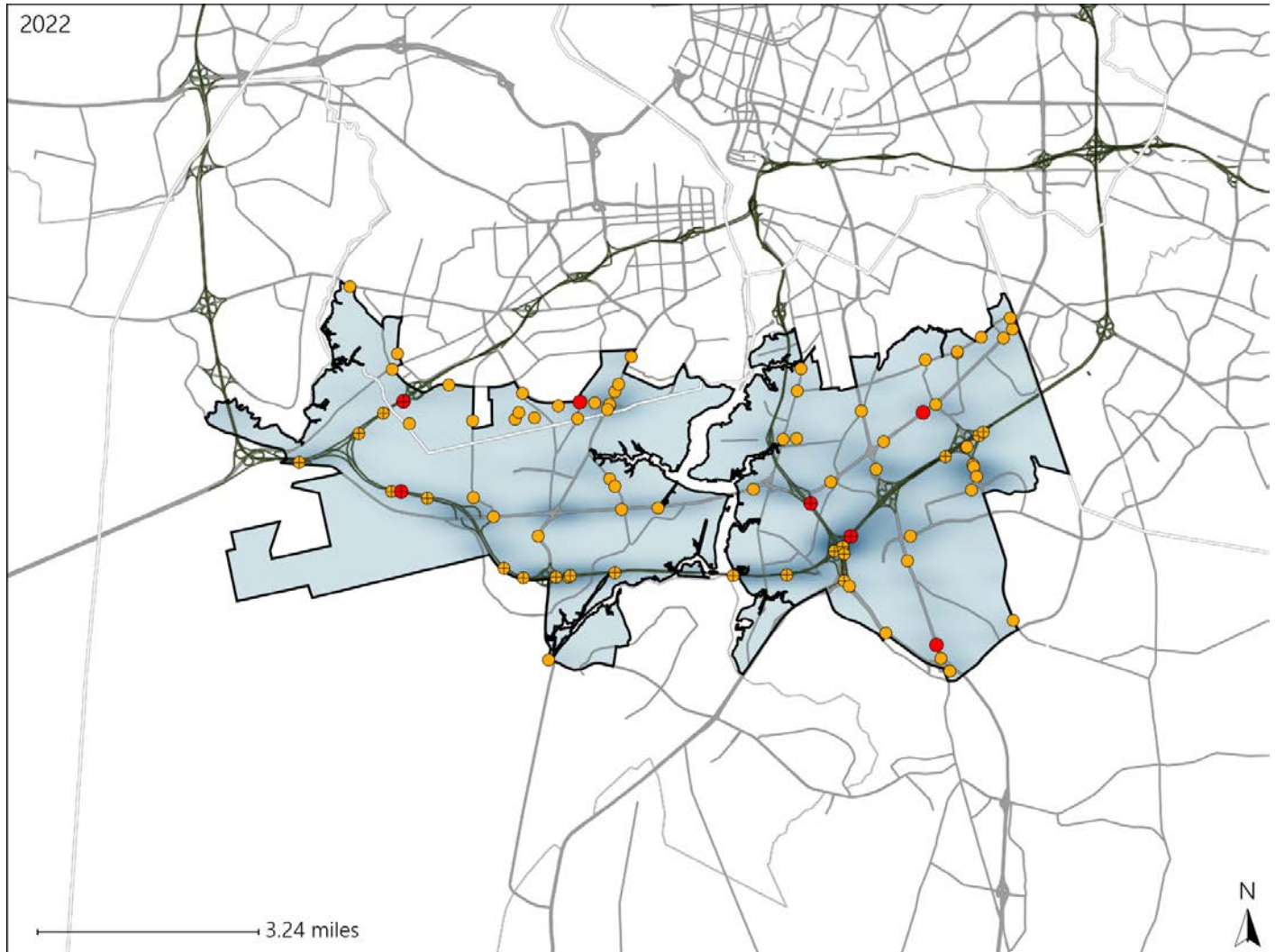


Virginia House District 91 Crash Statistics

Report Generated May, 2023

	Count	Highest Time Period(s)	Highest Day(s)	Highest Month(s)
Fatal Crashes	7	6:00am - 8:59am	Monday - Sunday	October
Resulting Fatalities	7	Noon - 2:59pm (58%)	(86%)	(29%)
Serious Injury Crashes	78	3:00pm - 5:59pm 9:00pm - 11:59pm (42%)	Friday (21%)	August (17%)



House District 91 Crashes

Interstate Crashes

- Fatal
- ⊕ Serious Injury

Non-interstate Crashes

- Fatal
- Serious Injury

The blue gradient represents the density of all crashes.

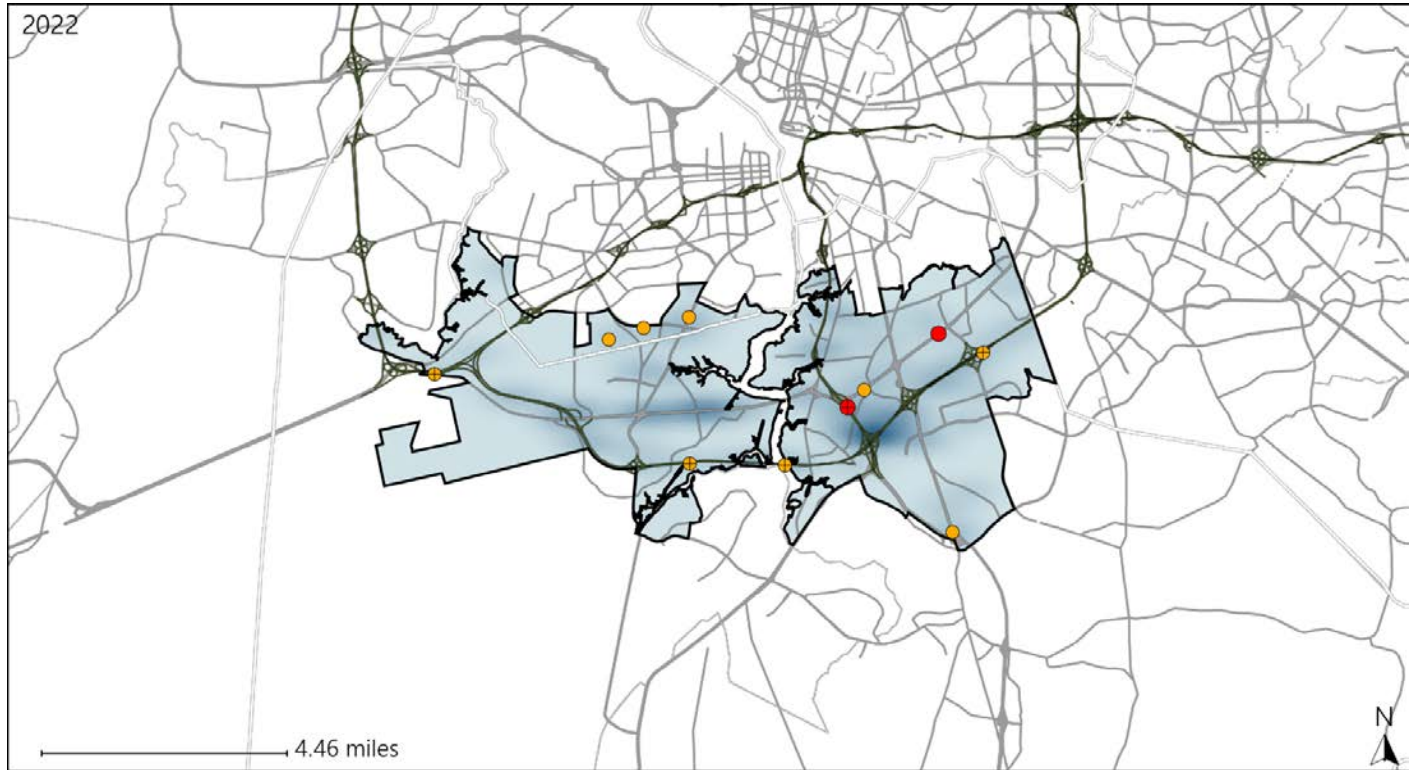


Available Crash Data - Calendar Year (CY)	CY 2019	CY 2020	CY 2021	CY 2022
Total Crashes	1588	1390	1530	1513
Fatal Crashes	8	6	13	7
Injury Crashes	654	564	554	570

Virginia House District 91 Alcohol Crash Statistics

Report Generated May, 2023

	Count	Highest Time Period(s)	Highest Day(s)	Highest Month(s)
Fatal Crashes	2	6:00am - 8:59am	Monday • Sunday	August • May
Resulting Fatalities	2	6:00pm - 8:59pm (100%)	(100%)	(100%)
Serious Injury Crashes	9	9:00pm - 11:59pm (33%)	Sunday • Tuesday (44%)	July (33%)



House District 91 Alcohol-Related Crashes

Interstate Crashes

Non-interstate Crashes

- Fatal
- Serious Injury

- Fatal
- Serious Injury

The blue gradient represents the density of all alcohol-related crashes.

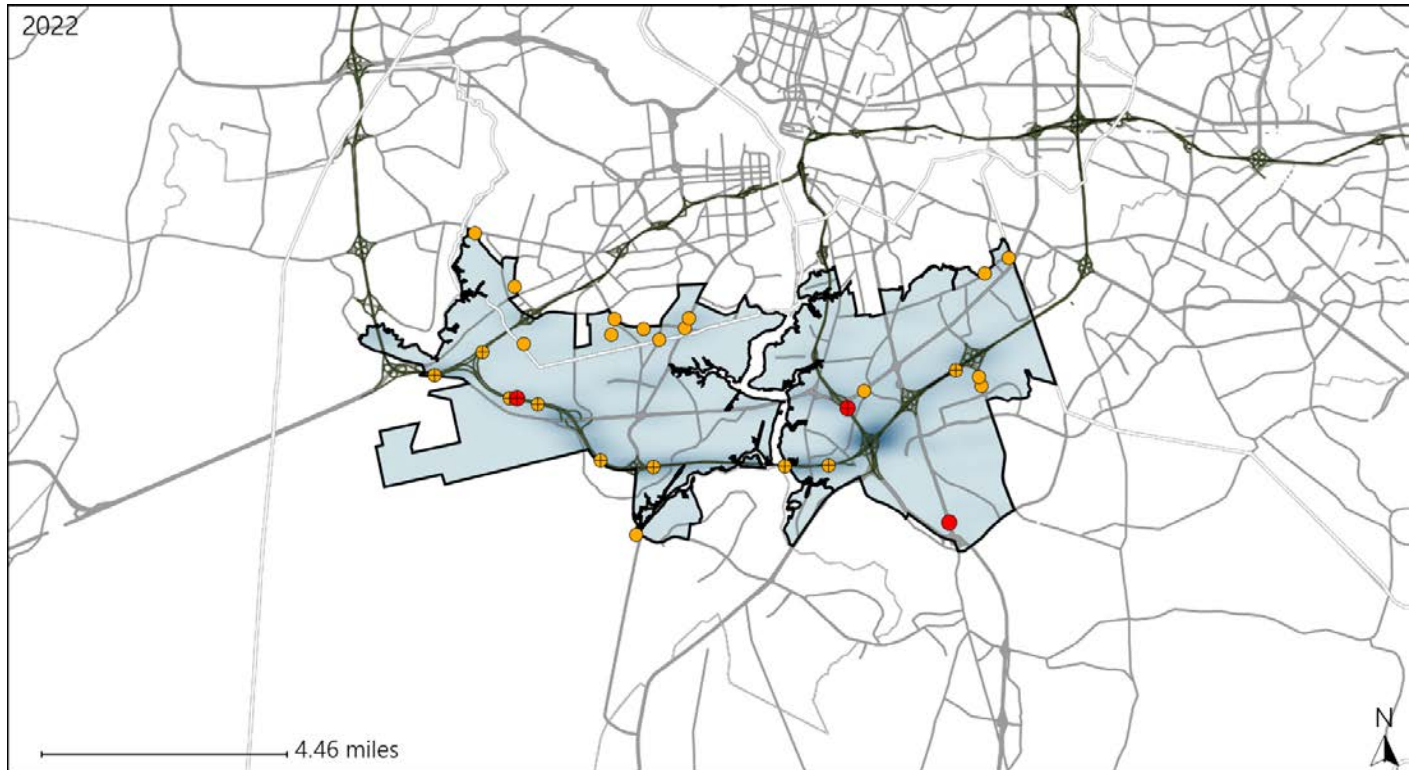


Available Crash Data - Calendar Year (CY)	CY 2019	CY 2020	CY 2021	CY 2022
Total Crashes	1588	1390	1530	1513
Fatal Crashes	8	6	13	7
Injury Crashes	654	564	554	570
Alcohol-Related Fatal Crashes	5	3	5	2
Percent of Alcohol-Related Fatal Crashes to Total Fatal Crashes	63%	50%	38%	29%
Alcohol-Related Injury Crashes	50	44	33	33
Percent of Alcohol-Related Injury Crashes to Total Injury Crashes	8%	8%	6%	6%

Virginia House District 91 Speed Crash Statistics

Report Generated May, 2023

	Count	Highest Time Period(s)	Highest Day(s)	Highest Month(s)
Fatal Crashes	3	6:00am - 8:59am	Monday	December - May
Resulting Fatalities	3	(67%)	(67%)	(66%)
Serious Injury Crashes	24	9:00pm - 11:59pm	Friday	April
		(25%)	(25%)	(21%)



House District 91 Speed-Related Crashes

Interstate Crashes Non-interstate Crashes
 ● Fatal ● Fatal
 ⊕ Serious Injury ⊕ Serious Injury

The blue gradient represents the density of all speed-related crashes.

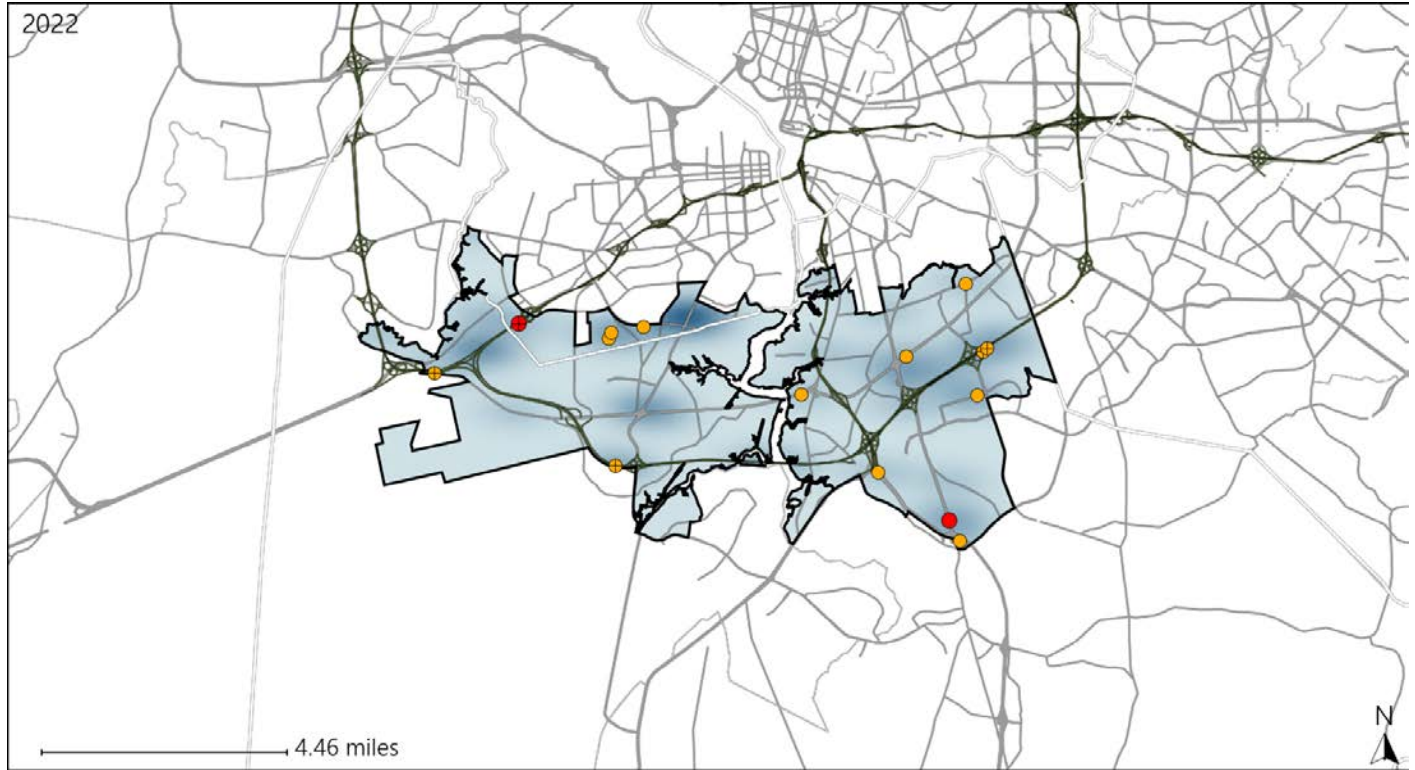


Available Crash Data - Calendar Year (CY)	CY 2019	CY 2020	CY 2021	CY 2022
Total Crashes	1588	1390	1530	1513
Fatal Crashes	8	6	13	7
Injury Crashes	654	564	554	570
Speed-Related Fatal Crashes	1	1	7	3
Percent of Speed-Related Fatal Crashes to Total Fatal Crashes	13%	17%	54%	43%
Speed-Related Injury Crashes	141	116	120	131
Percent of Speed-Related Injury Crashes to Total Injury Crashes	22%	21%	22%	23%

Virginia House District 91 Unrestrained Crash Statistics

Report Generated May, 2023

	Count	Highest Time Period(s)	Highest Day(s)	Highest Month(s)
Fatal Crashes	2	Noon - 2:59pm	Monday • Sunday	January • October
Unrestrained Fatalities	2	(100%)	(100%)	(100%)
Serious Injury Crashes	13	9:00pm - 11:59pm	Saturday • Sunday	April
		(31%)	(46%)	(23%)



House District 91 Unrestrained-Related Crashes

- | | |
|--------------------|------------------------|
| Interstate Crashes | Non-interstate Crashes |
| Fatal | Fatal |
| Serious Injury | Serious Injury |

The blue gradient represents the density of all unrestrained-related crashes.

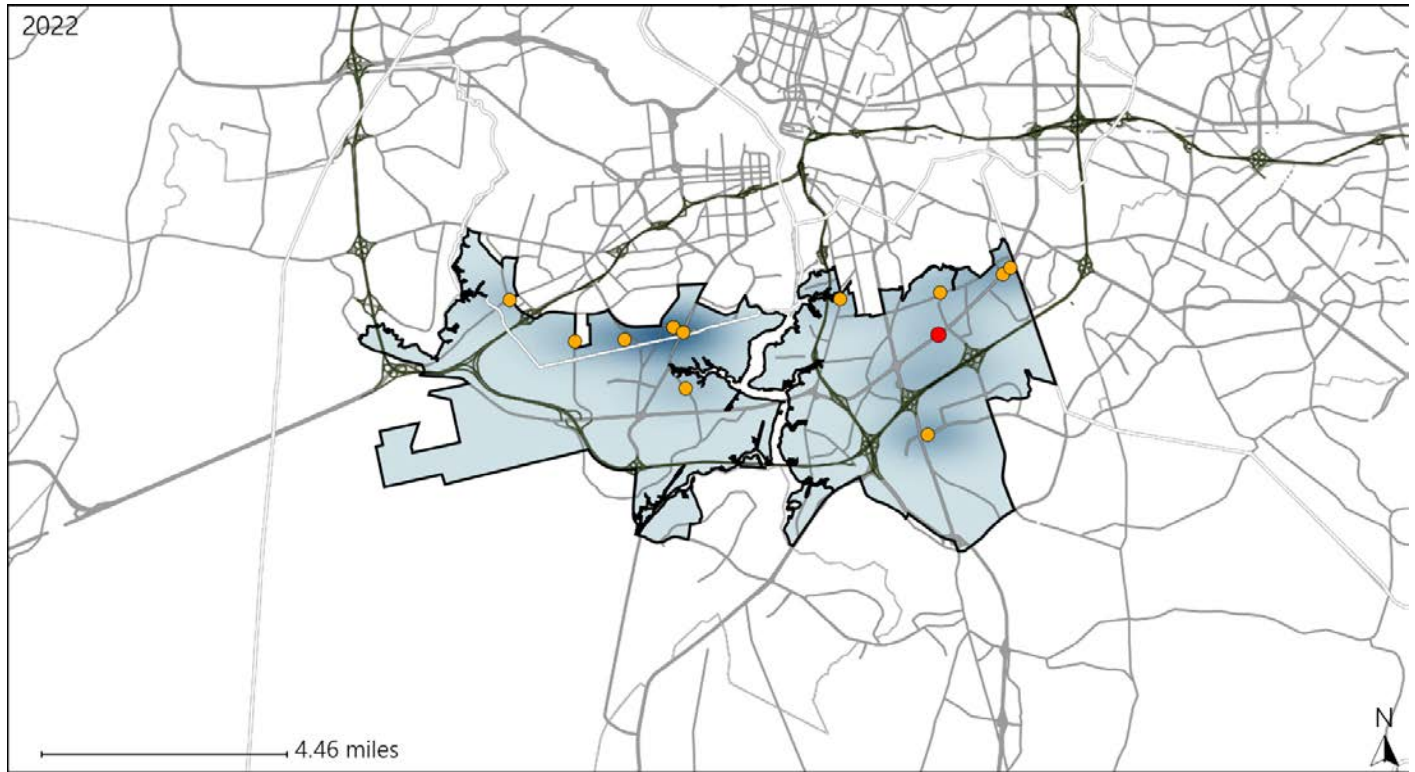


Available Crash Data - Calendar Year (CY)	CY 2019	CY 2020	CY 2021	CY 2022
Total Crashes	1588	1390	1530	1513
Fatalities	8	6	14	7
Injuries	1071	934	913	924
Unrestrained Fatalities	1	2	4	2
Percent of Unrestrained Fatalities to Total Fatalities	13%	33%	29%	29%
Unrestrained Injuries	45	46	41	44
Percent of Unrestrained Injuries to Total Injuries	4%	5%	4%	5%

Virginia House District 91 Pedestrian Crash Statistics

Report Generated May, 2023

	Count	Highest Time Period(s)	Highest Day(s)	Highest Month(s)
Fatal Crashes	1	6:00pm - 8:59pm	Sunday	August
Pedestrian Fatalities	1	(100%)	(100%)	(100%)
Serious Injury Crashes	11	3:00pm - 5:59pm	Monday • Thursday	April • August
		(36%)	(54%)	(36%)



House District 91 Pedestrian-Related Crashes

Interstate Crashes Non-interstate Crashes
 ● Fatal ● Fatal
 ⊕ Serious Injury ⊕ Serious Injury

The blue gradient represents the density of all pedestrian-related crashes.

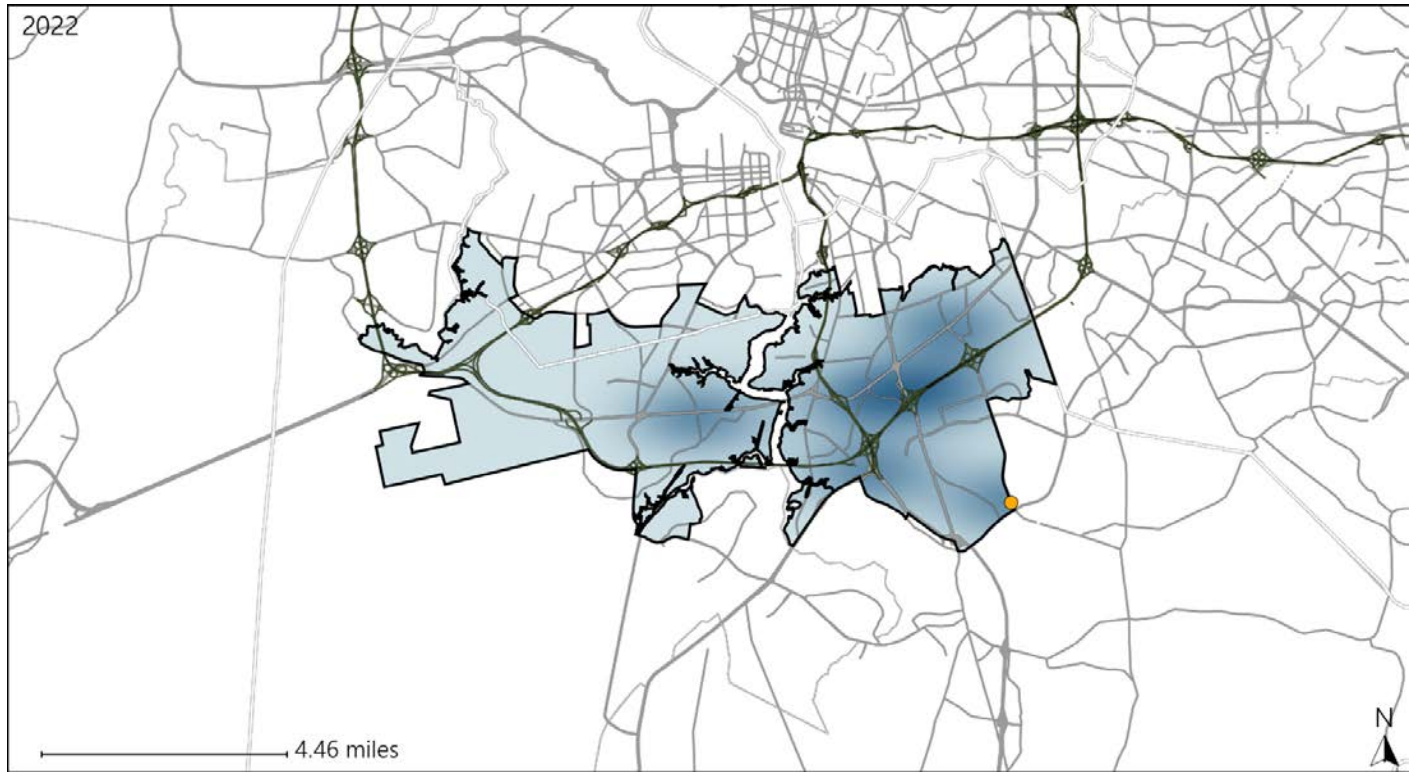


Available Crash Data - Calendar Year (CY)	CY 2019	CY 2020	CY 2021	CY 2022
Total Crashes	1588	1390	1530	1513
Fatal Crashes	8	6	13	7
Injury Crashes	654	564	554	570
Pedestrian-Related Fatal Crashes	3	2	2	1
Percent of Pedestrian-Related Fatal Crashes to Total Fatal Crashes	38%	33%	15%	14%
Pedestrian-Related Injury Crashes	20	15	13	16
Percent of Pedestrian-Related Injury Crashes to Total Injury Crashes	3%	3%	2%	3%

Virginia House District 91 Bicycle Crash Statistics

Report Generated May, 2023

	Count	Highest Time Period(s)	Highest Day(s)	Highest Month(s)
Fatal Crashes	0	-	-	-
Bicycle Fatalities	0	-	-	-
Serious Injury Crashes	1	9:00pm - 11:59pm (100%)	Sunday (100%)	January (100%)



House District 91 Bicycle-Related Crashes

Interstate Crashes Non-interstate Crashes
 ● Fatal ● Fatal
 ● Serious Injury ● Serious Injury

The blue gradient represents the density of all bicycle-related crashes.

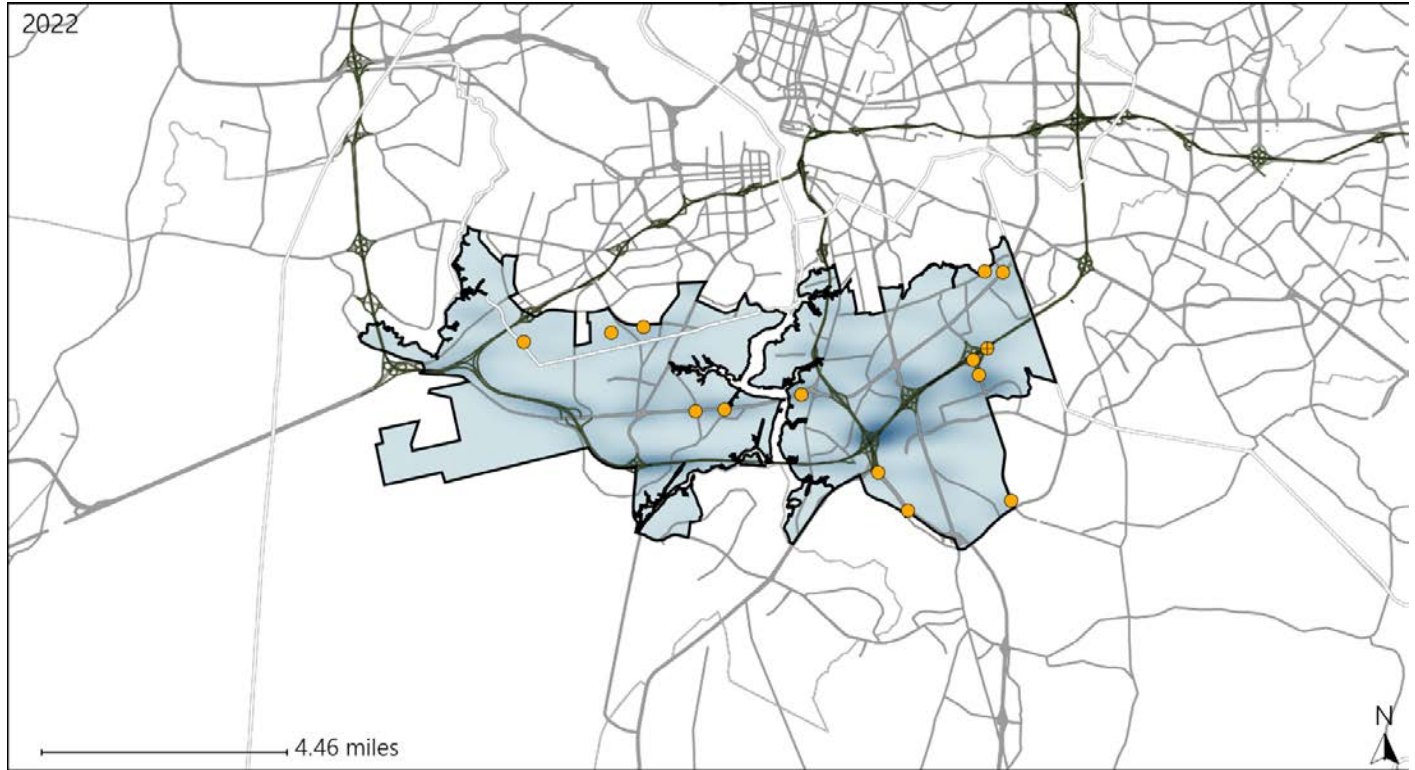


Available Crash Data - Calendar Year (CY)	CY 2019	CY 2020	CY 2021	CY 2022
Total Crashes	1588	1390	1530	1513
Fatal Crashes	8	6	13	7
Injury Crashes	654	564	554	570
Bicycle-Related Fatal Crashes	1	1	1	0
Percent of Bicycle-Related Fatal Crashes to Total Fatal Crashes	13%	17%	8%	0%
Bicycle-Related Injury Crashes	6	6	3	6
Percent of Bicycle-Related Injury Crashes to Total Injury Crashes	1%	1%	1%	1%

Virginia House District 91 Distracted Driving Crash Statistics

Report Generated May, 2023

	Count	Highest Time Period(s)	Highest Day(s)	Highest Month(s)
Fatal Crashes	0	-	-	-
Resulting Fatalities	0	-	-	-
Serious Injury Crashes	14	9:00pm - 11:59pm (43%)	Friday (29%)	April (29%)



House District 91 Distracted Driving-Related Crashes

- | | |
|--------------------|------------------------|
| Interstate Crashes | Non-interstate Crashes |
| ● Fatal | ● Fatal |
| ● Serious Injury | ● Serious Injury |

The blue gradient represents the density of all distracted driving-related crashes.



Available Crash Data - Calendar Year (CY)	CY 2019	CY 2020	CY 2021	CY 2022
Total Crashes	1588	1390	1530	1513
Fatal Crashes	8	6	13	7
Injury Crashes	654	564	554	570
Distracted Driving-Related Fatal Crashes	0	2	2	0
Percent of Distracted Driving-Related Fatal Crashes to Total Fatal Crashes	0%	33%	15%	0%
Distracted Driving-Related Injury Crashes	109	92	88	92
Percent of Distracted Driving-Related Injury Crashes to Total Injury Crashes	17%	16%	16%	16%