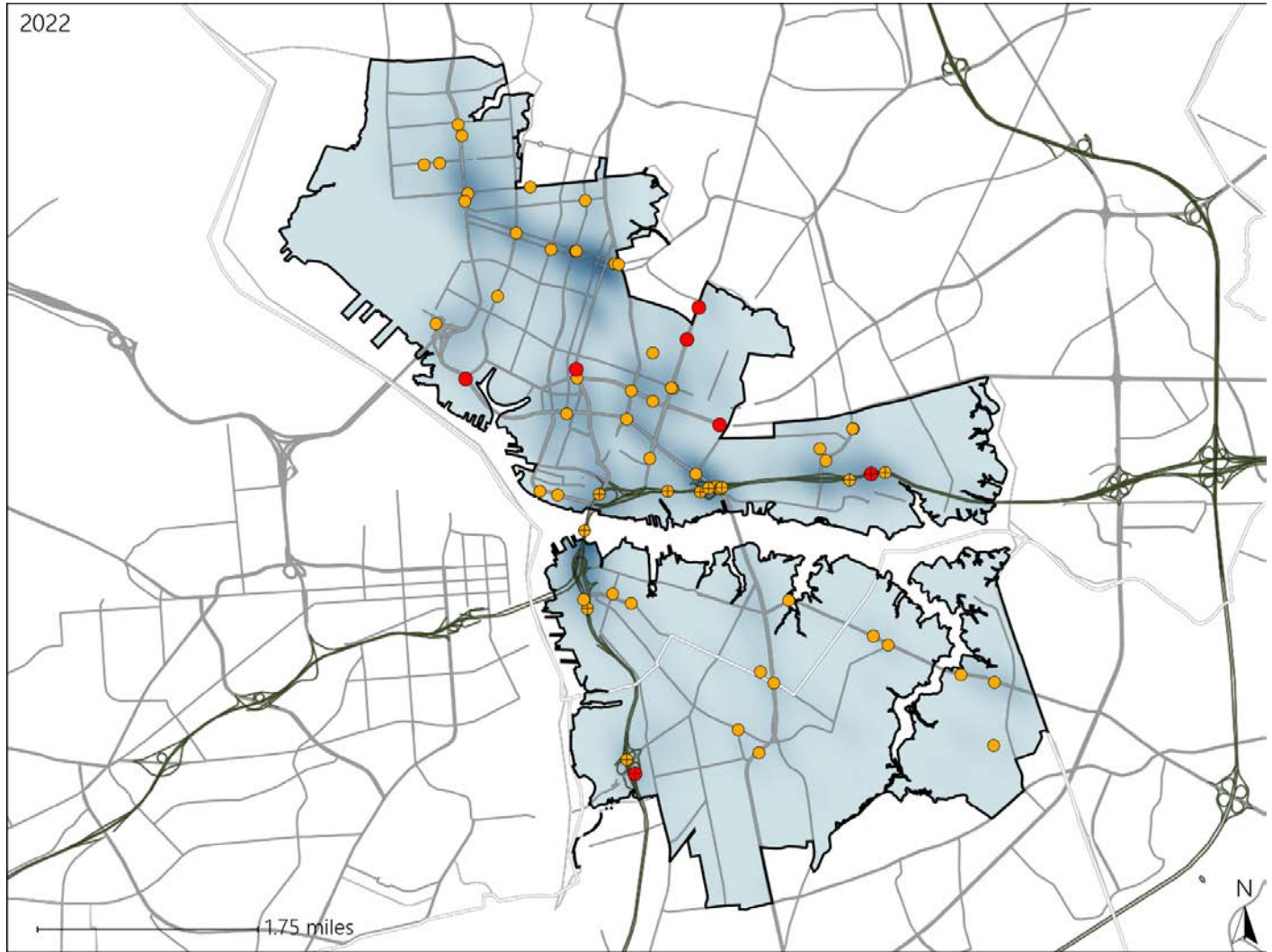


Virginia House District 92 Crash Statistics

Report Generated May, 2023

	Count	Highest Time Period(s)	Highest Day(s)	Highest Month(s)
Fatal Crashes	7	6:00pm - 8:59pm	Friday • Saturday	August • February
Resulting Fatalities	7	Midnight - 2:59am (58%)	(58%)	(58%)
Serious Injury Crashes	58	9:00am - 11:59am (21%)	Friday (21%)	March (14%)



House District 92 Crashes

Interstate Crashes

- Fatal
- Serious Injury

Non-interstate Crashes

- Fatal
- Serious Injury

The blue gradient represents the density of all crashes.

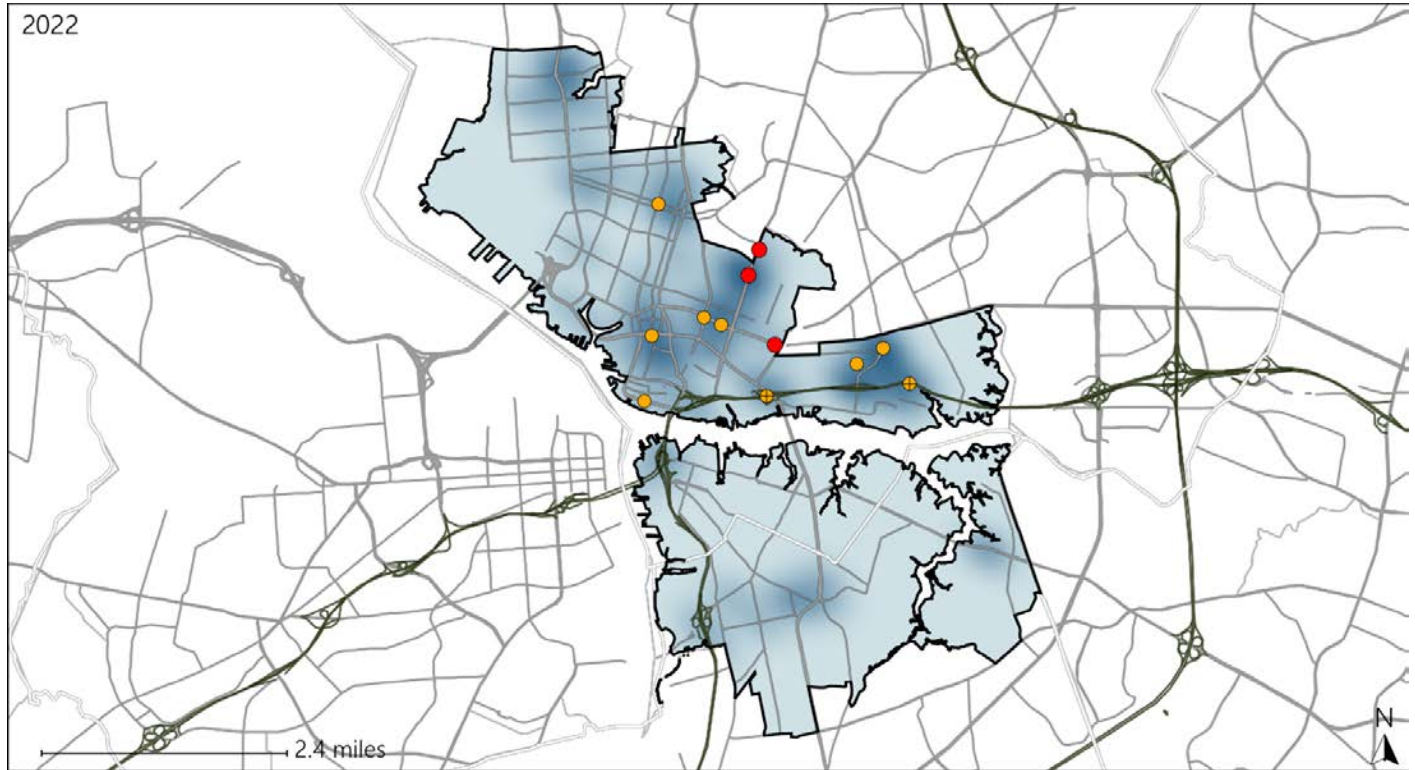


Available Crash Data - Calendar Year (CY)	CY 2019	CY 2020	CY 2021	CY 2022
Total Crashes	1368	1305	1383	1314
Fatal Crashes	12	5	4	7
Injury Crashes	495	482	482	458

Virginia House District 92 Alcohol Crash Statistics

Report Generated May, 2023

	Count	Highest Time Period(s)	Highest Day(s)	Highest Month(s)
Fatal Crashes	3	3:00am - 5:59am	Friday	December • February
Resulting Fatalities	3	6:00pm - 8:59pm (66%)	(67%)	(66%)
Serious Injury Crashes	10	9:00pm - 11:59pm (30%)	Saturday (50%)	April • August (40%)



House District 92 Alcohol-Related Crashes

Interstate Crashes

Non-interstate Crashes

- Fatal
- Serious Injury

- Fatal
- Serious Injury

The blue gradient represents the density of all alcohol-related crashes.

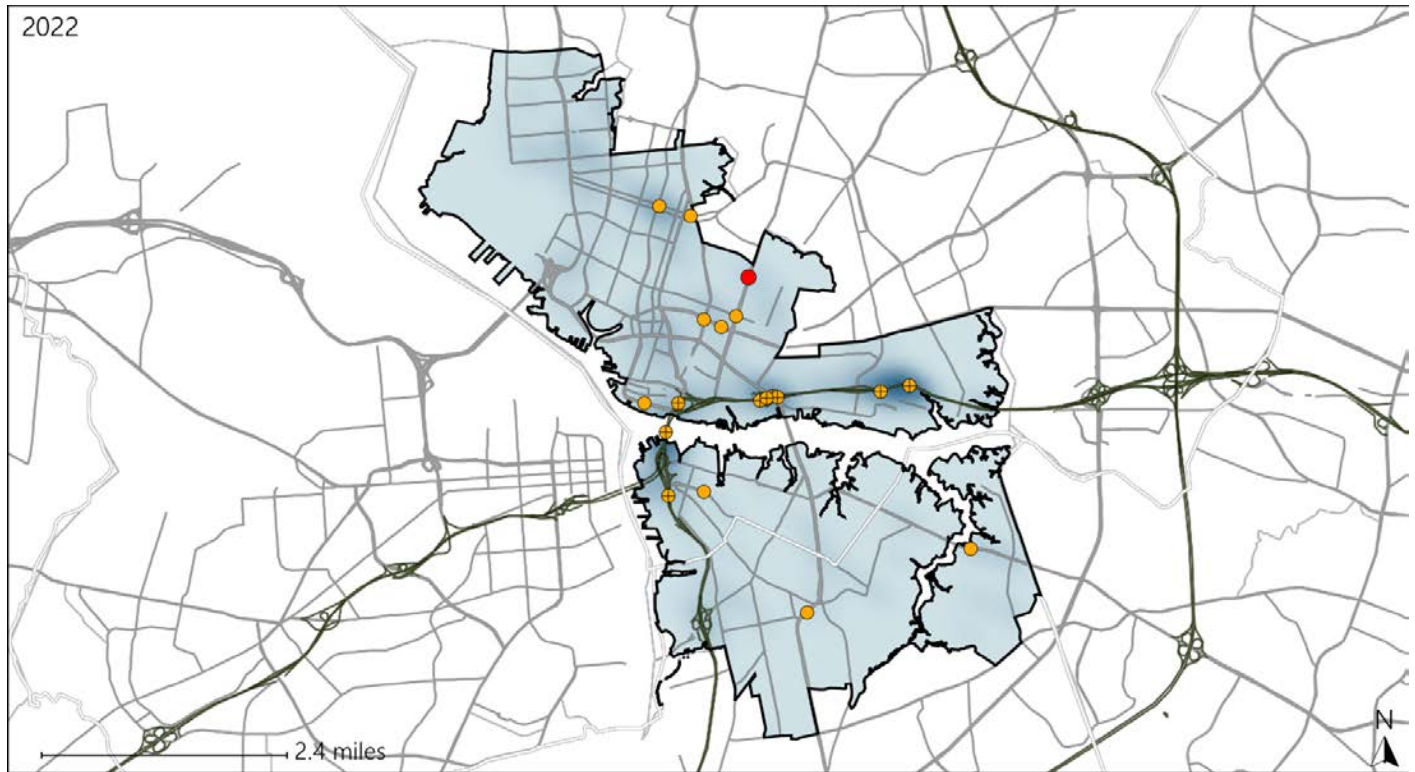


Available Crash Data - Calendar Year (CY)	CY 2019	CY 2020	CY 2021	CY 2022
Total Crashes	1368	1305	1383	1314
Fatal Crashes	12	5	4	7
Injury Crashes	495	482	482	458
Alcohol-Related Fatal Crashes	4	0	2	3
Percent of Alcohol-Related Fatal Crashes to Total Fatal Crashes	33%	0%	50%	43%
Alcohol-Related Injury Crashes	23	25	26	39
Percent of Alcohol-Related Injury Crashes to Total Injury Crashes	5%	5%	5%	9%

Virginia House District 92 Speed Crash Statistics

Report Generated May, 2023

	Count	Highest Time Period(s)	Highest Day(s)	Highest Month(s)
Fatal Crashes	1	3:00am - 5:59am	Friday	February
Resulting Fatalities	1	(100%)	(100%)	(100%)
Serious Injury Crashes	18	3:00pm - 5:59pm 9:00am - 11:59am	Tuesday	June • October
		(44%)	(22%)	(34%)



House District 92 Speed-Related Crashes

Interstate Crashes Non-interstate Crashes
 ● Fatal ● Fatal
 ⊕ Serious Injury ⊕ Serious Injury

The blue gradient represents the density of all speed-related crashes.

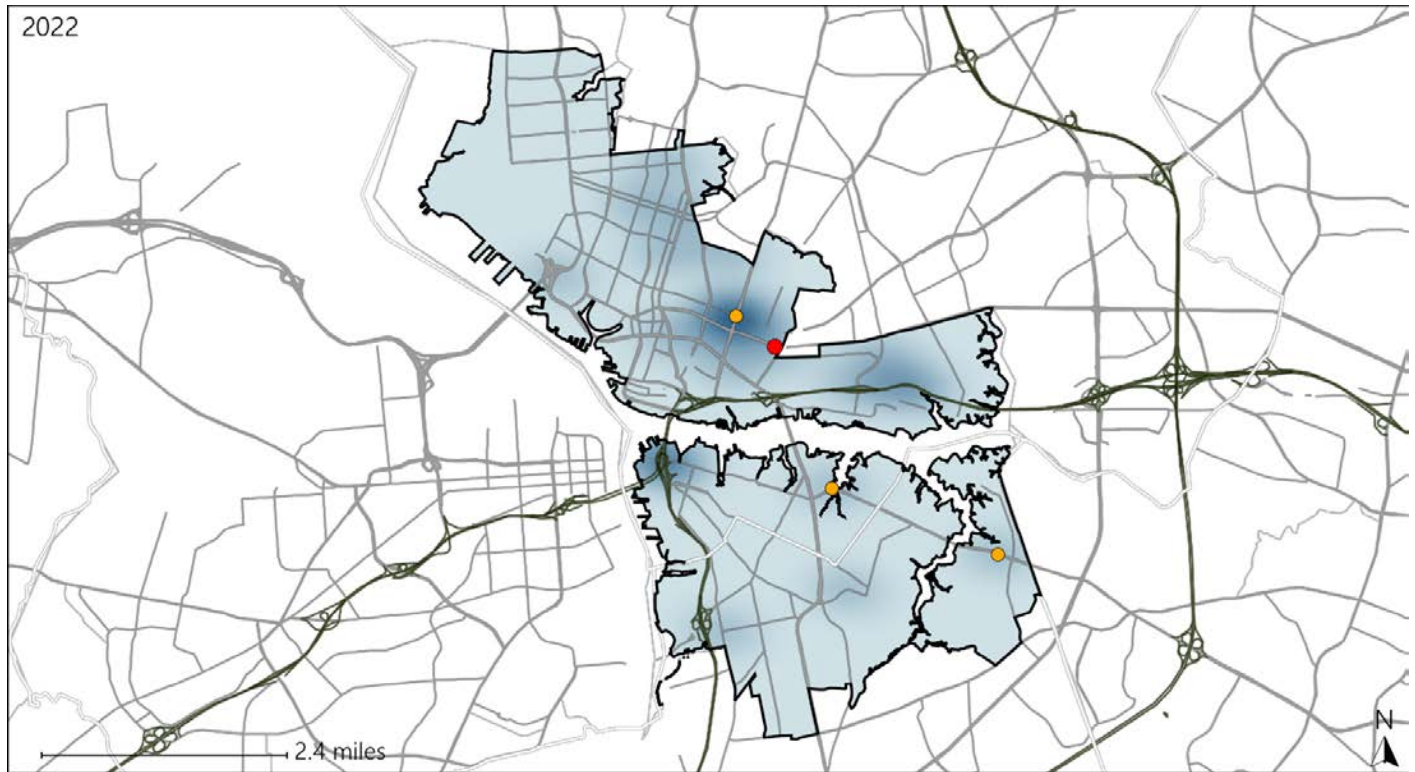


Available Crash Data - Calendar Year (CY)	CY 2019	CY 2020	CY 2021	CY 2022
Total Crashes	1368	1305	1383	1314
Fatal Crashes	12	5	4	7
Injury Crashes	495	482	482	458
Speed-Related Fatal Crashes	4	1	2	1
Percent of Speed-Related Fatal Crashes to Total Fatal Crashes	33%	20%	50%	14%
Speed-Related Injury Crashes	99	120	108	111
Percent of Speed-Related Injury Crashes to Total Injury Crashes	20%	25%	22%	24%

Virginia House District 92 Unrestrained Crash Statistics

Report Generated May, 2023

	Count	Highest Time Period(s)	Highest Day(s)	Highest Month(s)
Fatal Crashes	1	Midnight - 2:59am	Saturday	December
Unrestrained Fatalities	1	(100%)	(100%)	(100%)
Serious Injury Crashes	3	6:00am - 8:59am 6:00pm - 8:59pm	Friday	January • March
		(66%)	(67%)	(66%)



House District 92 Unrestrained-Related Crashes

- | | |
|--------------------|------------------------|
| Interstate Crashes | Non-interstate Crashes |
| ● Fatal | ● Fatal |
| ⊕ Serious Injury | ⊕ Serious Injury |

The blue gradient represents the density of all unrestrained-related crashes.

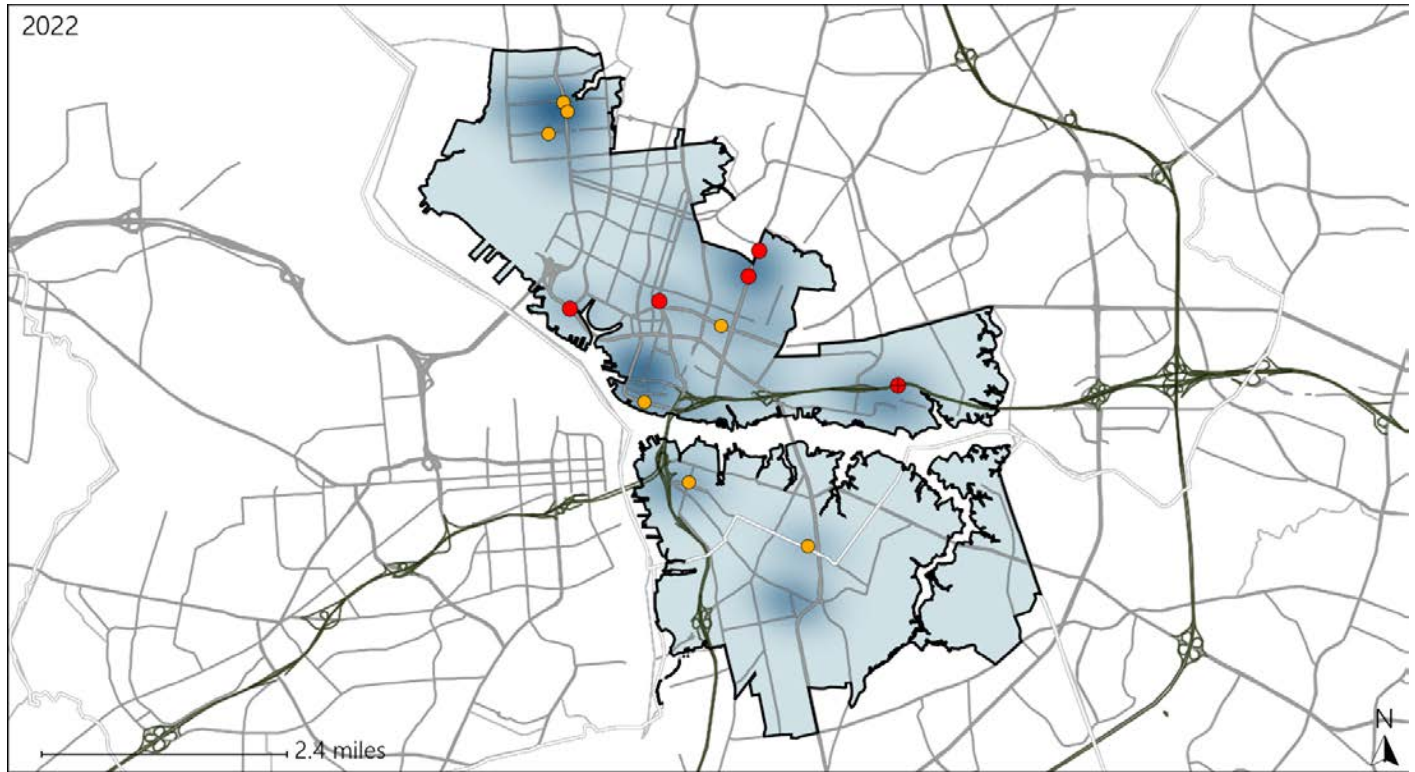


Available Crash Data - Calendar Year (CY)	CY 2019	CY 2020	CY 2021	CY 2022
Total Crashes	1368	1305	1383	1314
Fatalities	12	5	4	7
Injuries	772	744	737	705
Unrestrained Fatalities	5	1	2	1
Percent of Unrestrained Fatalities to Total Fatalities	42%	20%	50%	14%
Unrestrained Injuries	44	30	33	30
Percent of Unrestrained Injuries to Total Injuries	6%	4%	4%	4%

Virginia House District 92 Pedestrian Crash Statistics

Report Generated May, 2023

	Count	Highest Time Period(s)	Highest Day(s)	Highest Month(s)
Fatal Crashes	5	6:00pm - 8:59pm	Friday	February
Pedestrian Fatalities	5	(40%)	(40%)	(40%)
Serious Injury Crashes	8	9:00am - 11:59am	Saturday • Wednesday	October
		(38%)	(76%)	(38%)



House District 92 Pedestrian-Related Crashes

Interstate Crashes

Non-interstate Crashes

- Fatal
- Serious Injury

- Fatal
- Serious Injury

The blue gradient represents the density of all pedestrian-related crashes.

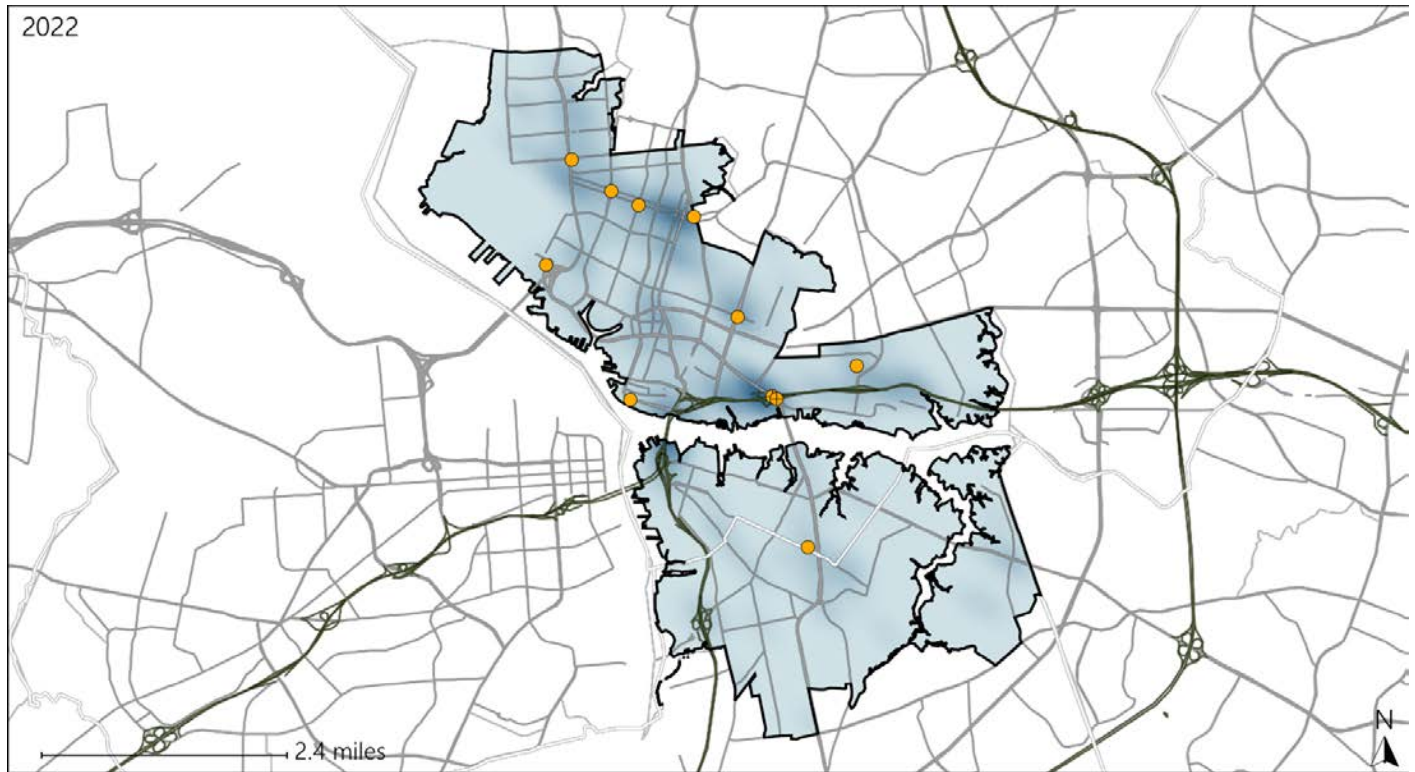


Available Crash Data - Calendar Year (CY)	CY 2019	CY 2020	CY 2021	CY 2022
Total Crashes	1368	1305	1383	1314
Fatal Crashes	12	5	4	7
Injury Crashes	495	482	482	458
Pedestrian-Related Fatal Crashes	3	0	0	5
Percent of Pedestrian-Related Fatal Crashes to Total Fatal Crashes	25%	0%	0%	71%
Pedestrian-Related Injury Crashes	33	29	27	23
Percent of Pedestrian-Related Injury Crashes to Total Injury Crashes	7%	6%	6%	5%

Virginia House District 92 Distracted Driving Crash Statistics

Report Generated May, 2023

	Count	Highest Time Period(s)	Highest Day(s)	Highest Month(s)
Fatal Crashes	0	-	-	-
Resulting Fatalities	0	-	-	-
Serious Injury Crashes	11	9:00pm - 11:59pm Midnight - 2:59am (54%)	Saturday (27%)	March (27%)



House District 92 Distracted Driving-Related Crashes

- | | |
|--------------------|------------------------|
| Interstate Crashes | Non-interstate Crashes |
| ● Fatal | ● Fatal |
| ⊕ Serious Injury | ● Serious Injury |

The blue gradient represents the density of all distracted driving-related crashes.



Available Crash Data - Calendar Year (CY)	CY 2019	CY 2020	CY 2021	CY 2022
Total Crashes	1368	1305	1383	1314
Fatal Crashes	12	5	4	7
Injury Crashes	495	482	482	458
Distracted Driving-Related Fatal Crashes	0	1	0	0
Percent of Distracted Driving-Related Fatal Crashes to Total Fatal Crashes	0%	20%	0%	0%
Distracted Driving-Related Injury Crashes	84	66	57	88
Percent of Distracted Driving-Related Injury Crashes to Total Injury Crashes	17%	14%	12%	19%