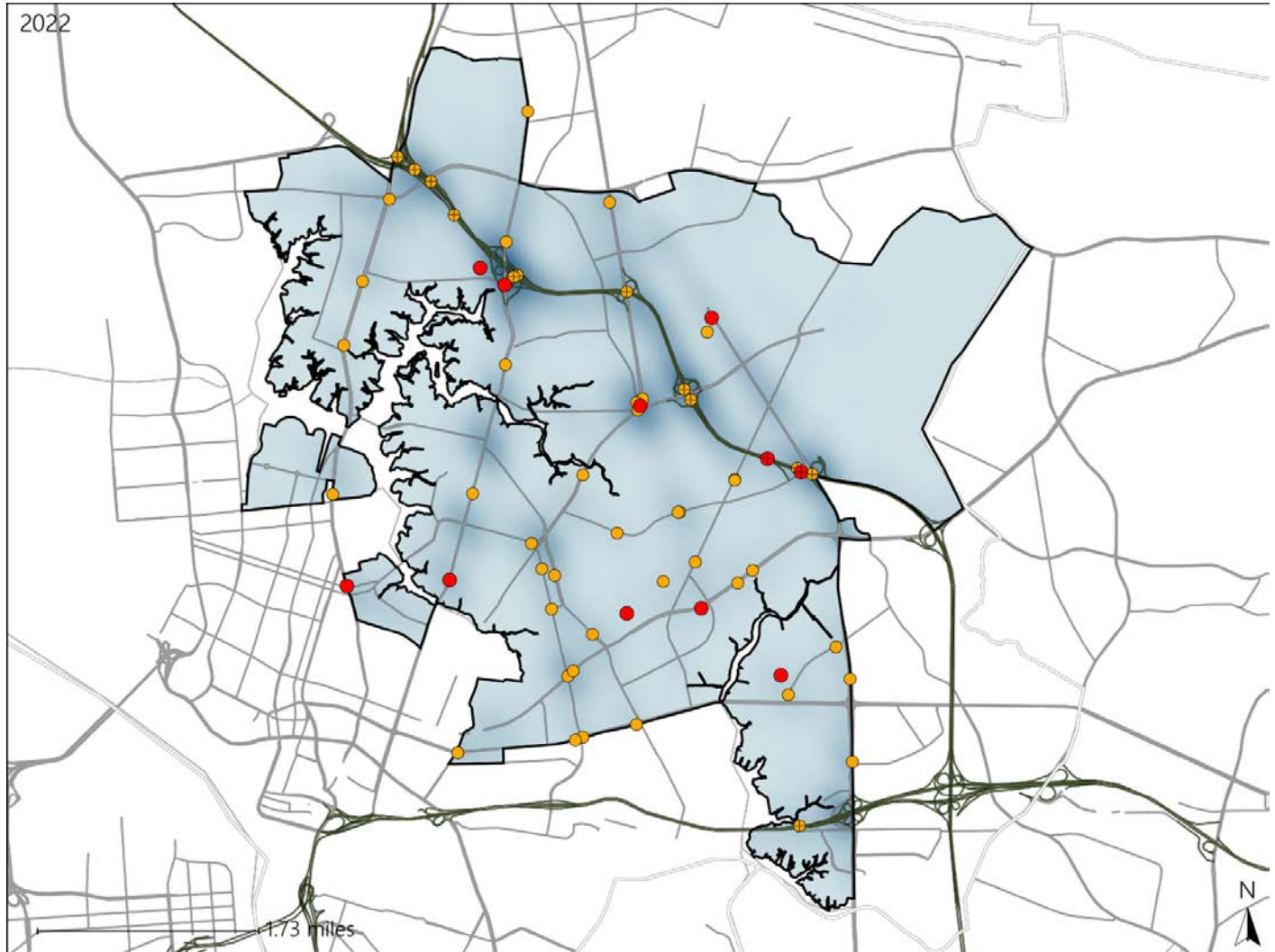


# Virginia House District 93 Crash Statistics

Report Generated May, 2023

	Count	Highest Time Period(s)	Highest Day(s)	Highest Month(s)
<b>Fatal Crashes</b>	<b>11</b>	6:00pm - 8:59pm	Monday • Saturday	August • February
<b>Resulting Fatalities</b>	<b>11</b>	9:00am - 11:59am (36%)	(54%)	(54%)
<b>Serious Injury Crashes</b>	<b>51</b>	6:00pm - 8:59pm (25%)	Saturday (20%)	September (18%)



### House District 93 Crashes

Interstate Crashes

- Fatal
- Serious Injury

Non-interstate Crashes

- Fatal
- Serious Injury

The blue gradient represents the density of all crashes.

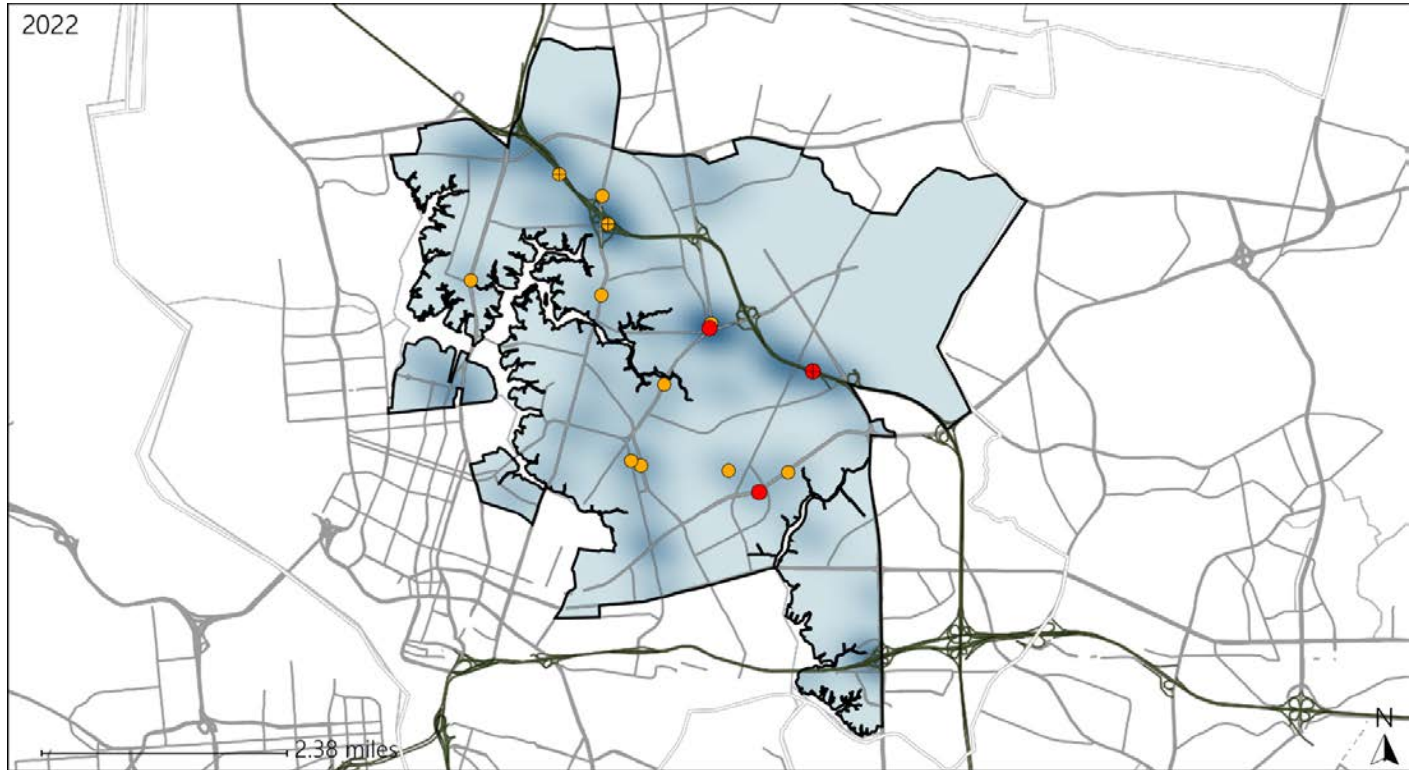


Available Crash Data - Calendar Year (CY)	CY 2019	CY 2020	CY 2021	CY 2022
Total Crashes	1290	1197	1359	1189
Fatal Crashes	10	12	12	11
Injury Crashes	470	422	462	412

# Virginia House District 93 Alcohol Crash Statistics

Report Generated May, 2023

	Count	Highest Time Period(s)	Highest Day(s)	Highest Month(s)
<b>Fatal Crashes</b>	<b>3</b>	6:00pm - 8:59pm	Friday • Saturday	February
<b>Resulting Fatalities</b>	<b>3</b>	9:00pm - 11:59pm (66%)	(66%)	(67%)
<b>Serious Injury Crashes</b>	<b>11</b>	6:00pm - 8:59pm (36%)	Sunday (36%)	June (27%)



### House District 93 Alcohol-Related Crashes

Interstate Crashes                      Non-interstate Crashes  
● Fatal                                      ● Fatal  
● Serious Injury                      ● Serious Injury

The blue gradient represents the density of all alcohol-related crashes.

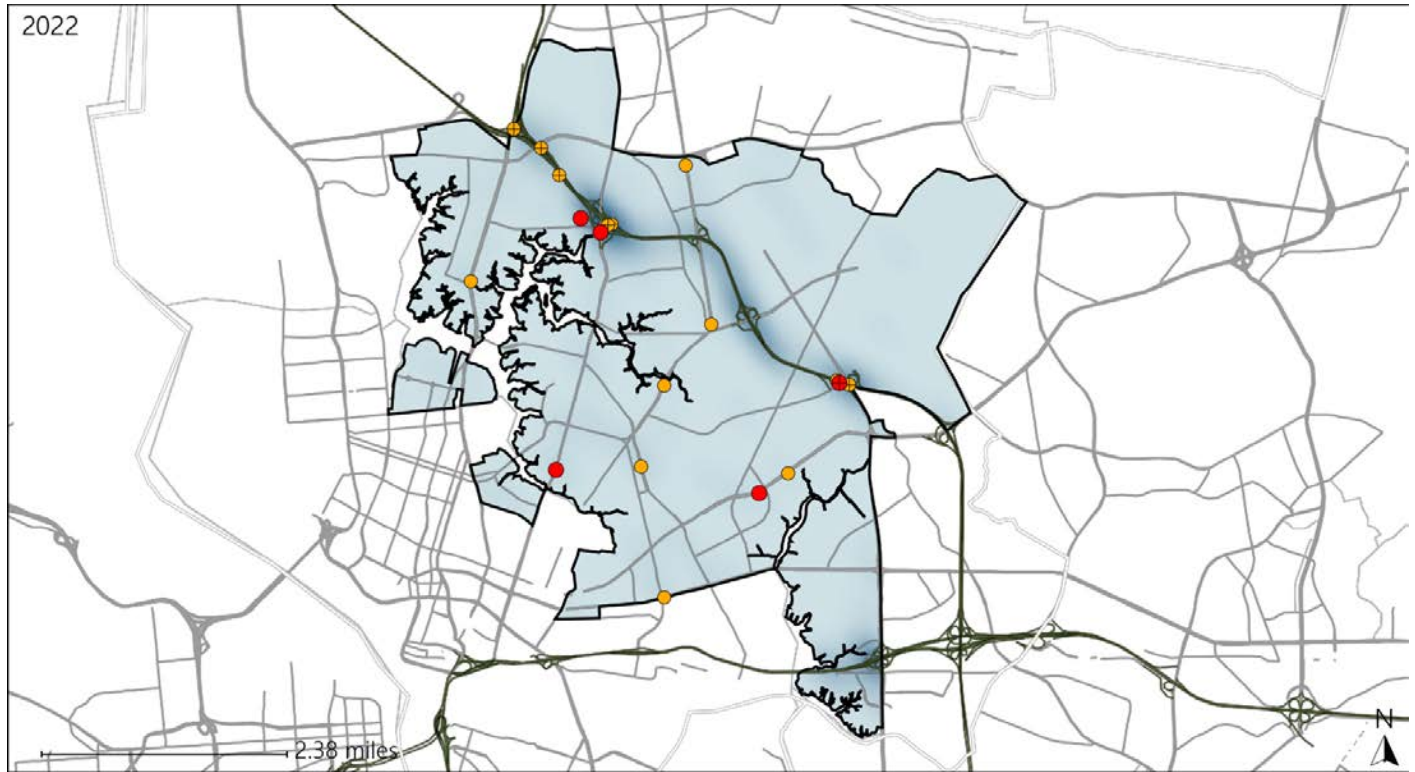


Available Crash Data - Calendar Year (CY)	CY 2019	CY 2020	CY 2021	CY 2022
Total Crashes	1290	1197	1359	1189
Fatal Crashes	10	12	12	11
Injury Crashes	470	422	462	412
Alcohol-Related Fatal Crashes	2	5	6	3
Percent of Alcohol-Related Fatal Crashes to Total Fatal Crashes	20%	42%	50%	27%
Alcohol-Related Injury Crashes	36	29	33	30
Percent of Alcohol-Related Injury Crashes to Total Injury Crashes	8%	7%	7%	7%

# Virginia House District 93 Speed Crash Statistics

Report Generated May, 2023

	Count	Highest Time Period(s)	Highest Day(s)	Highest Month(s)
<b>Fatal Crashes</b>	<b>5</b>	<b>9:00am - 11:59am</b>	<b>Saturday - Thursday</b>	<b>August</b>
<b>Resulting Fatalities</b>	<b>5</b>	(40%)	(80%)	(60%)
<b>Serious Injury Crashes</b>	<b>14</b>	<b>6:00am - 8:59am</b>	<b>Sunday</b>	<b>June - September</b>
		(21%)	(36%)	(42%)



## House District 93 Speed-Related Crashes

Interstate Crashes                      Non-interstate Crashes  
 ● Fatal                                      ● Fatal  
 ● Serious Injury                          ● Serious Injury

The blue gradient represents the density of all speed-related crashes.

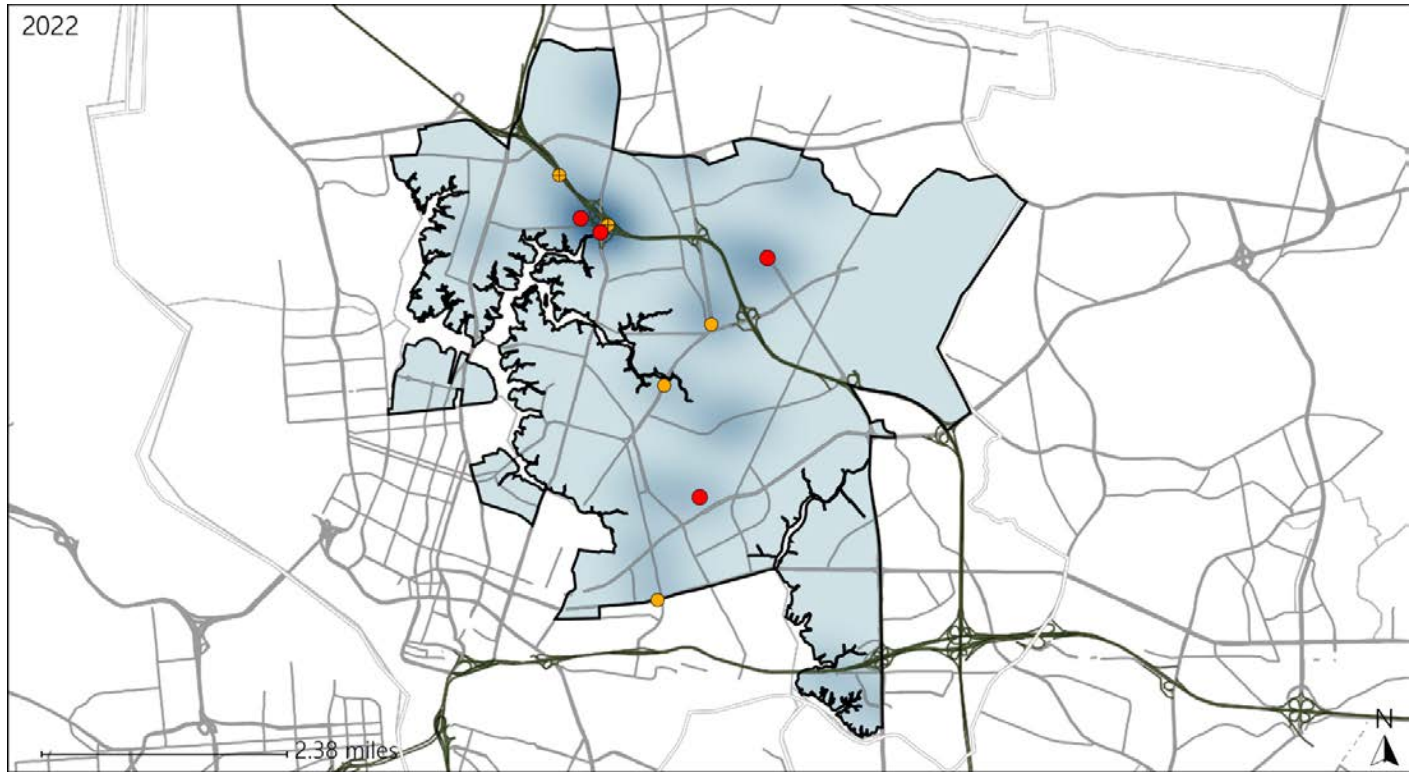


Available Crash Data - Calendar Year (CY)	CY 2019	CY 2020	CY 2021	CY 2022
Total Crashes	1290	1197	1359	1189
Fatal Crashes	10	12	12	11
Injury Crashes	470	422	462	412
Speed-Related Fatal Crashes	5	7	6	5
Percent of Speed-Related Fatal Crashes to Total Fatal Crashes	50%	58%	50%	45%
Speed-Related Injury Crashes	91	105	95	88
Percent of Speed-Related Injury Crashes to Total Injury Crashes	19%	25%	21%	21%

# Virginia House District 93 Unrestrained Crash Statistics

Report Generated May, 2023

	Count	Highest Time Period(s)	Highest Day(s)	Highest Month(s)
<b>Fatal Crashes</b>	<b>4</b>	<b>9:00am - 11:59am</b>	<b>Monday</b>	<b>August • January</b>
<b>Unrestrained Fatalities</b>	<b>4</b>	<b>(50%)</b>	<b>(50%)</b>	<b>(50%)</b>
<b>Serious Injury Crashes</b>	<b>5</b>	<b>3:00am - 5:59am</b>	<b>Sunday</b>	<b>January • July</b>
		<b>(60%)</b>	<b>(60%)</b>	<b>(40%)</b>



### House District 93 Unrestrained-Related Crashes

- |  |  |
|--|--|
| Interstate Crashes                                   | Non-interstate Crashes                               |
| <span style="color: red;">●</span> Fatal             | <span style="color: red;">●</span> Fatal             |
| <span style="color: orange;">●</span> Serious Injury | <span style="color: orange;">●</span> Serious Injury |

The blue gradient represents the density of all unrestrained-related crashes.

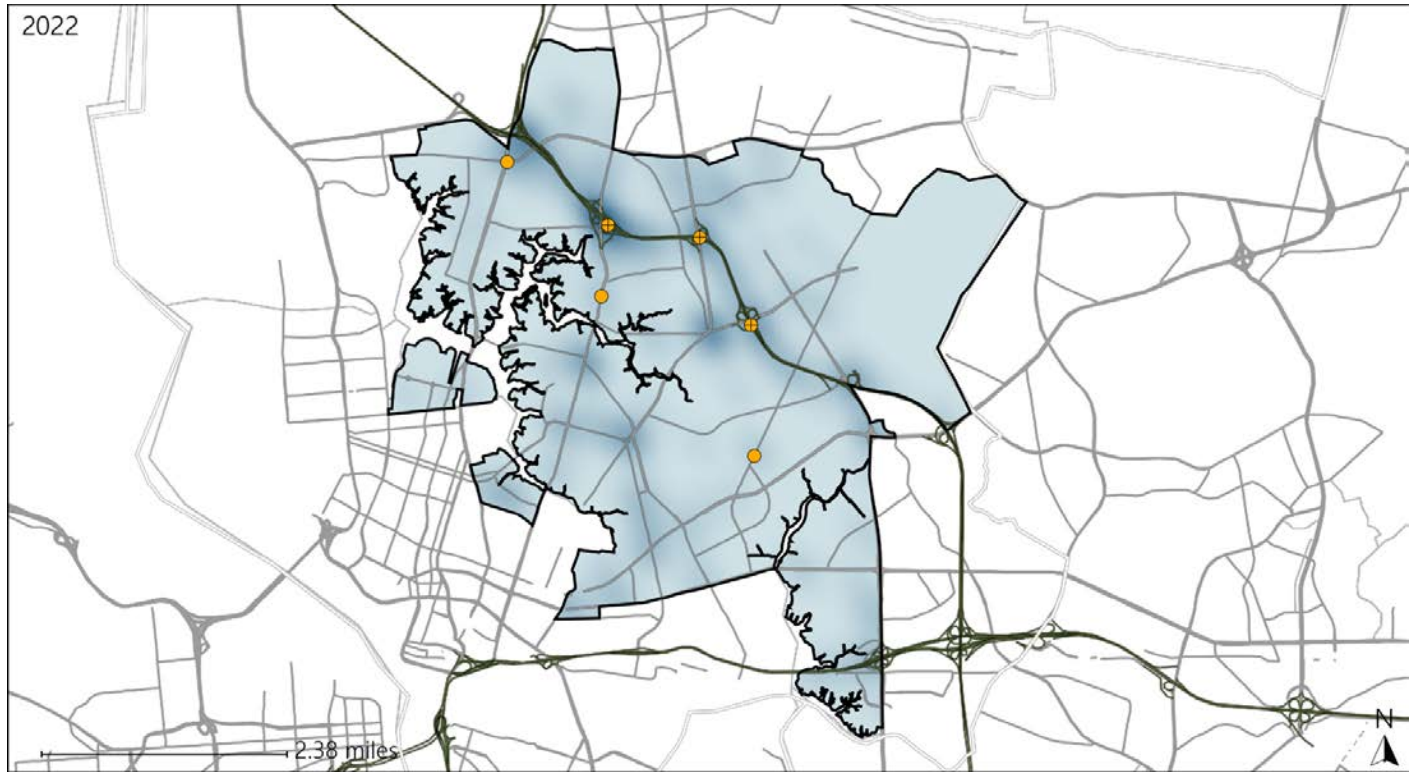


Available Crash Data - Calendar Year (CY)	CY 2019	CY 2020	CY 2021	CY 2022
<b>Total Crashes</b>	<b>1290</b>	<b>1197</b>	<b>1359</b>	<b>1189</b>
<b>Fatalities</b>	<b>10</b>	<b>14</b>	<b>13</b>	<b>11</b>
<b>Injuries</b>	<b>731</b>	<b>629</b>	<b>711</b>	<b>656</b>
<b>Unrestrained Fatalities</b>	<b>2</b>	<b>7</b>	<b>4</b>	<b>4</b>
<b>Percent of Unrestrained Fatalities to Total Fatalities</b>	<b>20%</b>	<b>50%</b>	<b>31%</b>	<b>36%</b>
<b>Unrestrained Injuries</b>	<b>29</b>	<b>40</b>	<b>30</b>	<b>29</b>
<b>Percent of Unrestrained Injuries to Total Injuries</b>	<b>4%</b>	<b>6%</b>	<b>4%</b>	<b>4%</b>

# Virginia House District 93 Distracted Driving Crash Statistics

Report Generated May, 2023

	Count	Highest Time Period(s)	Highest Day(s)	Highest Month(s)
<b>Fatal Crashes</b>	0	-	-	-
<b>Resulting Fatalities</b>	0	-	-	-
<b>Serious Injury Crashes</b>	6	Noon - 2:59pm (33%)	Sunday + Wednesday (66%)	April + August (34%)



## House District 93 Distracted Driving-Related Crashes

- |  |  |
|--|--|
| Interstate Crashes                                   | Non-interstate Crashes                               |
| <span style="color: red;">●</span> Fatal             | <span style="color: red;">●</span> Fatal             |
| <span style="color: orange;">●</span> Serious Injury | <span style="color: orange;">●</span> Serious Injury |

The blue gradient represents the density of all distracted driving-related crashes.



Available Crash Data - Calendar Year (CY)	CY 2019	CY 2020	CY 2021	CY 2022
Total Crashes	1290	1197	1359	1189
Fatal Crashes	10	12	12	11
Injury Crashes	470	422	462	412
Distracted Driving-Related Fatal Crashes	1	1	2	0
Percent of Distracted Driving-Related Fatal Crashes to Total Fatal Crashes	10%	8%	17%	0%
Distracted Driving-Related Injury Crashes	80	72	75	75
Percent of Distracted Driving-Related Injury Crashes to Total Injury Crashes	17%	17%	16%	18%