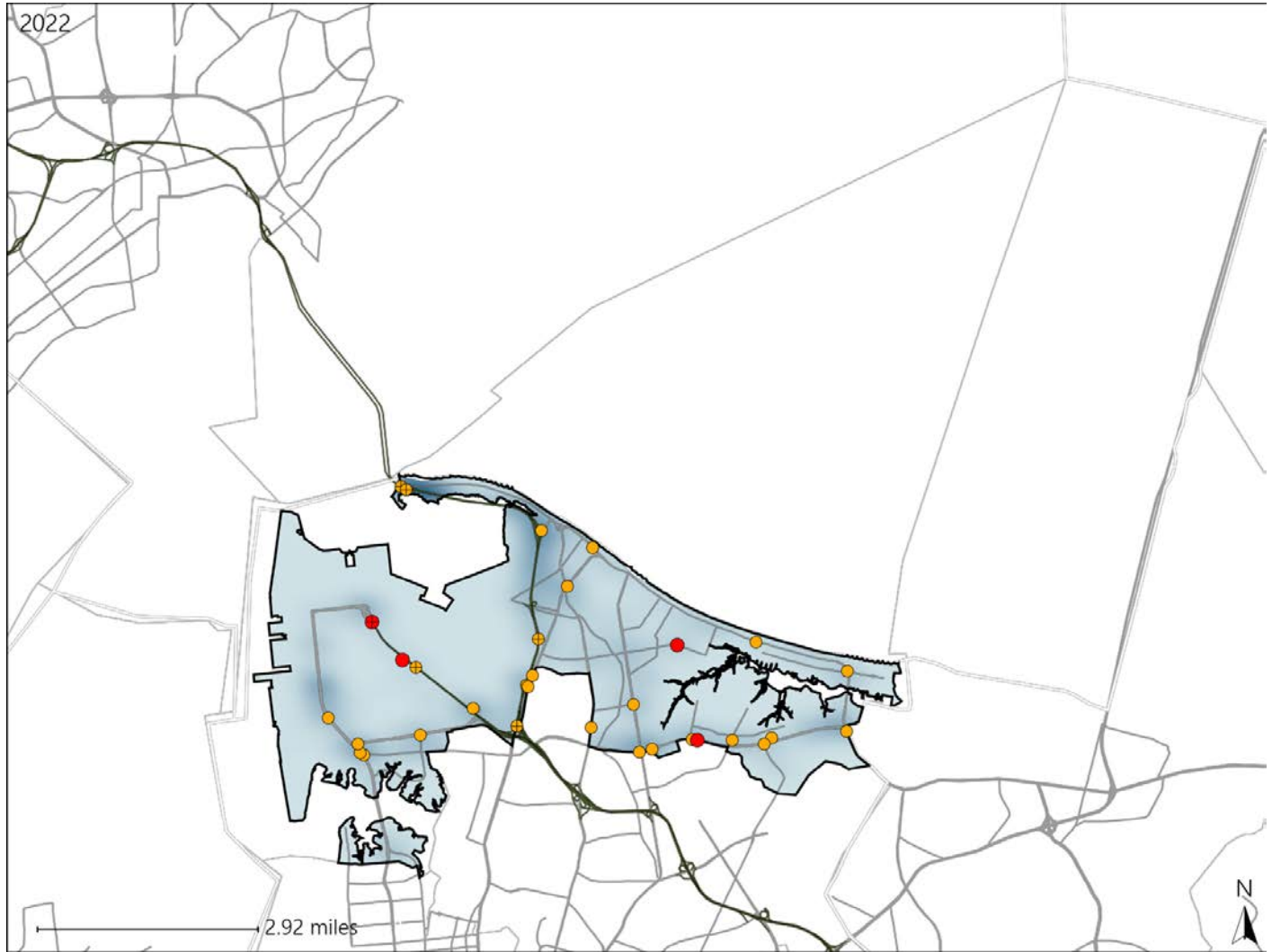


Virginia House District 94 Crash Statistics

Report Generated May, 2023

	Count	Highest Time Period(s)	Highest Day(s)	Highest Month(s)
Fatal Crashes	4	3:00pm - 5:59pm	Thursday	August • February
Resulting Fatalities	4	6:00pm - 8:59pm (50%)	(50%)	(50%)
Serious Injury Crashes	29	3:00pm - 5:59pm (24%)	Sunday (21%)	February • October (28%)



House District 94 Crashes

Interstate Crashes

- Fatal
- Serious Injury

Non-interstate Crashes

- Fatal
- Serious Injury

The blue gradient represents the density of all crashes.

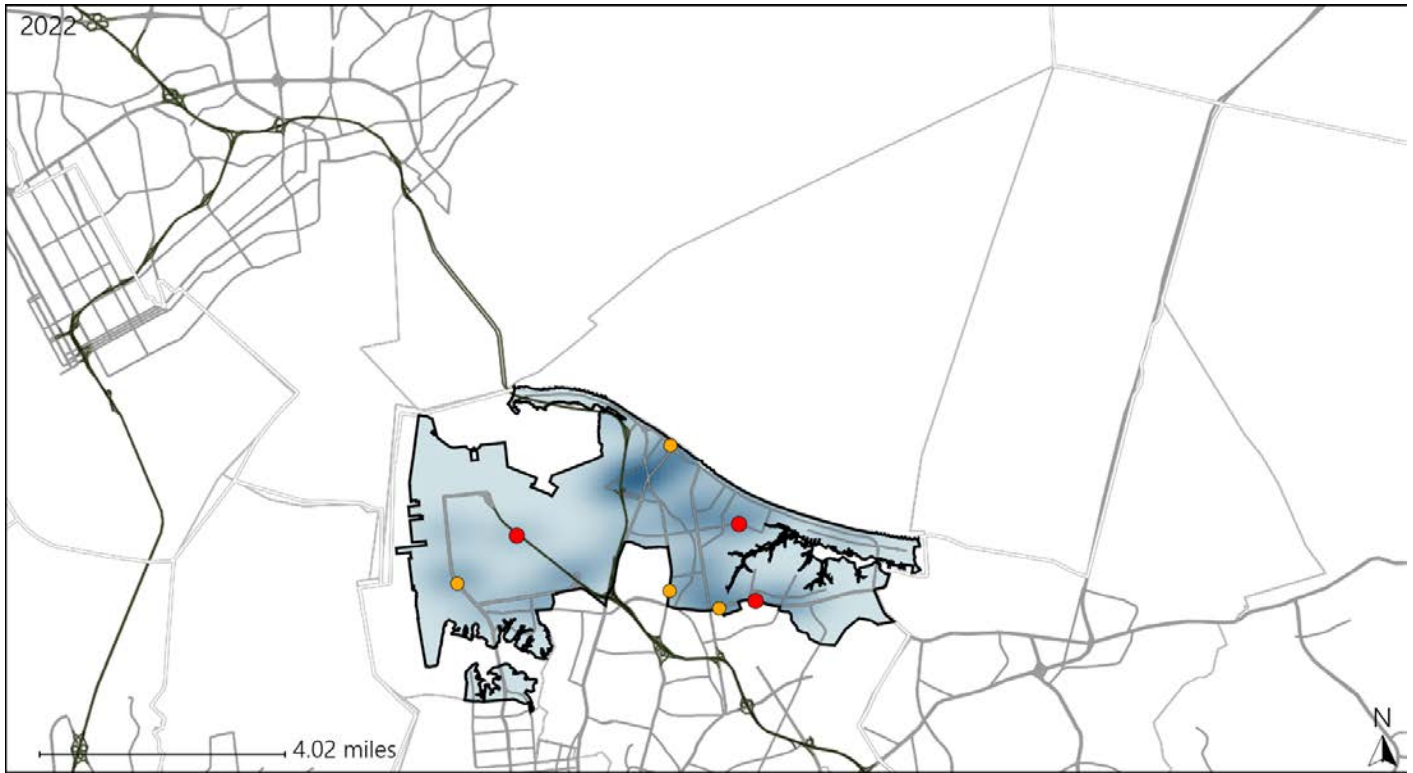


Available Crash Data - Calendar Year (CY)	CY 2019	CY 2020	CY 2021	CY 2022
Total Crashes	900	754	938	789
Fatal Crashes	2	5	9	4
Injury Crashes	280	259	306	254

Virginia House District 94 Alcohol Crash Statistics

Report Generated May, 2023

	Count	Highest Time Period(s)	Highest Day(s)	Highest Month(s)
Fatal Crashes	3	6:00pm - 8:59pm	Thursday	February • June
Resulting Fatalities	3	9:00pm - 11:59pm (66%)	(67%)	(66%)
Serious Injury Crashes	4	3:00pm - 5:59pm 6:00pm - 8:59pm (50%)	Sunday (50%)	February • July (50%)



House District 94 Alcohol-Related Crashes

Interstate Crashes Non-interstate Crashes
 ● Fatal ● Fatal
 ⊕ Serious Injury ⊕ Serious Injury

The blue gradient represents the density of all alcohol-related crashes.

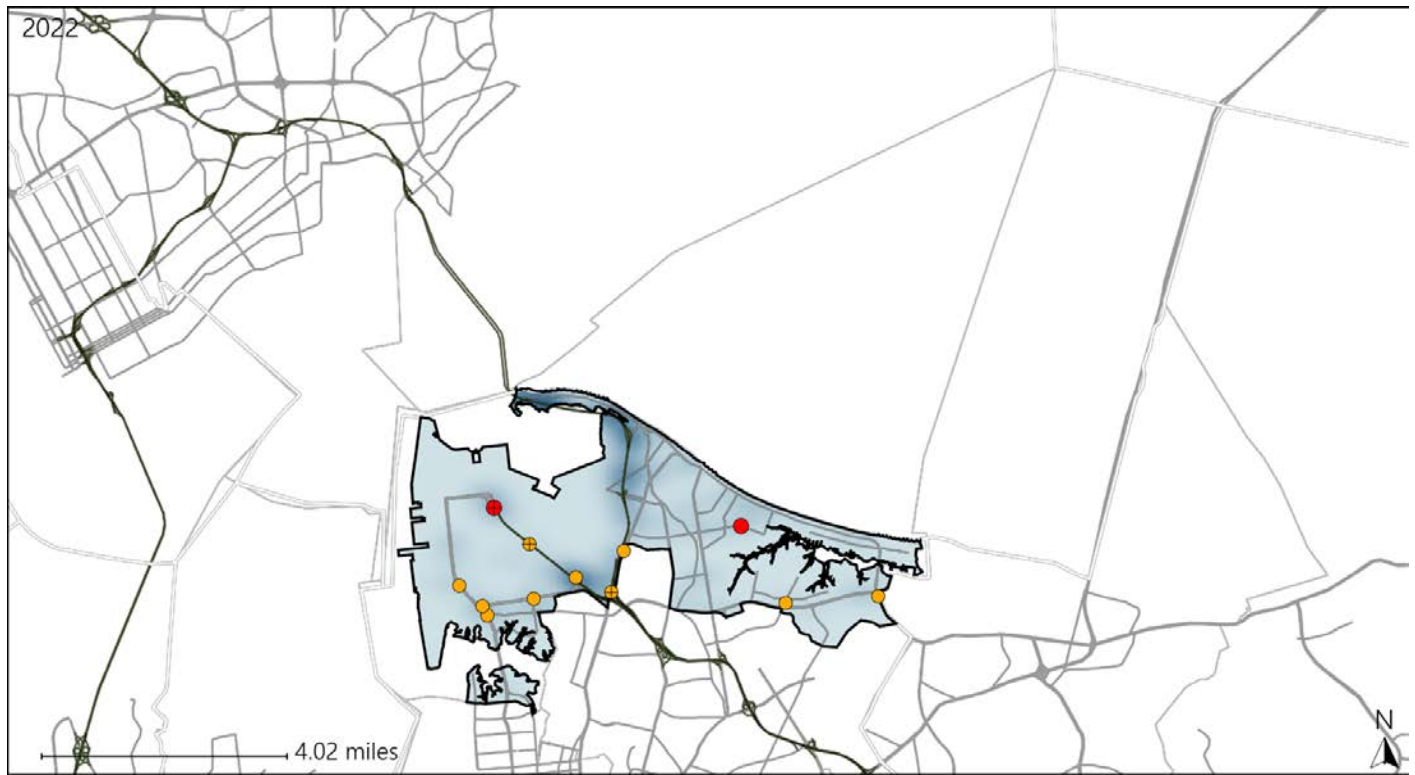


Available Crash Data - Calendar Year (CY)	CY 2019	CY 2020	CY 2021	CY 2022
Total Crashes	900	754	938	789
Fatal Crashes	2	5	9	4
Injury Crashes	280	259	306	254
Alcohol-Related Fatal Crashes	1	2	4	3
Percent of Alcohol-Related Fatal Crashes to Total Fatal Crashes	50%	40%	44%	75%
Alcohol-Related Injury Crashes	20	23	16	12
Percent of Alcohol-Related Injury Crashes to Total Injury Crashes	7%	9%	5%	5%

Virginia House District 94 Speed Crash Statistics

Report Generated May, 2023

	Count	Highest Time Period(s)	Highest Day(s)	Highest Month(s)
Fatal Crashes	2	3:00pm - 5:59pm	Monday • Thursday	August • June
Resulting Fatalities	2	9:00pm - 11:59pm (100%)	(100%)	(100%)
Serious Injury Crashes	10	3:00am - 5:59am 3:00pm - 5:59pm (40%)	Monday (30%)	June • October (40%)



House District 94 Speed-Related Crashes

Interstate Crashes Non-interstate Crashes
 ● Fatal ● Fatal
 ⊕ Serious Injury ⊕ Serious Injury

The blue gradient represents the density of all speed-related crashes.

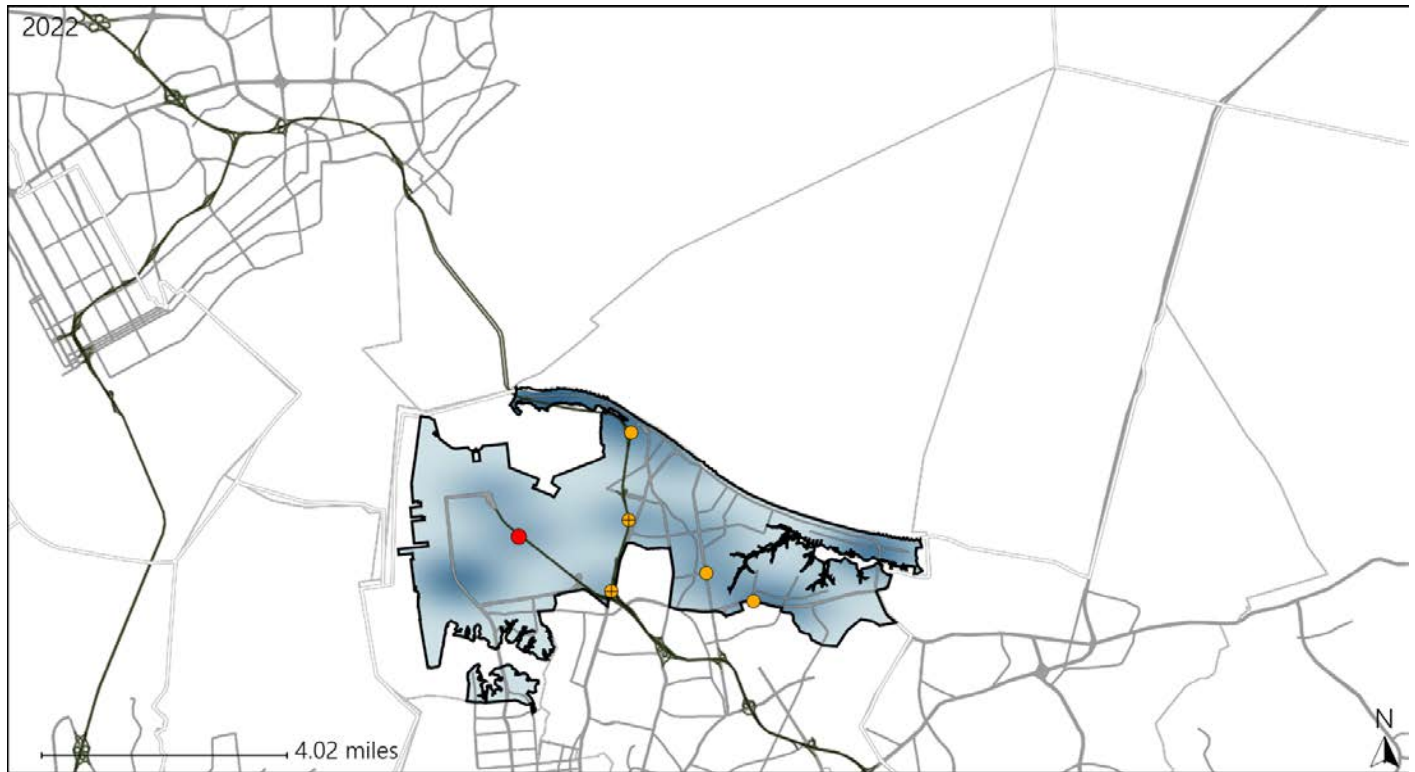


Available Crash Data - Calendar Year (CY)	CY 2019	CY 2020	CY 2021	CY 2022
Total Crashes	900	754	938	789
Fatal Crashes	2	5	9	4
Injury Crashes	280	259	306	254
Speed-Related Fatal Crashes	1	2	4	2
Percent of Speed-Related Fatal Crashes to Total Fatal Crashes	50%	40%	44%	50%
Speed-Related Injury Crashes	57	51	82	58
Percent of Speed-Related Injury Crashes to Total Injury Crashes	20%	20%	27%	23%

Virginia House District 94 Unrestrained Crash Statistics

Report Generated May, 2023

	Count	Highest Time Period(s)	Highest Day(s)	Highest Month(s)
Fatal Crashes	1	Midnight - 2:59am	Thursday	February
Unrestrained Fatalities	1	(100%)	(100%)	(100%)
Serious Injury Crashes	5	3:00pm - 5:59pm 9:00am - 11:59am	Sunday	December • January
		(40%)	(40%)	(40%)



House District 94 Unrestrained-Related Crashes

- | | |
|--------------------|------------------------|
| Interstate Crashes | Non-interstate Crashes |
| Fatal | Fatal |
| Serious Injury | Serious Injury |

The blue gradient represents the density of all unrestrained-related crashes.



Available Crash Data - Calendar Year (CY)	CY 2019	CY 2020	CY 2021	CY 2022
Total Crashes	900	754	938	789
Fatalities	2	5	9	4
Injuries	426	415	448	413
Unrestrained Fatalities	1	1	4	1
Percent of Unrestrained Fatalities to Total Fatalities	50%	20%	44%	25%
Unrestrained Injuries	10	19	34	19
Percent of Unrestrained Injuries to Total Injuries	2%	5%	8%	5%

Virginia House District 94 Distracted Driving Crash Statistics

Report Generated May, 2023

	Count	Highest Time Period(s)	Highest Day(s)	Highest Month(s)
Fatal Crashes	0	-	-	-
Resulting Fatalities	0	-	-	-
Serious Injury Crashes	4	9:00pm - 11:59pm (50%)	Monday (50%)	December • February (50%)



House District 94 Distracted Driving-Related Crashes

- | | |
|--------------------|------------------------|
| Interstate Crashes | Non-interstate Crashes |
| ● Fatal | ● Fatal |
| ● Serious Injury | ● Serious Injury |

The blue gradient represents the density of all distracted driving-related crashes.



Available Crash Data - Calendar Year (CY)	CY 2019	CY 2020	CY 2021	CY 2022
Total Crashes	900	754	938	789
Fatal Crashes	2	5	9	4
Injury Crashes	280	259	306	254
Distracted Driving-Related Fatal Crashes	0	1	2	0
Percent of Distracted Driving-Related Fatal Crashes to Total Fatal Crashes	0%	20%	22%	0%
Distracted Driving-Related Injury Crashes	50	47	49	41
Percent of Distracted Driving-Related Injury Crashes to Total Injury Crashes	18%	18%	16%	16%