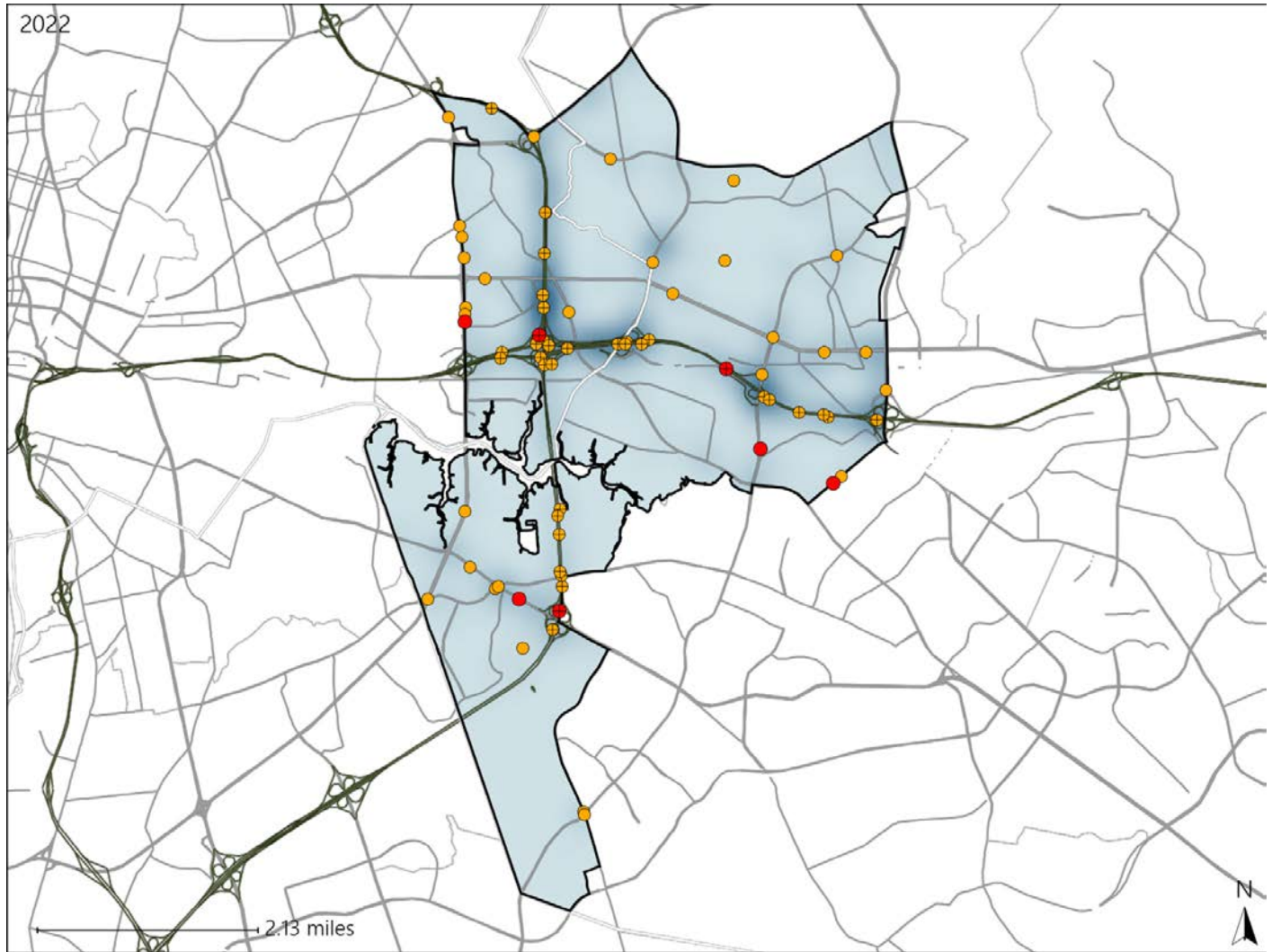


Virginia House District 95 Crash Statistics

Report Generated May, 2023

	Count	Highest Time Period(s)	Highest Day(s)	Highest Month(s)
Fatal Crashes	7	9:00pm - 11:59pm	Sunday • Thursday	August
Resulting Fatalities	7	(57%)	(58%)	(29%)
Serious Injury Crashes	68	3:00pm - 5:59pm	Sunday	August
		(25%)	(19%)	(12%)



House District 95 Crashes

Interstate Crashes

- Fatal
- Serious Injury

Non-interstate Crashes

- Fatal
- Serious Injury

The blue gradient represents the density of all crashes.

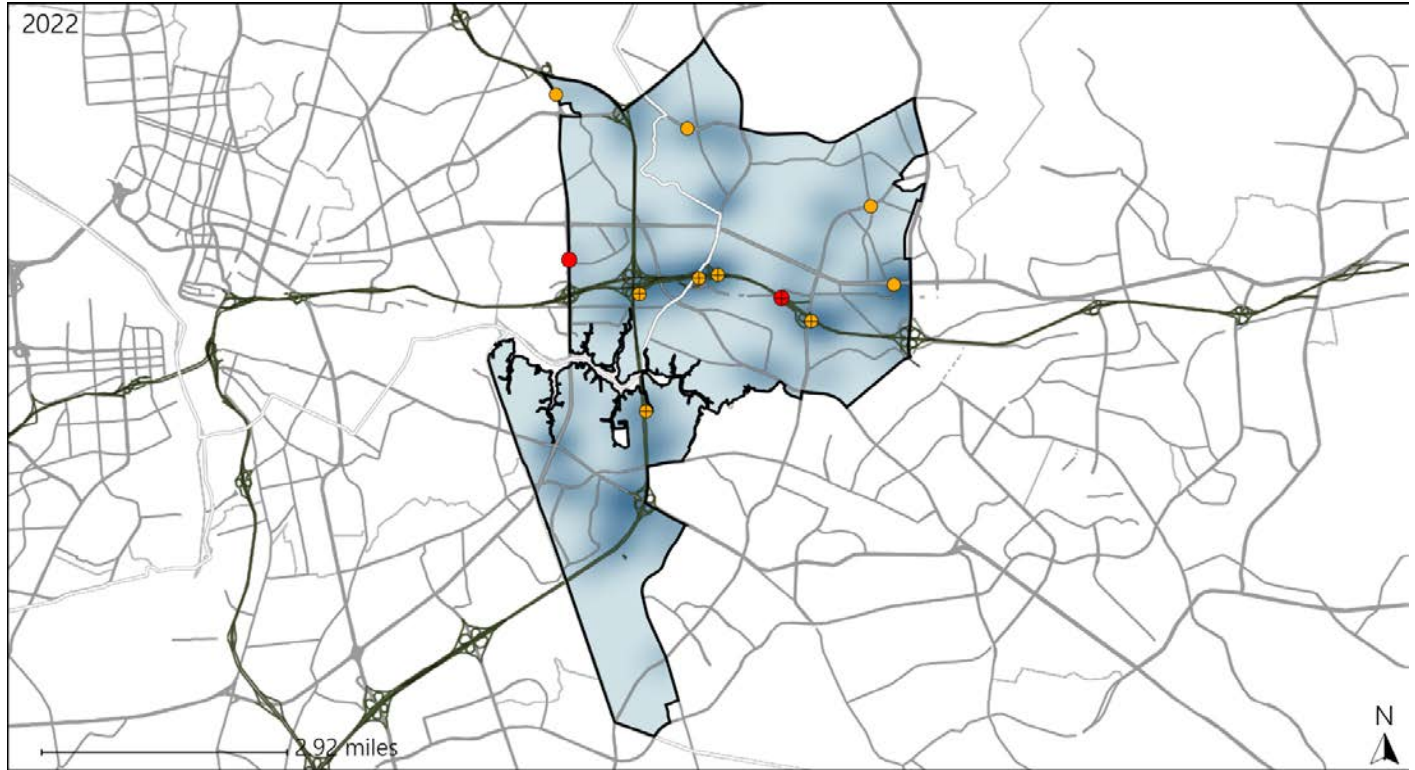


Available Crash Data - Calendar Year (CY)	CY 2019	CY 2020	CY 2021	CY 2022
Total Crashes	2105	1777	2053	1769
Fatal Crashes	6	8	10	7
Injury Crashes	659	540	657	523





Virginia House District 95 Alcohol Crash Statistics

Report Generated May, 2023

	Count	Highest Time Period(s)	Highest Day(s)	Highest Month(s)
Fatal Crashes	2	9:00pm - 11:59pm	Sunday - Wednesday	June - May
Resulting Fatalities	2	(100%)	(100%)	(100%)
Serious Injury Crashes	9	9:00pm - 11:59pm	Sunday	March
		(56%)	(56%)	(33%)



House District 95 Alcohol-Related Crashes

Interstate Crashes Non-interstate Crashes
 Fatal  Fatal
 Serious Injury  Serious Injury

The blue gradient represents the density of all alcohol-related crashes.

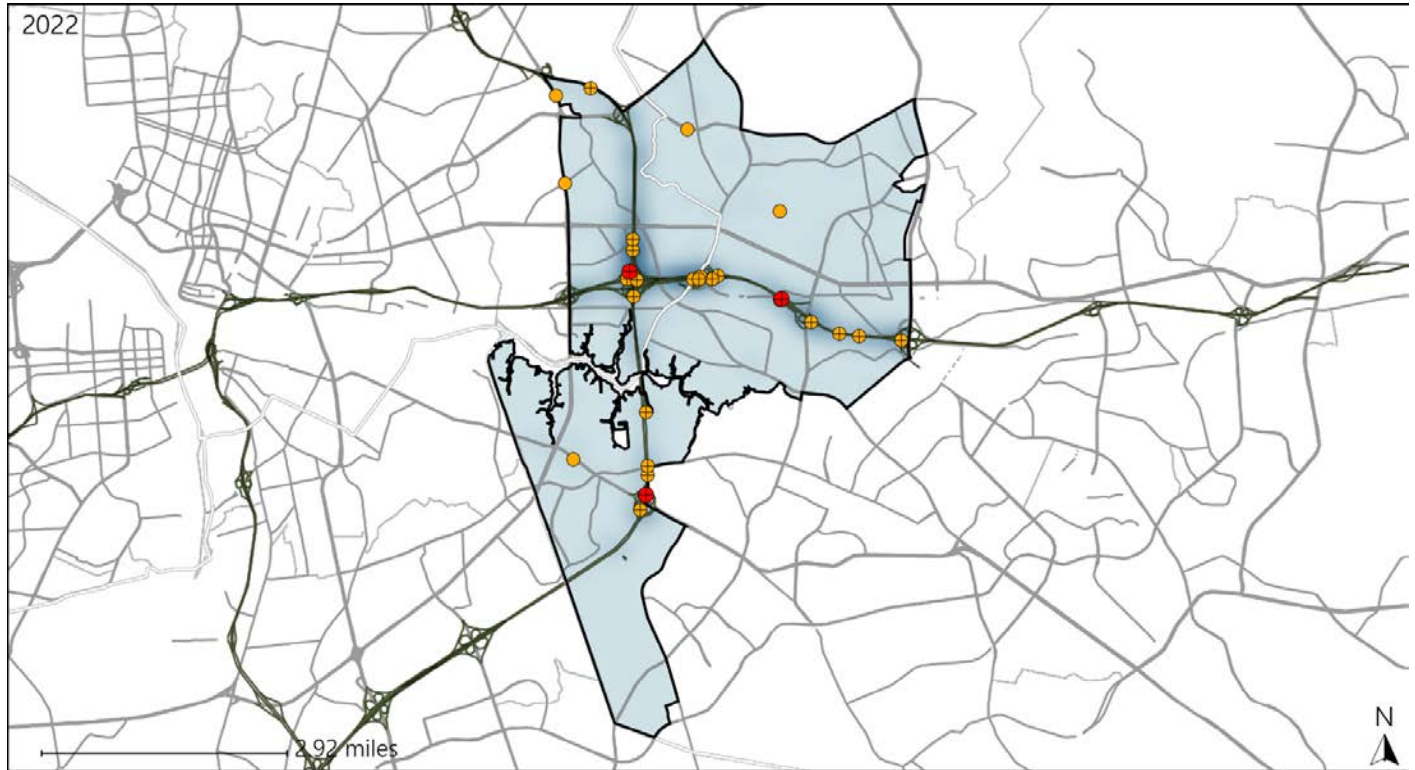


Available Crash Data - Calendar Year (CY)	CY 2019	CY 2020	CY 2021	CY 2022
Total Crashes	2105	1777	2053	1769
Fatal Crashes	6	8	10	7
Injury Crashes	659	540	657	523
Alcohol-Related Fatal Crashes	2	4	7	2
Percent of Alcohol-Related Fatal Crashes to Total Fatal Crashes	33%	50%	70%	29%
Alcohol-Related Injury Crashes	38	32	55	32
Percent of Alcohol-Related Injury Crashes to Total Injury Crashes	6%	6%	8%	6%

Virginia House District 95 Speed Crash Statistics

Report Generated May, 2023

	Count	Highest Time Period(s)	Highest Day(s)	Highest Month(s)
Fatal Crashes	3	6:00pm - 8:59pm	Wednesday	April • December
Resulting Fatalities	3	9:00pm - 11:59pm (66%)	(67%)	(66%)
Serious Injury Crashes	28	3:00pm - 5:59pm (32%)	Monday • Sunday (36%)	April (14%)



House District 95 Speed-Related Crashes

Interstate Crashes

Non-interstate Crashes

- Fatal
- Serious Injury

- Fatal
- Serious Injury

The blue gradient represents the density of all speed-related crashes.

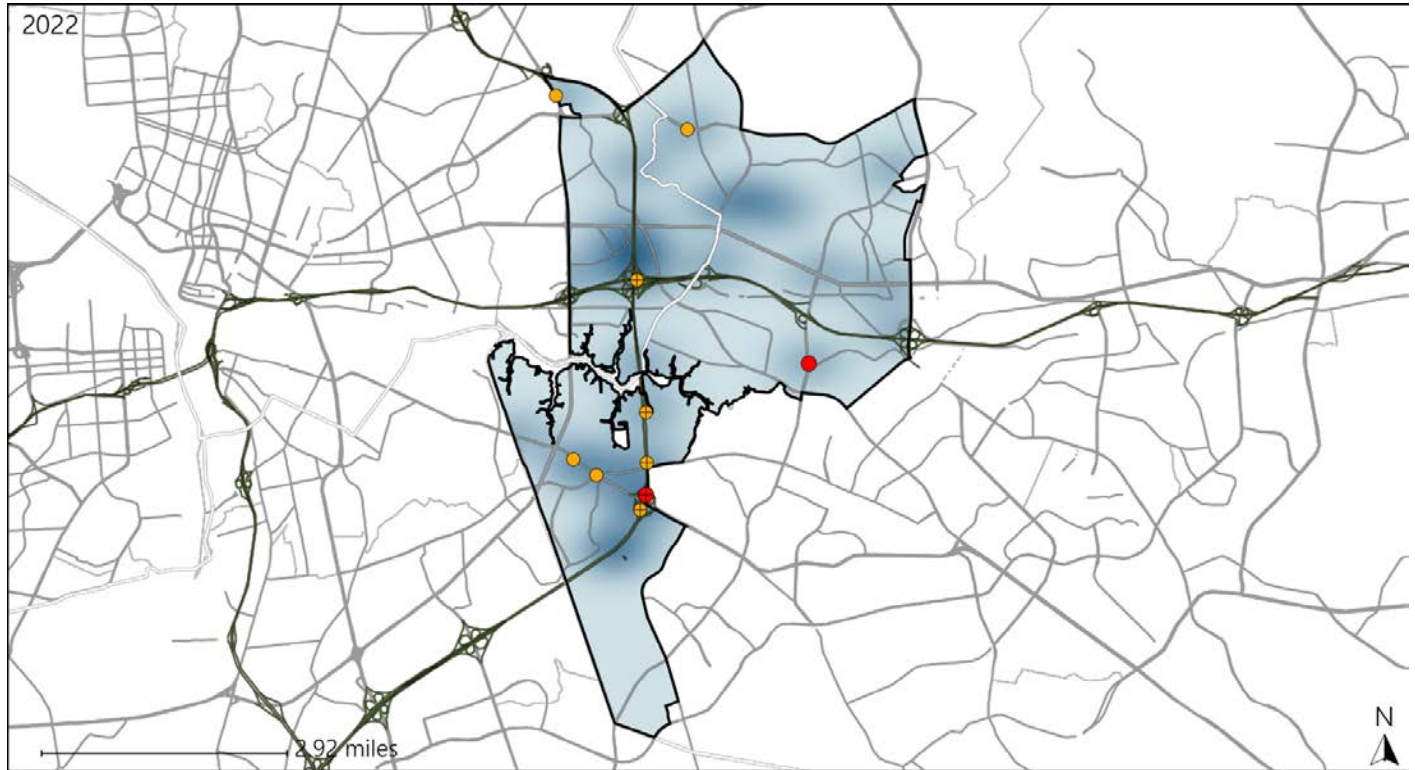


Available Crash Data - Calendar Year (CY)	CY 2019	CY 2020	CY 2021	CY 2022
Total Crashes	2105	1777	2053	1769
Fatal Crashes	6	8	10	7
Injury Crashes	659	540	657	523
Speed-Related Fatal Crashes	4	6	5	3
Percent of Speed-Related Fatal Crashes to Total Fatal Crashes	67%	75%	50%	43%
Speed-Related Injury Crashes	188	166	178	132
Percent of Speed-Related Injury Crashes to Total Injury Crashes	29%	31%	27%	25%

Virginia House District 95 Unrestrained Crash Statistics

Report Generated May, 2023

	Count	Highest Time Period(s)	Highest Day(s)	Highest Month(s)
Fatal Crashes	2	9:00pm - 11:59pm	Sunday • Thursday	December • September
Unrestrained Fatalities	2	Noon - 2:59pm (100%)	(100%)	(100%)
Serious Injury Crashes	8	Midnight - 2:59am (50%)	Saturday • Sunday (50%)	December (38%)



House District 95 Unrestrained-Related Crashes

- | | |
|--------------------|------------------------|
| Interstate Crashes | Non-interstate Crashes |
| ● Fatal | ● Fatal |
| ● Serious Injury | ● Serious Injury |

The blue gradient represents the density of all unrestrained-related crashes.

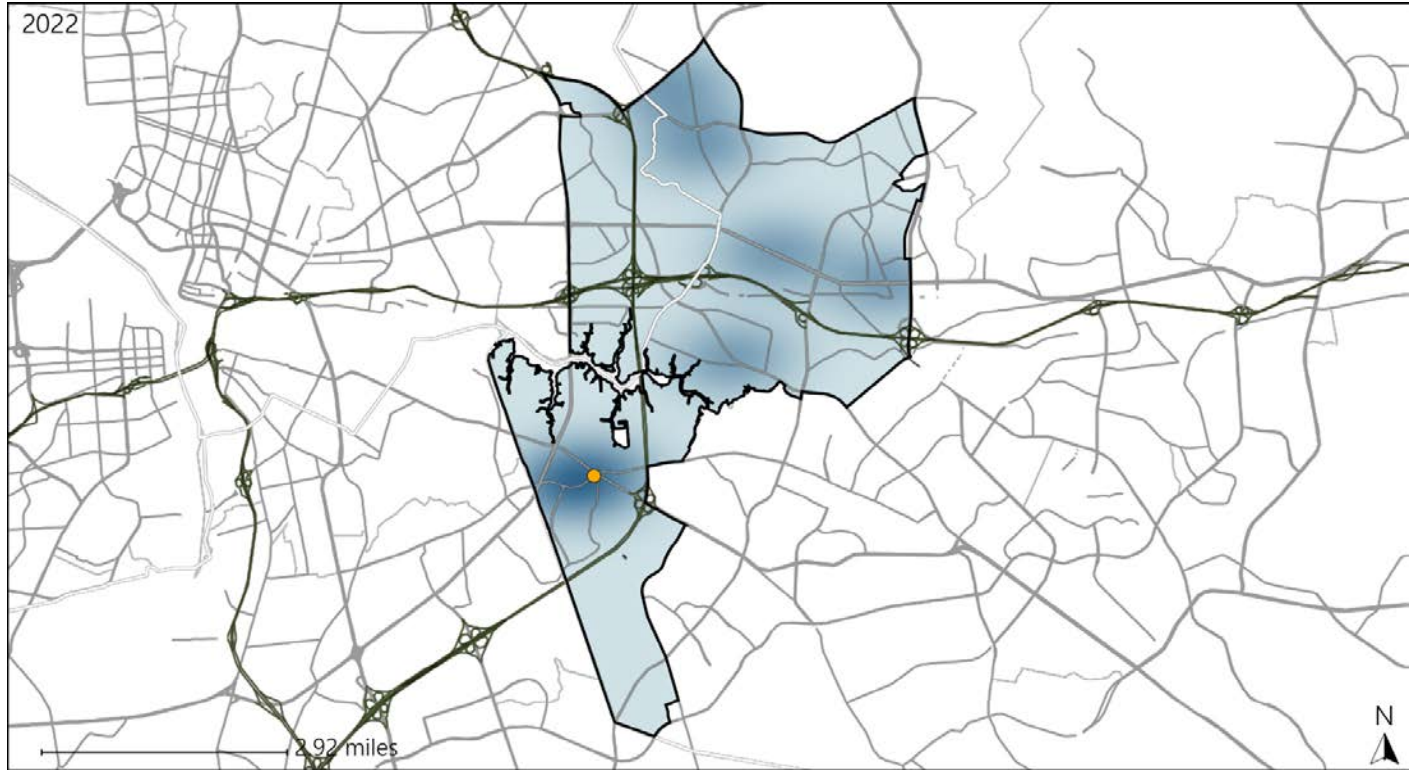


Available Crash Data - Calendar Year (CY)	CY 2019	CY 2020	CY 2021	CY 2022
Total Crashes	2105	1777	2053	1769
Fatalities	7	9	11	7
Injuries	1054	809	1024	829
Unrestrained Fatalities	5	3	1	2
Percent of Unrestrained Fatalities to Total Fatalities	71%	33%	9%	29%
Unrestrained Injuries	41	31	40	28
Percent of Unrestrained Injuries to Total Injuries	4%	4%	4%	3%

Virginia House District 95 Bicycle Crash Statistics

Report Generated May, 2023

	Count	Highest Time Period(s)	Highest Day(s)	Highest Month(s)
Fatal Crashes	0	-	-	-
Bicycle Fatalities	0	-	-	-
Serious Injury Crashes	1	9:00am - 11:59am (100%)	Sunday (100%)	June (100%)



House District 95 Bicycle-Related Crashes

Interstate Crashes

Non-interstate Crashes

- Fatal
- Serious Injury

- Fatal
- Serious Injury

The blue gradient represents the density of all bicycle-related crashes.

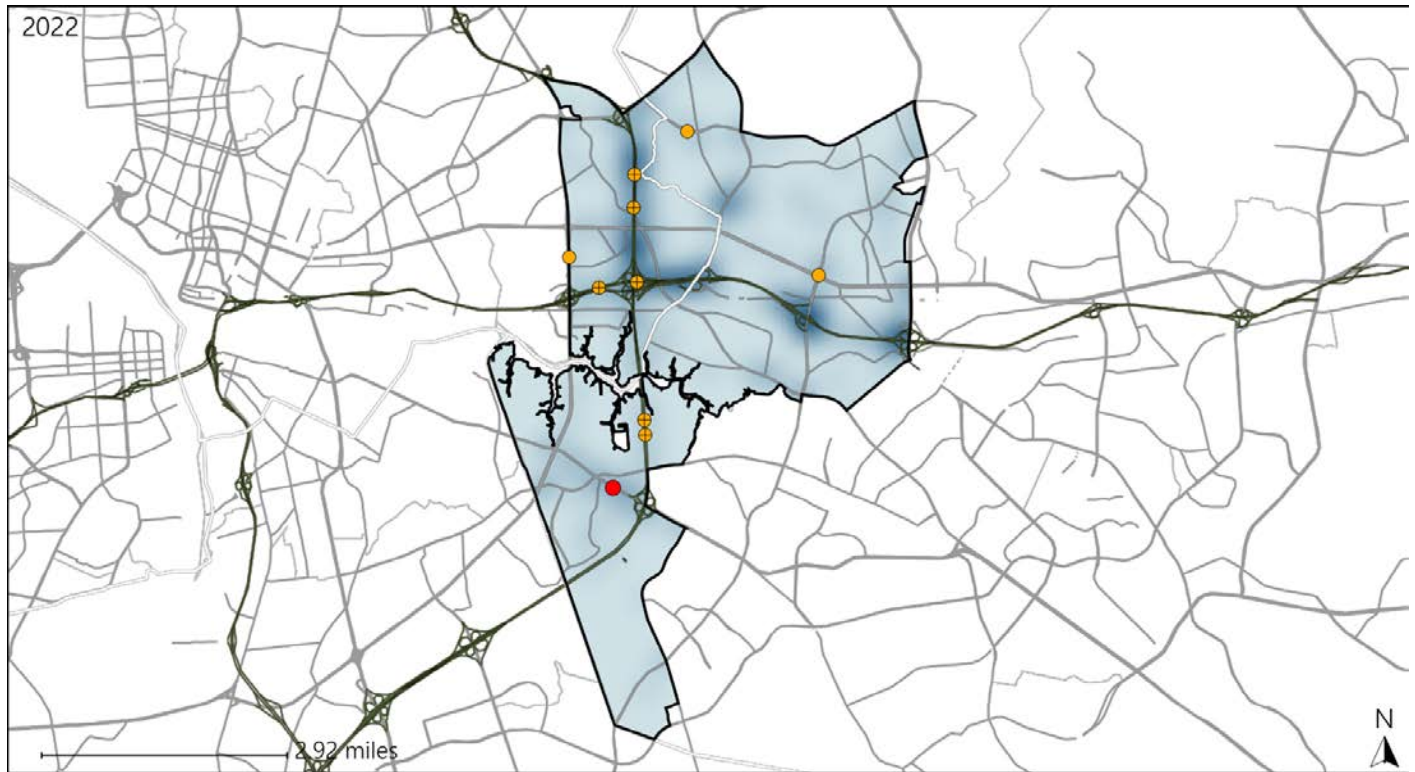


Available Crash Data - Calendar Year (CY)	CY 2019	CY 2020	CY 2021	CY 2022
Total Crashes	2105	1777	2053	1769
Fatal Crashes	6	8	10	7
Injury Crashes	659	540	657	523
Bicycle-Related Fatal Crashes	0	0	1	0
Percent of Bicycle-Related Fatal Crashes to Total Fatal Crashes	0%	0%	10%	0%
Bicycle-Related Injury Crashes	11	15	11	7
Percent of Bicycle-Related Injury Crashes to Total Injury Crashes	2%	3%	2%	1%

Virginia House District 95 Distracted Driving Crash Statistics

Report Generated May, 2023

	Count	Highest Time Period(s)	Highest Day(s)	Highest Month(s)
Fatal Crashes	1	9:00pm - 11:59pm	Thursday	August
Resulting Fatalities	1	(100%)	(100%)	(100%)
Serious Injury Crashes	9	3:00pm - 5:59pm 6:00am - 8:59am	Monday + Tuesday	April - August
		(66%)	(66%)	(44%)



House District 95 Distracted Driving-Related Crashes

- | | |
|--|--|
| Interstate Crashes | Non-interstate Crashes |
| ● Fatal | ● Fatal |
| ⊕ Serious Injury | ⊕ Serious Injury |

The blue gradient represents the density of all distracted driving-related crashes.



Available Crash Data - Calendar Year (CY)	CY 2019	CY 2020	CY 2021	CY 2022
Total Crashes	2105	1777	2053	1769
Fatal Crashes	6	8	10	7
Injury Crashes	659	540	657	523
Distracted Driving-Related Fatal Crashes	2	3	0	1
Percent of Distracted Driving-Related Fatal Crashes to Total Fatal Crashes	33%	38%	0%	14%
Distracted Driving-Related Injury Crashes	103	80	105	72
Percent of Distracted Driving-Related Injury Crashes to Total Injury Crashes	16%	15%	16%	14%