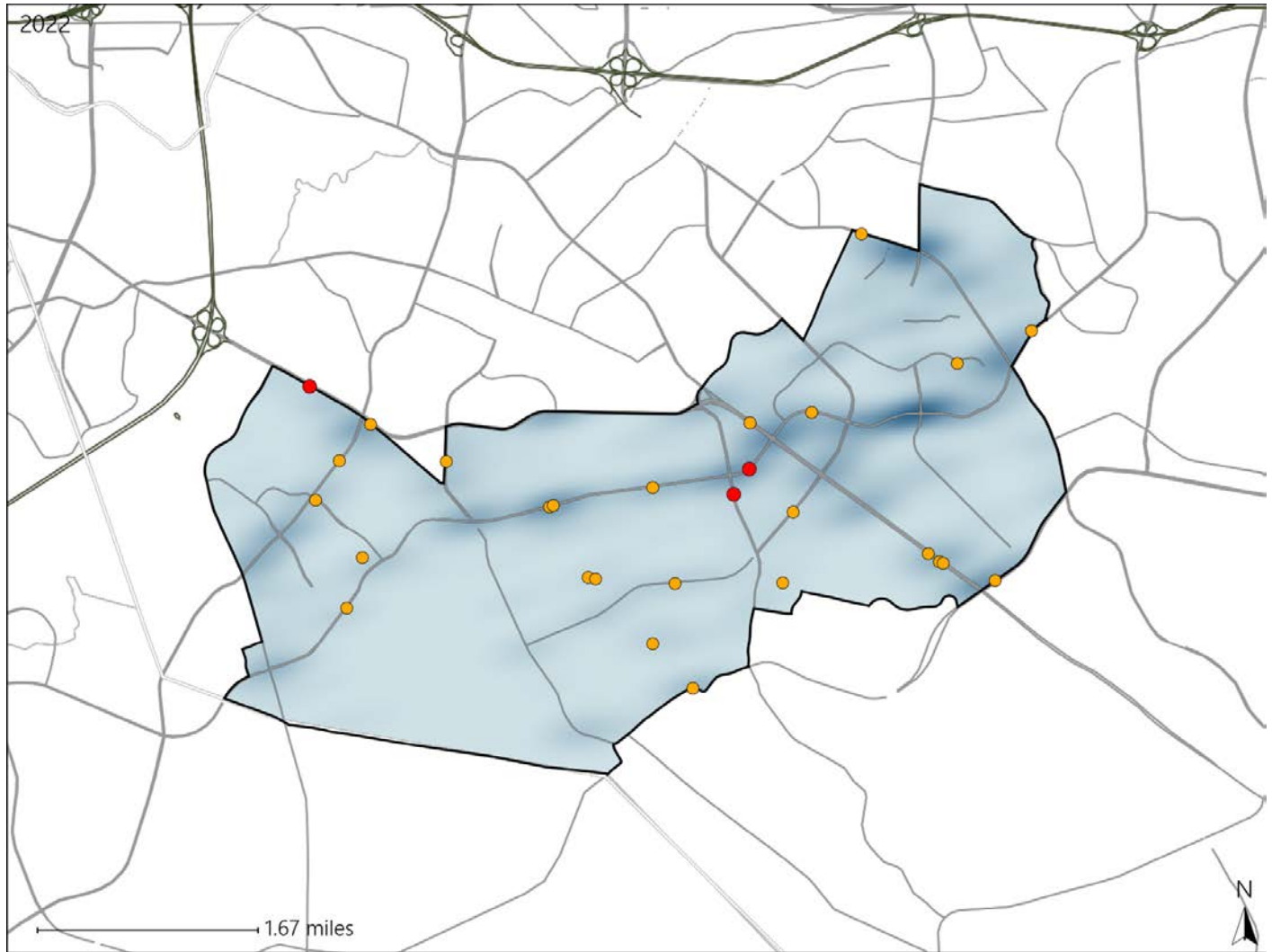


Virginia House District 96 Crash Statistics

Report Generated May, 2023

	Count	Highest Time Period(s)	Highest Day(s)	Highest Month(s)
Fatal Crashes	3	3:00pm - 5:59pm	Saturday	August
Resulting Fatalities	3	(67%)	(67%)	(67%)
Serious Injury Crashes	25	3:00pm - 5:59pm	Wednesday	August • February
		(36%)	(24%)	(24%)



House District 96 Crashes

Interstate Crashes

- Fatal
- Serious Injury

Non-interstate Crashes

- Fatal
- Serious Injury

The blue gradient represents the density of all crashes.

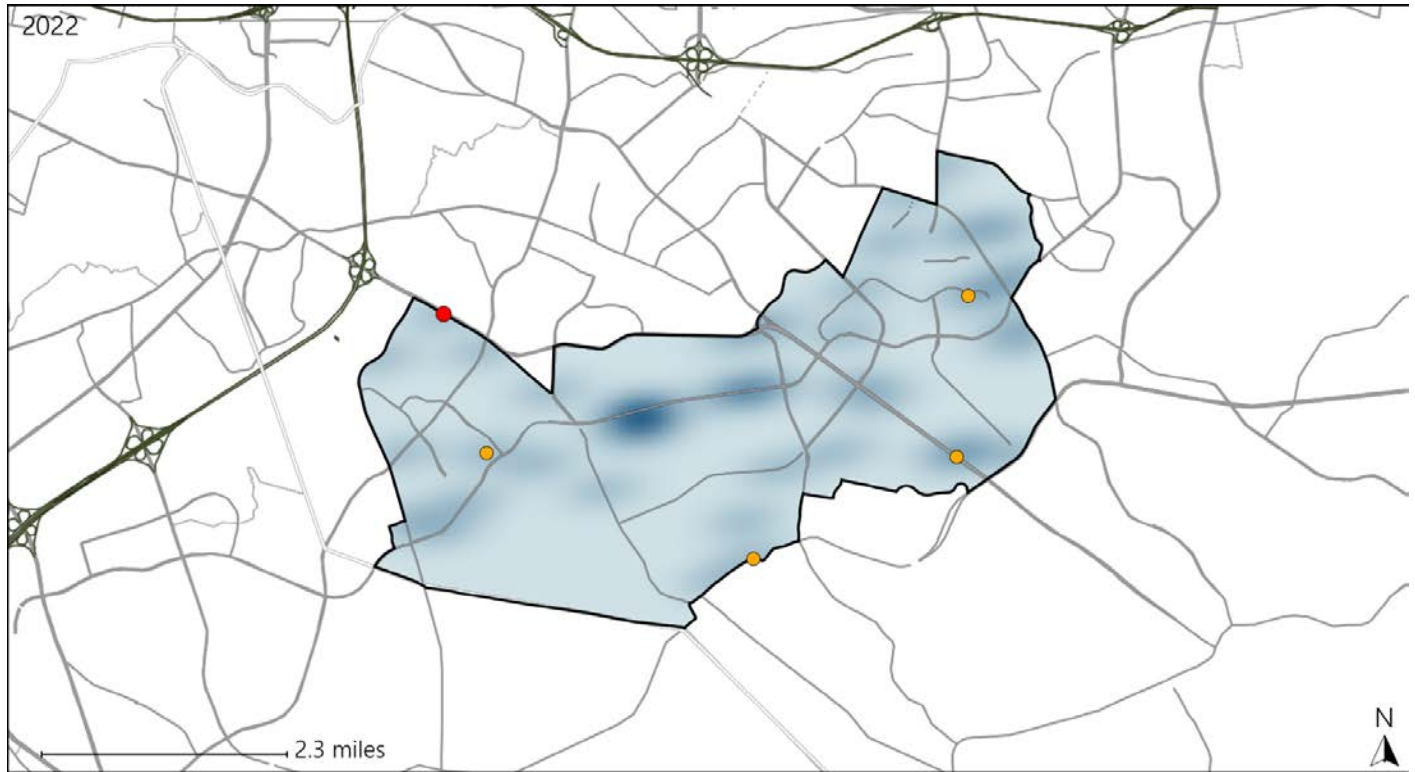


Available Crash Data - Calendar Year (CY)	CY 2019	CY 2020	CY 2021	CY 2022
Total Crashes	713	680	739	712
Fatal Crashes	1	2	1	3
Injury Crashes	246	198	274	221





Virginia House District 96 Alcohol Crash Statistics

Report Generated May, 2023

	Count	Highest Time Period(s)	Highest Day(s)	Highest Month(s)
Fatal Crashes	1	9:00pm - 11:59pm	Saturday	August
Resulting Fatalities	1	(100%)	(100%)	(100%)
Serious Injury Crashes	4	Midnight - 2:59am	Thursday	August • February
		(50%)	(50%)	(50%)



House District 96 Alcohol-Related Crashes

Interstate Crashes Non-interstate Crashes
 Fatal  Fatal
 Serious Injury  Serious Injury

The blue gradient represents the density of all alcohol-related crashes.

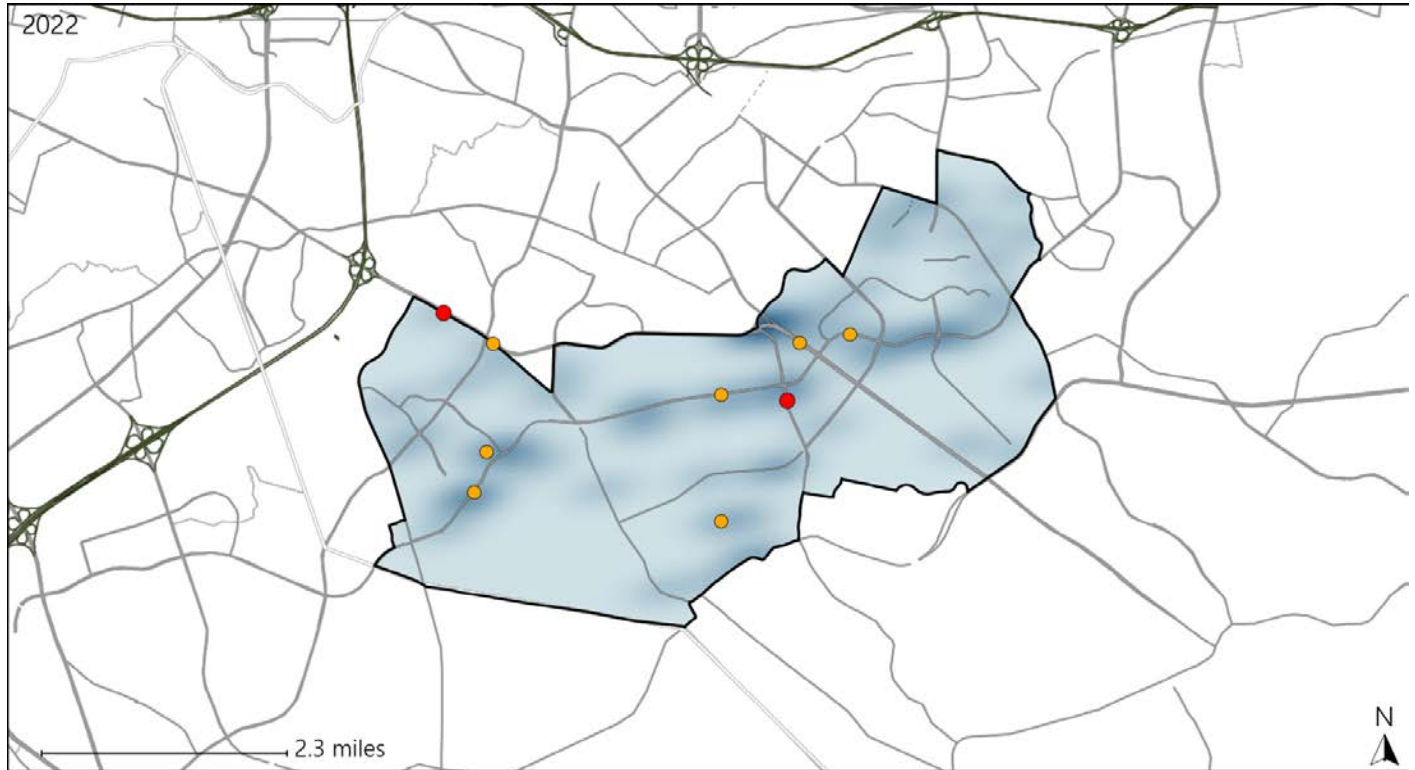


Available Crash Data - Calendar Year (CY)	CY 2019	CY 2020	CY 2021	CY 2022
Total Crashes	713	680	739	712
Fatal Crashes	1	2	1	3
Injury Crashes	246	198	274	221
Alcohol-Related Fatal Crashes	1	0	0	1
Percent of Alcohol-Related Fatal Crashes to Total Fatal Crashes	100%	0%	0%	33%
Alcohol-Related Injury Crashes	16	19	16	18
Percent of Alcohol-Related Injury Crashes to Total Injury Crashes	7%	10%	6%	8%

Virginia House District 96 Speed Crash Statistics

Report Generated May, 2023

	Count	Highest Time Period(s)	Highest Day(s)	Highest Month(s)
Fatal Crashes	2	3:00pm - 5:59pm	Saturday • Tuesday	August
Resulting Fatalities	2	9:00pm - 11:59pm (100%)	(100%)	(100%)
Serious Injury Crashes	7	3:00pm - 5:59pm (86%)	Monday • Wednesday (58%)	September (29%)



House District 96 Speed-Related Crashes

Interstate Crashes Non-interstate Crashes
 ● Fatal ● Fatal
 ● Serious Injury ● Serious Injury

The blue gradient represents the density of all speed-related crashes.

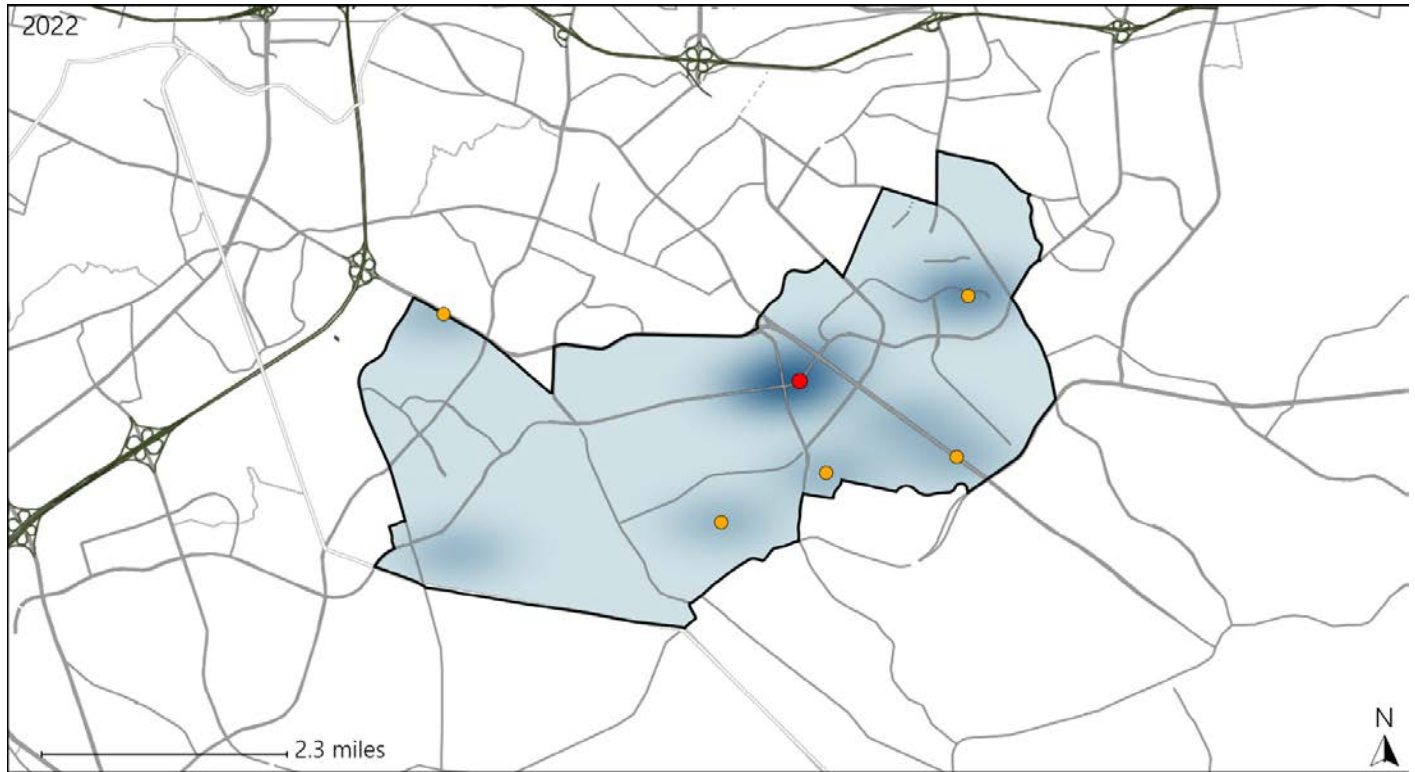


Available Crash Data - Calendar Year (CY)	CY 2019	CY 2020	CY 2021	CY 2022
Total Crashes	713	680	739	712
Fatal Crashes	1	2	1	3
Injury Crashes	246	198	274	221
Speed-Related Fatal Crashes	0	1	0	2
Percent of Speed-Related Fatal Crashes to Total Fatal Crashes	0%	50%	0%	67%
Speed-Related Injury Crashes	13	21	11	32
Percent of Speed-Related Injury Crashes to Total Injury Crashes	5%	11%	4%	14%

Virginia House District 96 Unrestrained Crash Statistics

Report Generated May, 2023

	Count	Highest Time Period(s)	Highest Day(s)	Highest Month(s)
Fatal Crashes	1	3:00pm - 5:59pm	Saturday	July
Unrestrained Fatalities	1	(100%)	(100%)	(100%)
Serious Injury Crashes	5	9:00pm - 11:59pm	Wednesday	August • December
		(40%)	(40%)	(40%)



House District 96 Unrestrained-Related Crashes

Interstate Crashes

- Fatal
- Serious Injury

Non-interstate Crashes

- Fatal
- Serious Injury

The blue gradient represents the density of all unrestrained-related crashes.

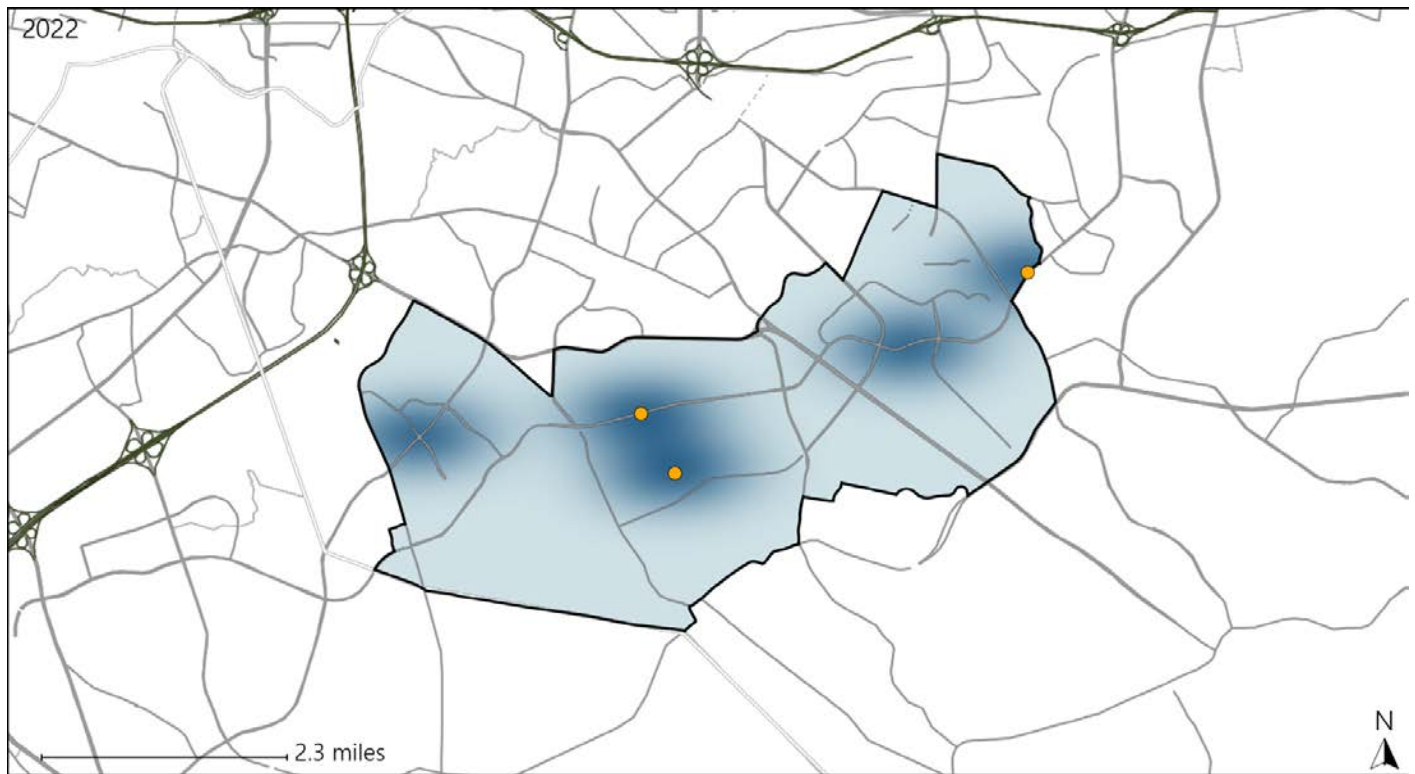


Available Crash Data - Calendar Year (CY)	CY 2019	CY 2020	CY 2021	CY 2022
Total Crashes	713	680	739	712
Fatalities	1	2	1	3
Injuries	445	353	485	369
Unrestrained Fatalities	0	1	0	1
Percent of Unrestrained Fatalities to Total Fatalities	0%	50%	0%	33%
Unrestrained Injuries	8	15	14	11
Percent of Unrestrained Injuries to Total Injuries	2%	4%	3%	3%

Virginia House District 96 Pedestrian Crash Statistics

Report Generated May, 2023

	Count	Highest Time Period(s)	Highest Day(s)	Highest Month(s)
Fatal Crashes	0	-	-	-
Pedestrian Fatalities	0	-	-	-
Serious Injury Crashes	3	3:00pm - 5:59pm 6:00am - 8:59am (66%)	Friday (67%)	July • June (66%)



House District 96 Pedestrian-Related Crashes

- | | |
|--------------------|------------------------|
| Interstate Crashes | Non-interstate Crashes |
| ● Fatal | ● Fatal |
| ⊕ Serious Injury | ● Serious Injury |

The blue gradient represents the density of all pedestrian-related crashes.

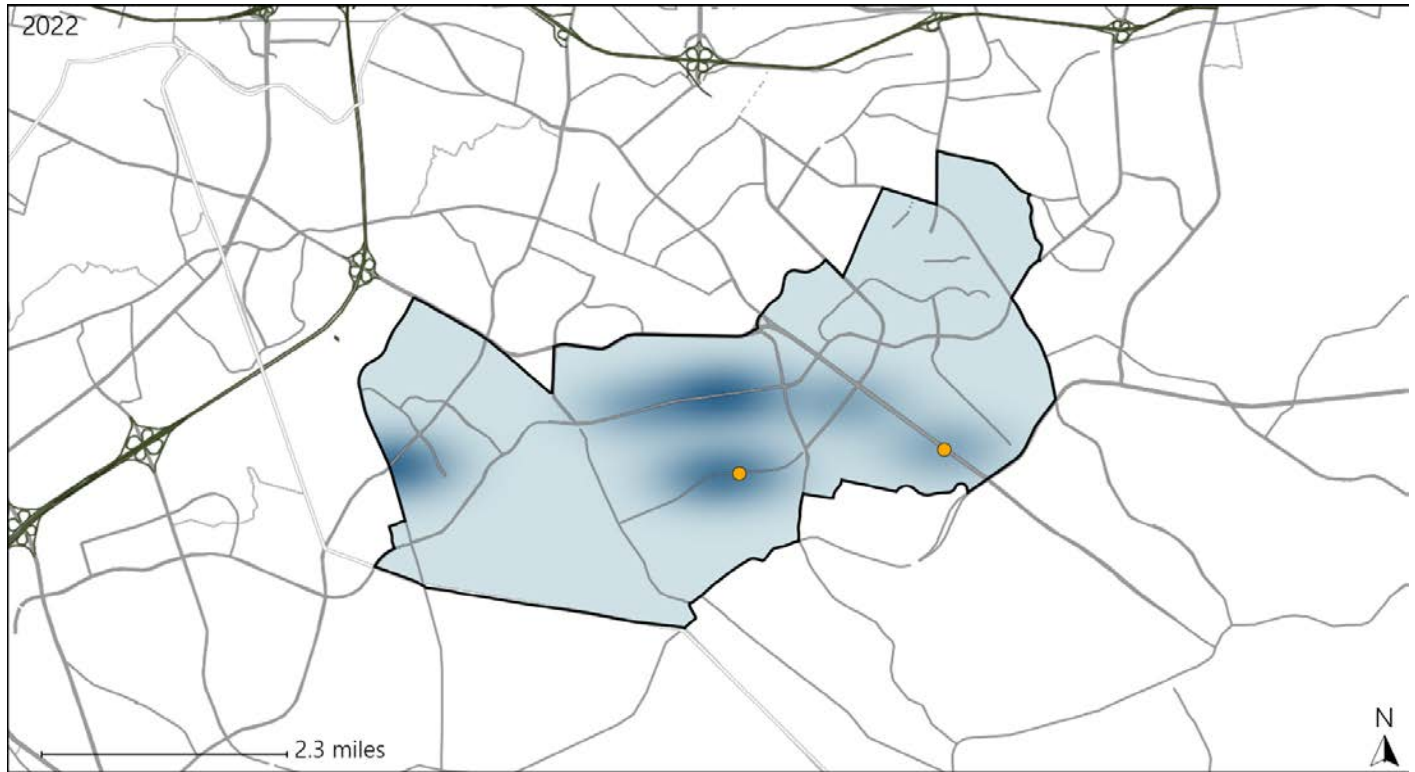


Available Crash Data - Calendar Year (CY)	CY 2019	CY 2020	CY 2021	CY 2022
Total Crashes	713	680	739	712
Fatal Crashes	1	2	1	3
Injury Crashes	246	198	274	221
Pedestrian-Related Fatal Crashes	0	0	0	0
Percent of Pedestrian-Related Fatal Crashes to Total Fatal Crashes	0%	0%	0%	0%
Pedestrian-Related Injury Crashes	12	5	14	5
Percent of Pedestrian-Related Injury Crashes to Total Injury Crashes	5%	3%	5%	2%

Virginia House District 96 Bicycle Crash Statistics

Report Generated May, 2023

	Count	Highest Time Period(s)	Highest Day(s)	Highest Month(s)
Fatal Crashes	0	-	-	-
Bicycle Fatalities	0	-	-	-
Serious Injury Crashes	2	6:00am - 8:59am (100%)	Friday • Tuesday (100%)	August • March (100%)



House District 96 Bicycle-Related Crashes

Interstate Crashes Non-interstate Crashes
 ● Fatal ● Fatal
 ● Serious Injury ● Serious Injury

The blue gradient represents the density of all bicycle-related crashes.

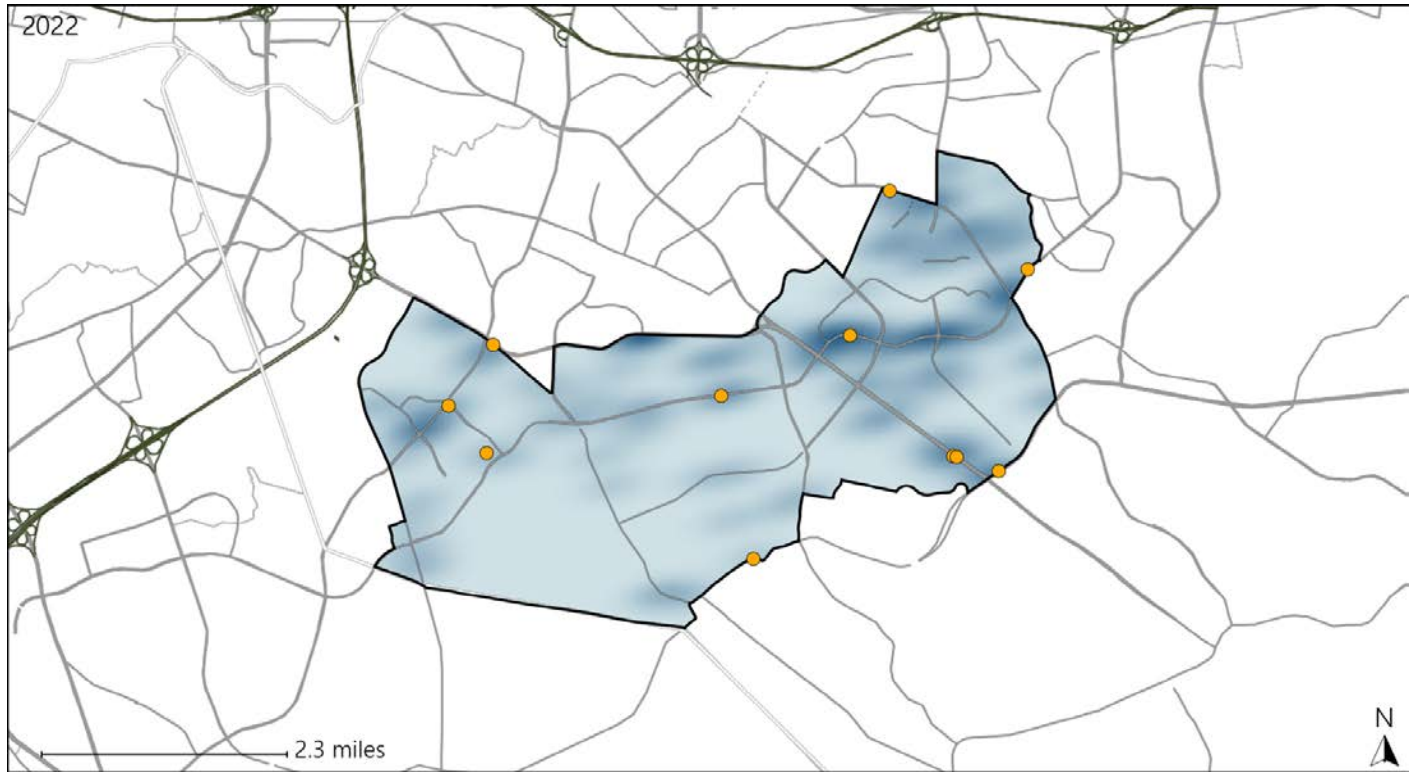


Available Crash Data - Calendar Year (CY)	CY 2019	CY 2020	CY 2021	CY 2022
Total Crashes	713	680	739	712
Fatal Crashes	1	2	1	3
Injury Crashes	246	198	274	221
Bicycle-Related Fatal Crashes	0	1	0	0
Percent of Bicycle-Related Fatal Crashes to Total Fatal Crashes	0%	50%	0%	0%
Bicycle-Related Injury Crashes	9	3	4	9
Percent of Bicycle-Related Injury Crashes to Total Injury Crashes	4%	2%	1%	4%

Virginia House District 96 Distracted Driving Crash Statistics

Report Generated May, 2023

	Count	Highest Time Period(s)	Highest Day(s)	Highest Month(s)
Fatal Crashes	0	-	-	-
Resulting Fatalities	0	-	-	-
Serious Injury Crashes	11	3:00pm - 5:59pm (45%)	Thursday • Wednesday (54%)	August • June (36%)



House District 96 Distracted Driving-Related Crashes

- | | |
|--------------------|------------------------|
| Interstate Crashes | Non-interstate Crashes |
| Fatal | Fatal |
| Serious Injury | Serious Injury |

The blue gradient represents the density of all distracted driving-related crashes.



Available Crash Data - Calendar Year (CY)	CY 2019	CY 2020	CY 2021	CY 2022
Total Crashes	713	680	739	712
Fatal Crashes	1	2	1	3
Injury Crashes	246	198	274	221
Distracted Driving-Related Fatal Crashes	0	0	0	0
Percent of Distracted Driving-Related Fatal Crashes to Total Fatal Crashes	0%	0%	0%	0%
Distracted Driving-Related Injury Crashes	48	40	45	44
Percent of Distracted Driving-Related Injury Crashes to Total Injury Crashes	20%	20%	16%	20%