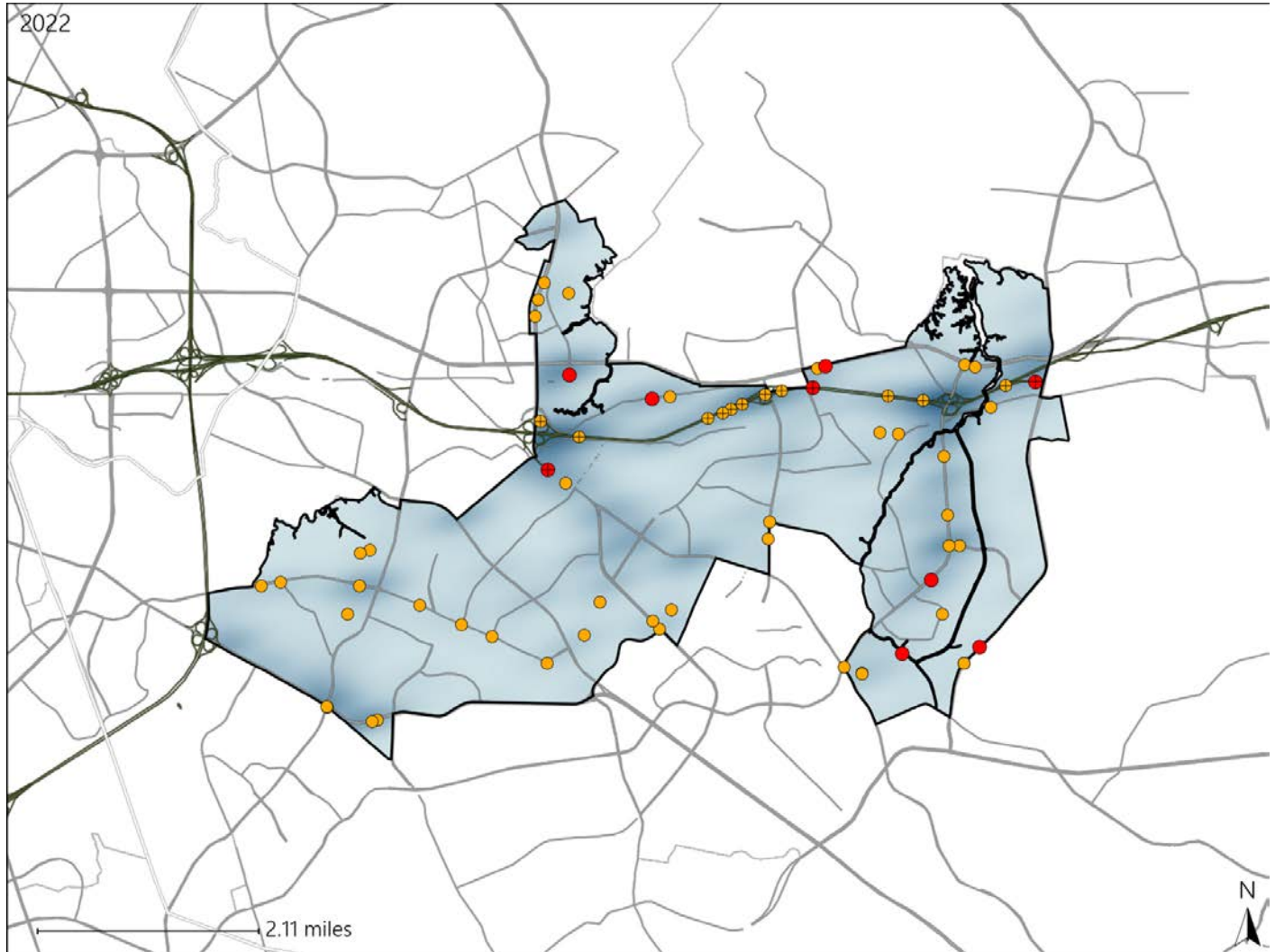


Virginia House District 97 Crash Statistics

Report Generated May, 2023

	Count	Highest Time Period(s)	Highest Day(s)	Highest Month(s)
Fatal Crashes	9	3:00pm - 5:59pm	Saturday	May
Resulting Fatalities	9	6:00pm - 8:59pm (66%)	(44%)	(22%)
Serious Injury Crashes	54	6:00am - 8:59am (20%)	Wednesday (19%)	October (17%)



House District 97 Crashes

Interstate Crashes

- Fatal
- Serious Injury

Non-interstate Crashes

- Fatal
- Serious Injury

The blue gradient represents the density of all crashes.

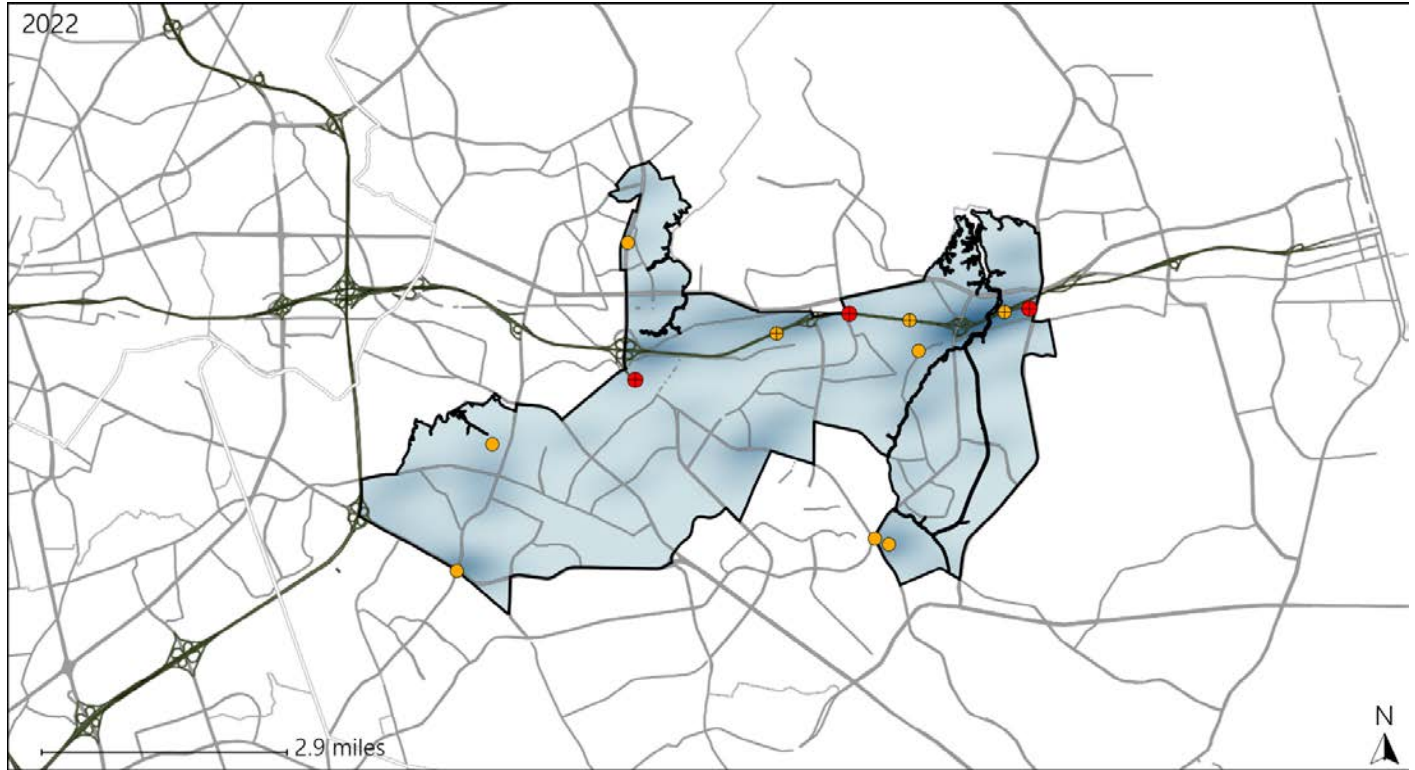


Available Crash Data - Calendar Year (CY)	CY 2019	CY 2020	CY 2021	CY 2022
Total Crashes	1622	1421	1542	1415
Fatal Crashes	6	3	11	9
Injury Crashes	517	442	499	450

Virginia House District 97 Alcohol Crash Statistics

Report Generated May, 2023

	Count	Highest Time Period(s)	Highest Day(s)	Highest Month(s)
Fatal Crashes	3	6:00pm - 8:59pm	Saturday	February • March
Resulting Fatalities	3	(67%)	(67%)	(66%)
Serious Injury Crashes	9	Midnight - 2:59am	Saturday • Sunday	March
		(44%)	(66%)	(22%)



House District 97 Alcohol-Related Crashes

Interstate Crashes

Non-interstate Crashes

- Fatal
- Serious Injury

- Fatal
- Serious Injury

The blue gradient represents the density of all alcohol-related crashes.

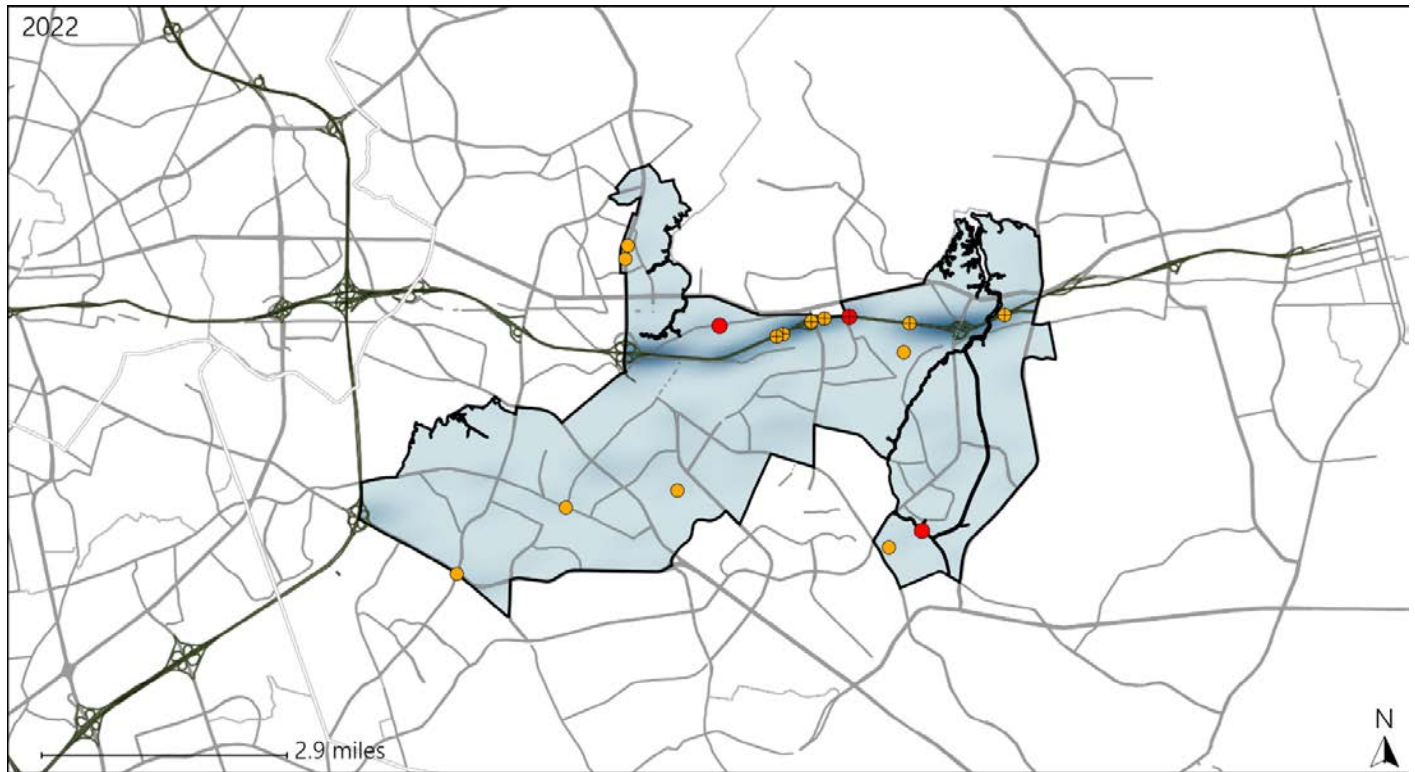


Available Crash Data - Calendar Year (CY)	CY 2019	CY 2020	CY 2021	CY 2022
Total Crashes	1622	1421	1542	1415
Fatal Crashes	6	3	11	9
Injury Crashes	517	442	499	450
Alcohol-Related Fatal Crashes	1	2	5	3
Percent of Alcohol-Related Fatal Crashes to Total Fatal Crashes	17%	67%	45%	33%
Alcohol-Related Injury Crashes	22	45	38	25
Percent of Alcohol-Related Injury Crashes to Total Injury Crashes	4%	10%	8%	6%

Virginia House District 97 Speed Crash Statistics

Report Generated May, 2023

	Count	Highest Time Period(s)	Highest Day(s)	Highest Month(s)
Fatal Crashes	3	6:00pm - 8:59pm	Saturday	May • November
Resulting Fatalities	3	(67%)	(67%)	(66%)
Serious Injury Crashes	13	6:00pm - 8:59pm 9:00pm - 11:59pm	Saturday	May
		(46%)	(38%)	(23%)



House District 97 Speed-Related Crashes

Interstate Crashes

Non-interstate Crashes

- Fatal
- ⊕ Serious Injury

- Fatal
- Serious Injury

The blue gradient represents the density of all speed-related crashes.

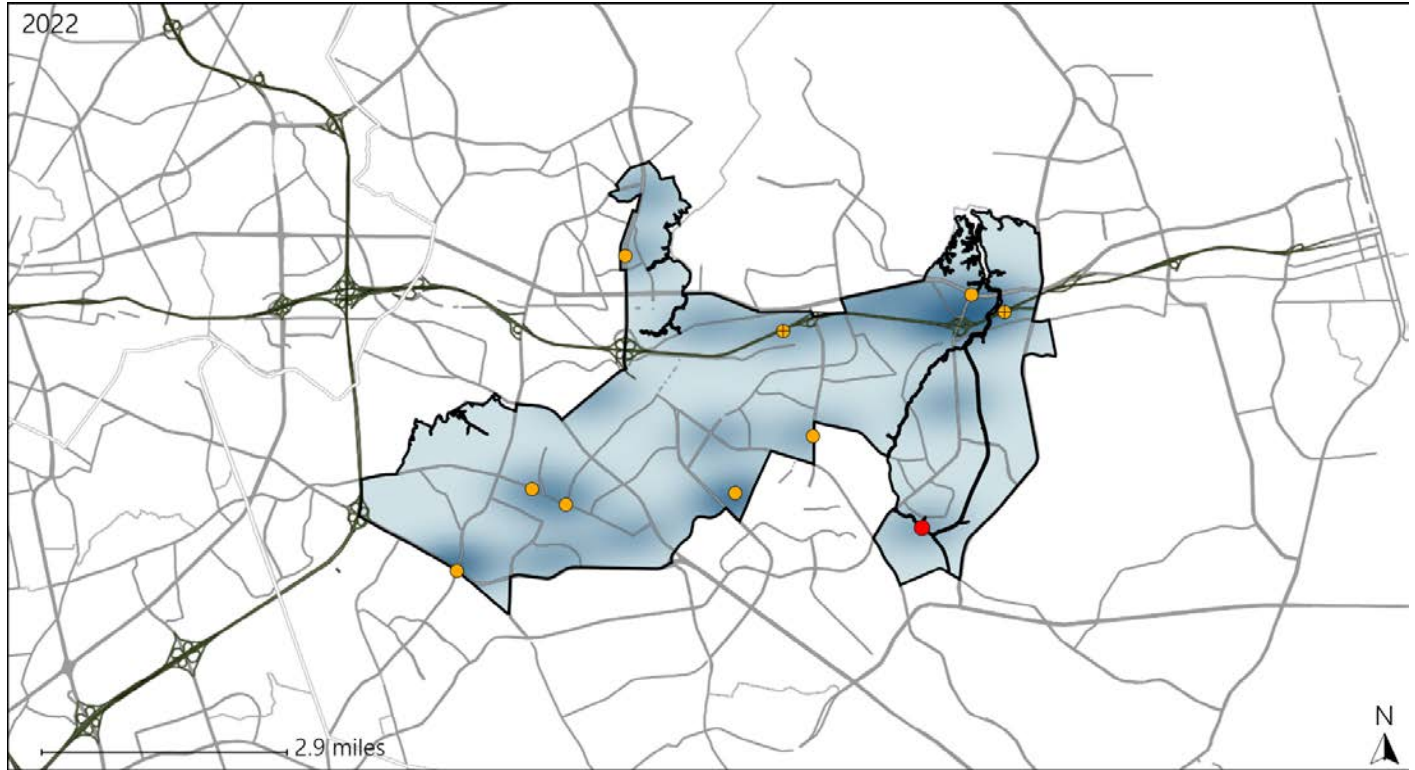


Available Crash Data - Calendar Year (CY)	CY 2019	CY 2020	CY 2021	CY 2022
Total Crashes	1622	1421	1542	1415
Fatal Crashes	6	3	11	9
Injury Crashes	517	442	499	450
Speed-Related Fatal Crashes	2	2	6	3
Percent of Speed-Related Fatal Crashes to Total Fatal Crashes	33%	67%	55%	33%
Speed-Related Injury Crashes	78	106	91	71
Percent of Speed-Related Injury Crashes to Total Injury Crashes	15%	24%	18%	16%

Virginia House District 97 Unrestrained Crash Statistics

Report Generated May, 2023

	Count	Highest Time Period(s)	Highest Day(s)	Highest Month(s)
Fatal Crashes	1	Noon - 2:59pm	Thursday	May
Unrestrained Fatalities	1	(100%)	(100%)	(100%)
Serious Injury Crashes	9	6:00am - 8:59am	Friday - Saturday	October
		(33%)	(66%)	(22%)



House District 97 Unrestrained-Related Crashes

- | | |
|--------------------|------------------------|
| Interstate Crashes | Non-interstate Crashes |
| Fatal | Fatal |
| Serious Injury | Serious Injury |

The blue gradient represents the density of all unrestrained-related crashes.

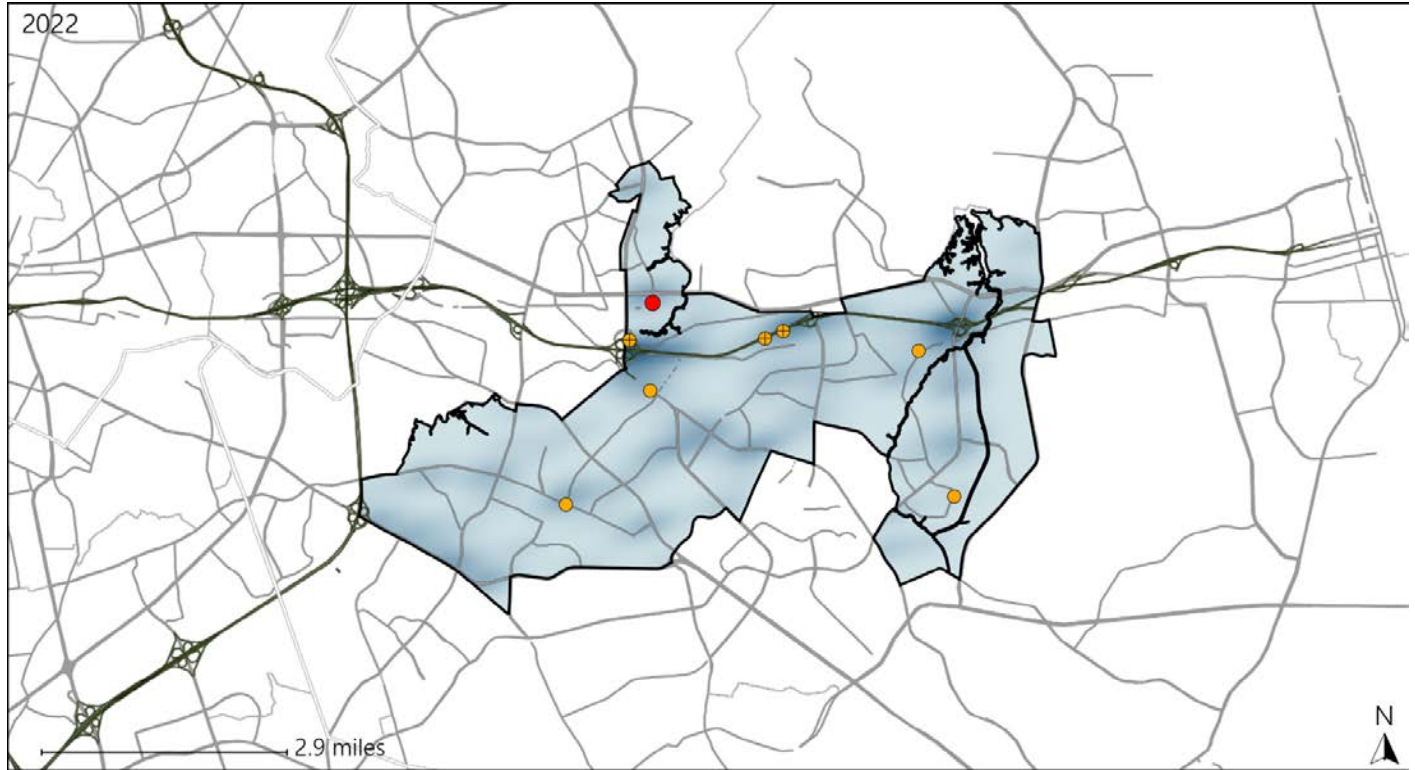


Available Crash Data - Calendar Year (CY)	CY 2019	CY 2020	CY 2021	CY 2022
Total Crashes	1622	1421	1542	1415
Fatalities	8	3	11	9
Injuries	835	769	844	770
Unrestrained Fatalities	3	0	2	1
Percent of Unrestrained Fatalities to Total Fatalities	38%	0%	18%	11%
Unrestrained Injuries	17	31	27	28
Percent of Unrestrained Injuries to Total Injuries	2%	4%	3%	4%

Virginia House District 97 Distracted Driving Crash Statistics

Report Generated May, 2023

	Count	Highest Time Period(s)	Highest Day(s)	Highest Month(s)
Fatal Crashes	1	3:00pm - 5:59pm	Monday	August
Resulting Fatalities	1	(100%)	(100%)	(100%)
Serious Injury Crashes	7	Midnight - 2:59am	Friday • Sunday	May • September
		(29%)	(58%)	(58%)



House District 97 Distracted Driving-Related Crashes

- | | |
|--------------------|------------------------|
| Interstate Crashes | Non-interstate Crashes |
| Fatal | Fatal |
| Serious Injury | Serious Injury |

The blue gradient represents the density of all distracted driving-related crashes.



Available Crash Data - Calendar Year (CY)	CY 2019	CY 2020	CY 2021	CY 2022
Total Crashes	1622	1421	1542	1415
Fatal Crashes	6	3	11	9
Injury Crashes	517	442	499	450
Distracted Driving-Related Fatal Crashes	0	1	1	1
Percent of Distracted Driving-Related Fatal Crashes to Total Fatal Crashes	0%	33%	9%	11%
Distracted Driving-Related Injury Crashes	100	75	98	62
Percent of Distracted Driving-Related Injury Crashes to Total Injury Crashes	19%	17%	20%	14%