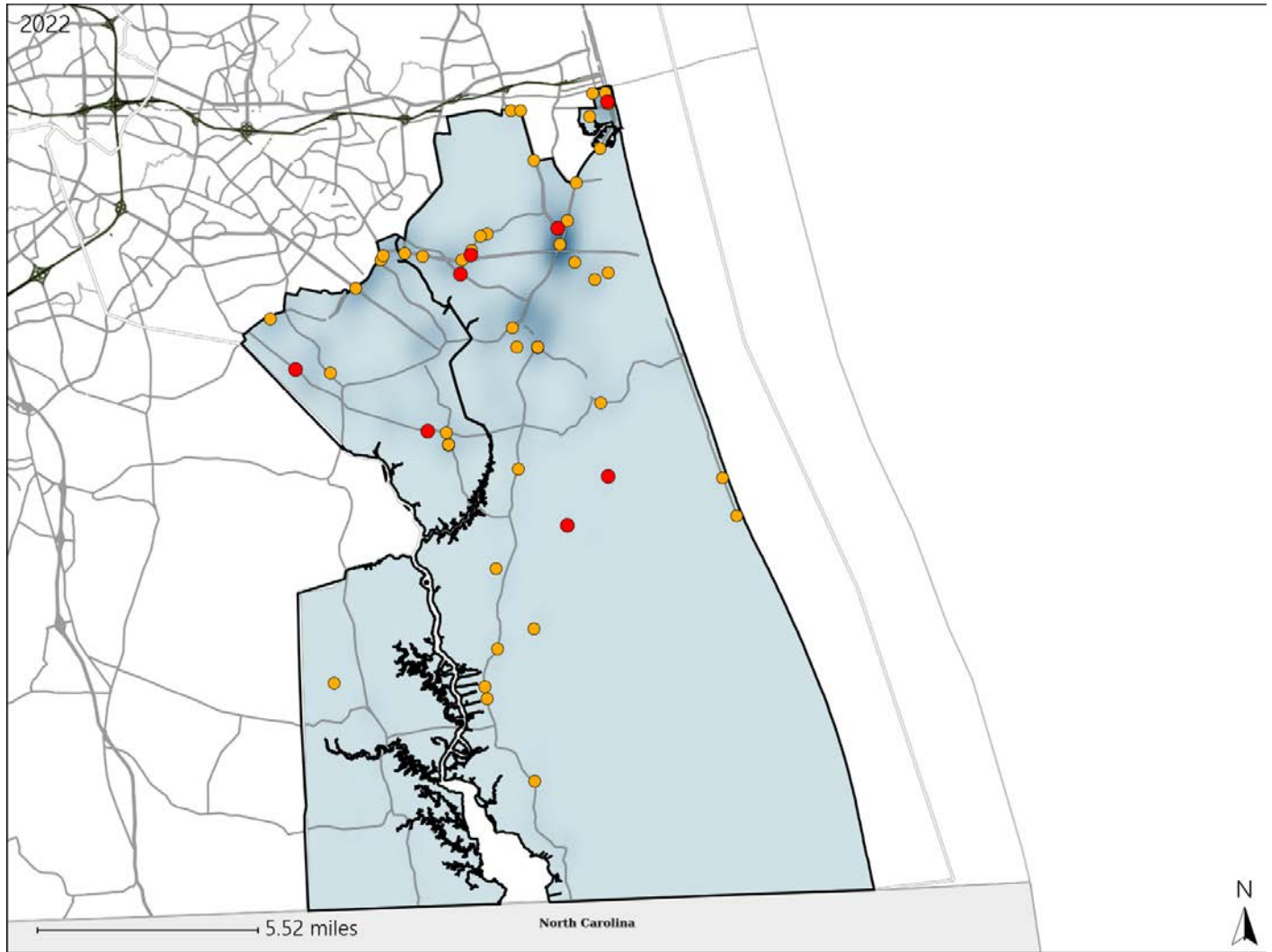


Virginia House District 98 Crash Statistics

Report Generated May, 2023

	Count	Highest Time Period(s)	Highest Day(s)	Highest Month(s)
Fatal Crashes	8	6:00pm - 8:59pm	Thursday	August • February
Resulting Fatalities	8	(38%)	(38%)	(24%)
Serious Injury Crashes	45	3:00pm - 5:59pm	Saturday	February
		(22%)	(27%)	(16%)



House District 98 Crashes

Interstate Crashes

- Fatal
- Serious Injury

Non-interstate Crashes

- Fatal
- Serious Injury

The blue gradient represents the density of all crashes.

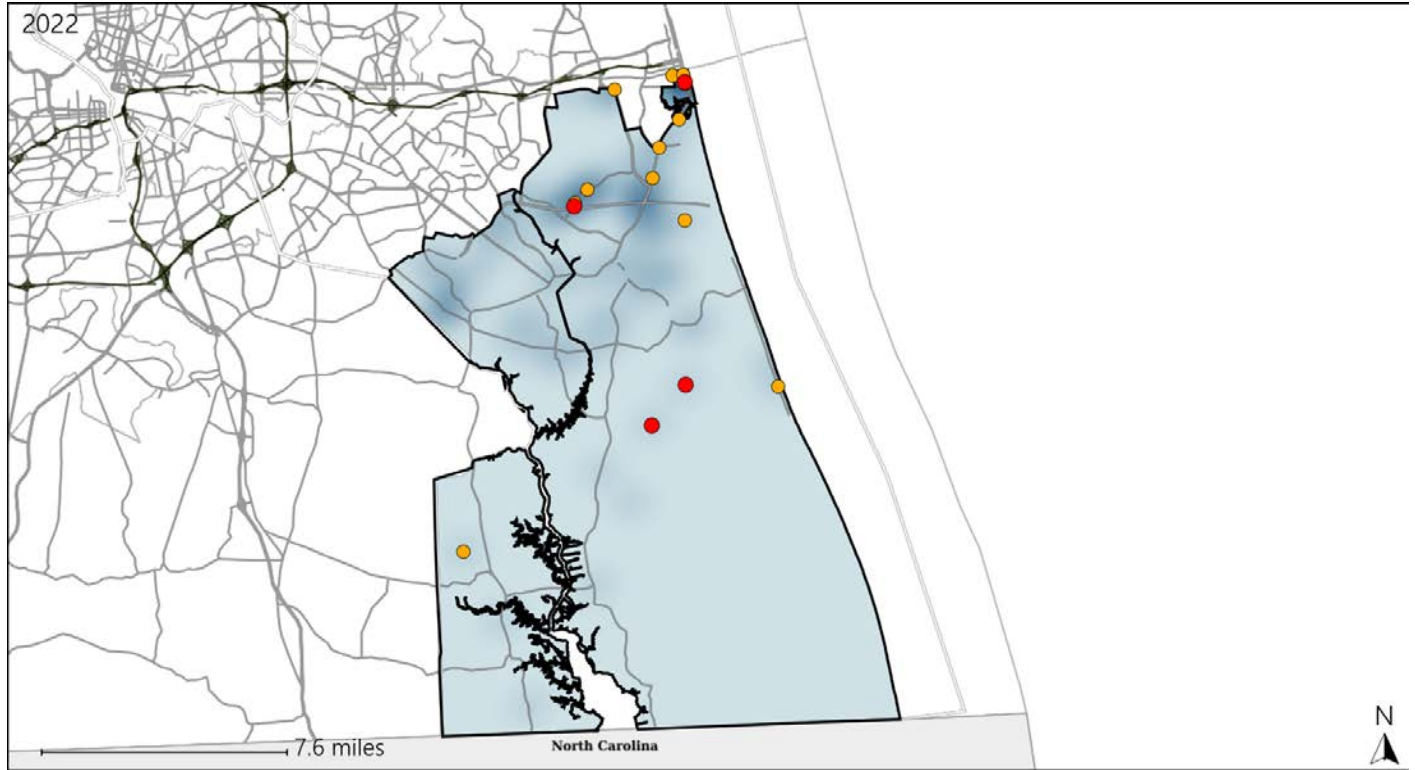


Available Crash Data - Calendar Year (CY)	CY 2019	CY 2020	CY 2021	CY 2022
Total Crashes	920	823	892	891
Fatal Crashes	2	6	8	8
Injury Crashes	304	238	252	267

Virginia House District 98 Alcohol Crash Statistics

Report Generated May, 2023

	Count	Highest Time Period(s)	Highest Day(s)	Highest Month(s)
Fatal Crashes	4	6:00pm - 8:59pm	Thursday	August • February
Resulting Fatalities	4	(50%)	(50%)	(50%)
Serious Injury Crashes	12	Midnight - 2:59am	Saturday • Thursday	February
		(42%)	(50%)	(33%)



House District 98 Alcohol-Related Crashes

Interstate Crashes Non-interstate Crashes
 ● Fatal ● Fatal
 ● Serious Injury ● Serious Injury

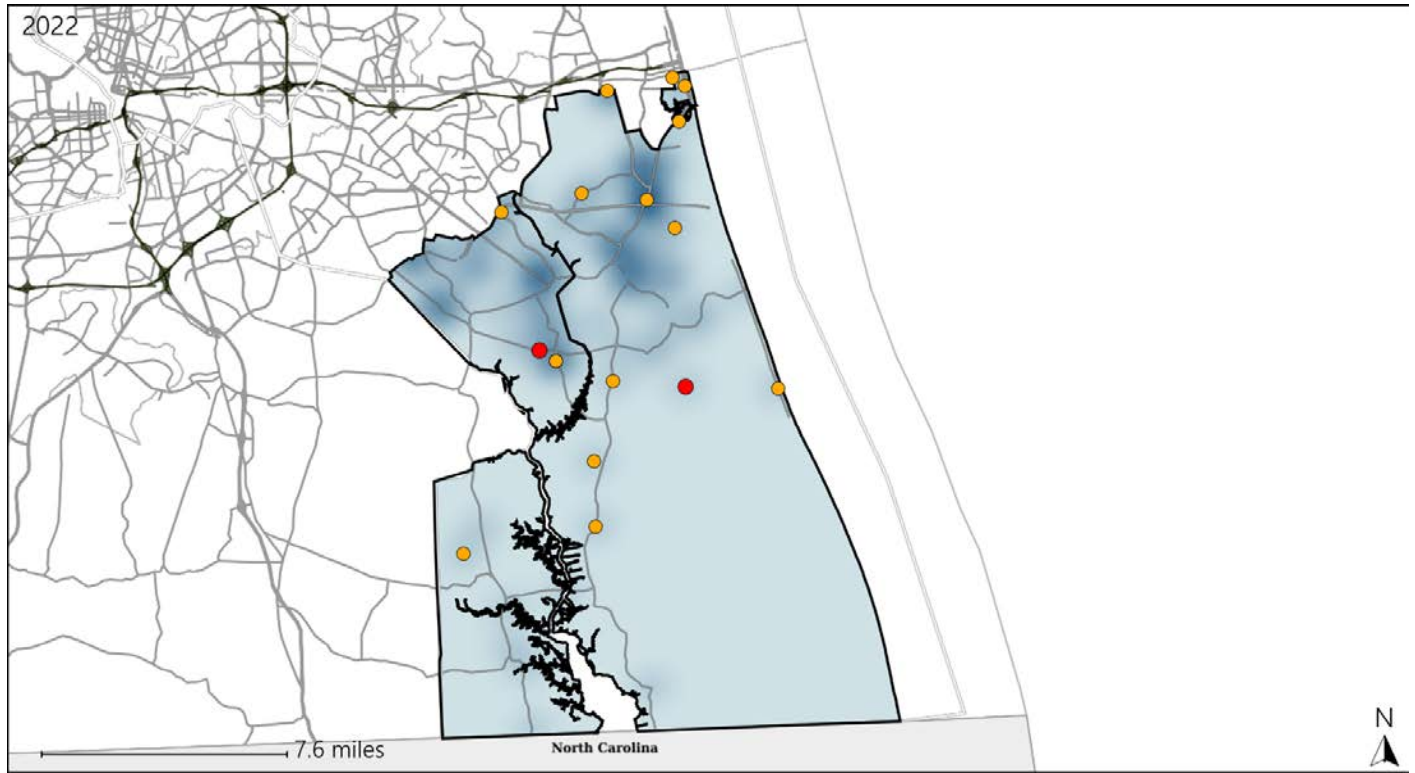
The blue gradient represents the density of all alcohol-related crashes.

Available Crash Data - Calendar Year (CY)	CY 2019	CY 2020	CY 2021	CY 2022
Total Crashes	920	823	892	891
Fatal Crashes	2	6	8	8
Injury Crashes	304	238	252	267
Alcohol-Related Fatal Crashes	0	4	4	4
Percent of Alcohol-Related Fatal Crashes to Total Fatal Crashes	0%	67%	50%	50%
Alcohol-Related Injury Crashes	34	32	31	32
Percent of Alcohol-Related Injury Crashes to Total Injury Crashes	11%	13%	12%	12%

Virginia House District 98 Speed Crash Statistics

Report Generated May, 2023

	Count	Highest Time Period(s)	Highest Day(s)	Highest Month(s)
Fatal Crashes	2	3:00pm - 5:59pm	Sunday • Thursday	August • November
Resulting Fatalities	2	9:00pm - 11:59pm (100%)	(100%)	(100%)
Serious Injury Crashes	15	9:00pm - 11:59pm Noon - 2:59pm (40%)	Friday (27%)	February (20%)



House District 98 Speed-Related Crashes

Interstate Crashes Non-interstate Crashes
 ● Fatal ● Fatal
 ⊕ Serious Injury ⊕ Serious Injury
 The blue gradient represents the density of all speed-related crashes.

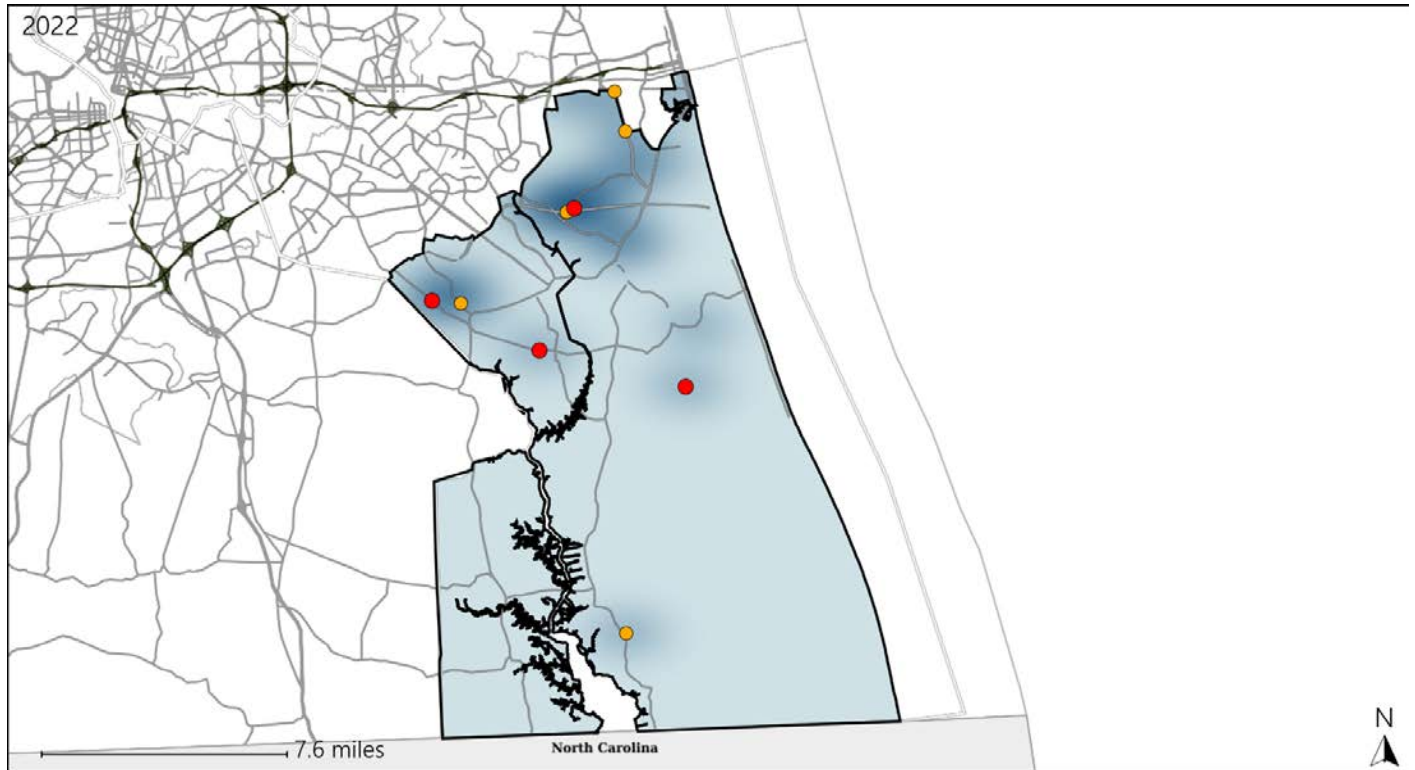


Available Crash Data - Calendar Year (CY)	CY 2019	CY 2020	CY 2021	CY 2022
Total Crashes	920	823	892	891
Fatal Crashes	2	6	8	8
Injury Crashes	304	238	252	267
Speed-Related Fatal Crashes	1	3	4	2
Percent of Speed-Related Fatal Crashes to Total Fatal Crashes	50%	50%	50%	25%
Speed-Related Injury Crashes	35	29	45	42
Percent of Speed-Related Injury Crashes to Total Injury Crashes	12%	12%	18%	16%

Virginia House District 98 Unrestrained Crash Statistics

Report Generated May, 2023

	Count	Highest Time Period(s)	Highest Day(s)	Highest Month(s)
Fatal Crashes	4	9:00pm - 11:59pm	Thursday	August + July
Unrestrained Fatalities	4	(50%)	(50%)	(50%)
Serious Injury Crashes	5	Midnight - 2:59am	Sunday	June
		(40%)	(60%)	(40%)



House District 98 Unrestrained-Related Crashes

Interstate Crashes

Non-interstate Crashes

- Fatal
- Serious Injury

- Fatal
- Serious Injury

The blue gradient represents the density of all unrestrained-related crashes.

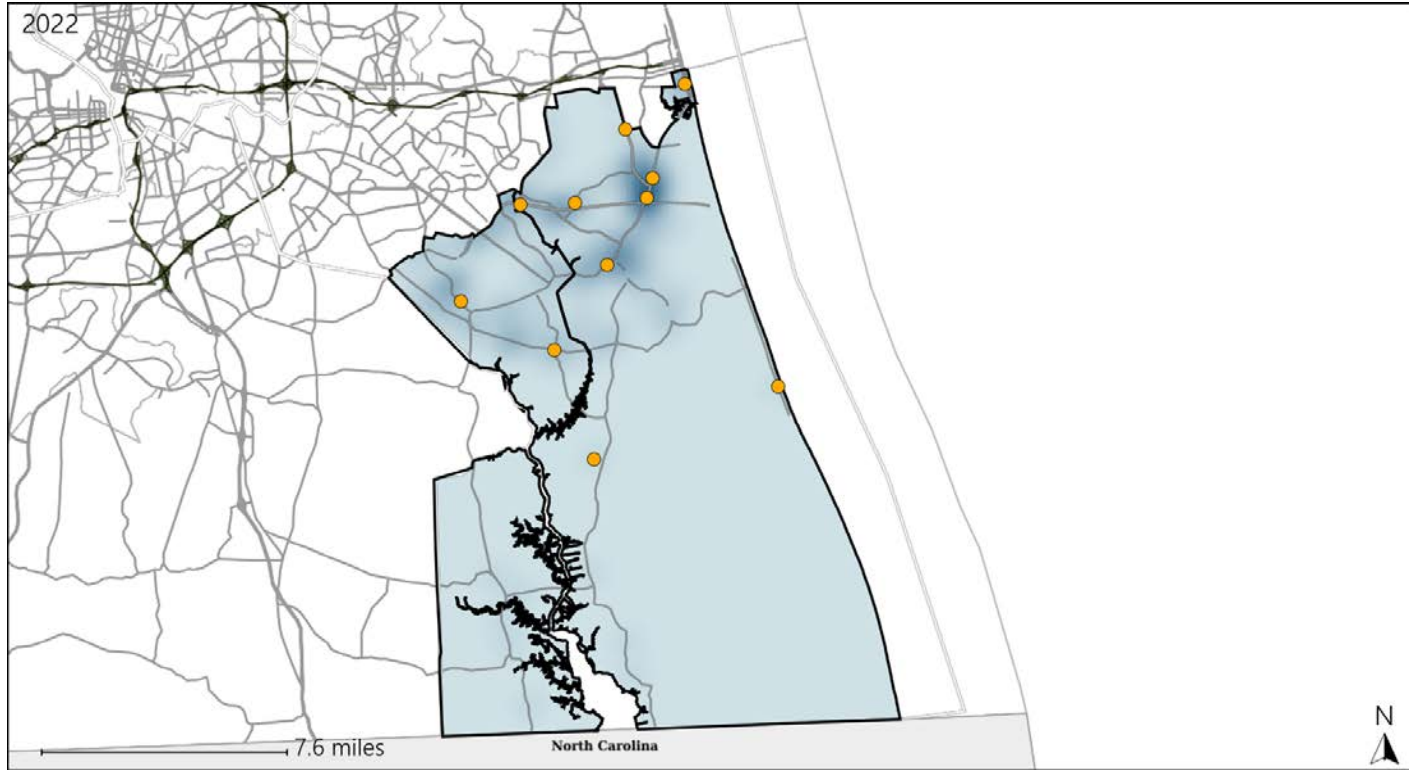


Available Crash Data - Calendar Year (CY)	CY 2019	CY 2020	CY 2021	CY 2022
Total Crashes	920	823	892	891
Fatalities	2	6	8	8
Injuries	499	360	374	423
Unrestrained Fatalities	0	0	1	4
Percent of Unrestrained Fatalities to Total Fatalities	0%	0%	13%	50%
Unrestrained Injuries	20	17	14	15
Percent of Unrestrained Injuries to Total Injuries	4%	5%	4%	4%

Virginia House District 98 Distracted Driving Crash Statistics

Report Generated May, 2023

	Count	Highest Time Period(s)	Highest Day(s)	Highest Month(s)
Fatal Crashes	0	-	-	-
Resulting Fatalities	0	-	-	-
Serious Injury Crashes	11	3:00pm - 5:59pm (27%)	Friday (45%)	September (27%)



House District 98 Distracted Driving-Related Crashes

- | | |
|--------------------|------------------------|
| Interstate Crashes | Non-interstate Crashes |
| Fatal | Fatal |
| Serious Injury | Serious Injury |

The blue gradient represents the density of all distracted driving-related crashes.



Available Crash Data - Calendar Year (CY)	CY 2019	CY 2020	CY 2021	CY 2022
Total Crashes	920	823	892	891
Fatal Crashes	2	6	8	8
Injury Crashes	304	238	252	267
Distracted Driving-Related Fatal Crashes	1	0	0	0
Percent of Distracted Driving-Related Fatal Crashes to Total Fatal Crashes	50%	0%	0%	0%
Distracted Driving-Related Injury Crashes	73	56	44	45
Percent of Distracted Driving-Related Injury Crashes to Total Injury Crashes	24%	24%	17%	17%