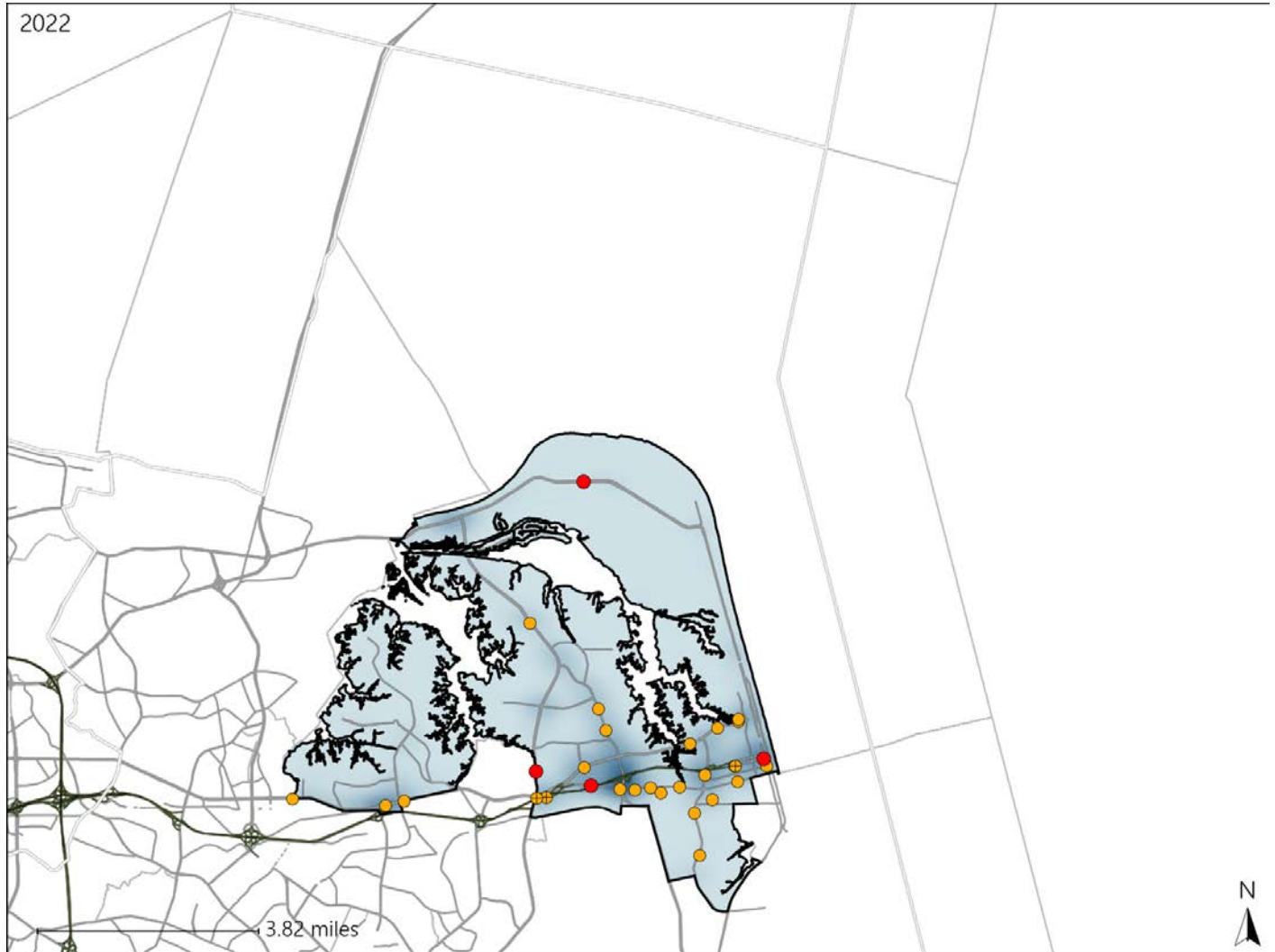


# Virginia House District 99 Crash Statistics

Report Generated May, 2023

	Count	Highest Time Period(s)	Highest Day(s)	Highest Month(s)
<b>Fatal Crashes</b>	<b>4</b>	3:00pm - 5:59pm	Wednesday	April • June
<b>Resulting Fatalities</b>	<b>4</b>	9:00am - 11:59am (50%)	(50%)	(50%)
<b>Serious Injury Crashes</b>	<b>26</b>	Noon - 2:59pm (19%)	Monday (35%)	March (23%)



### House District 99 Crashes

Interstate Crashes

- Fatal
- Serious Injury

Non-interstate Crashes

- Fatal
- Serious Injury

The blue gradient represents the density of all crashes.

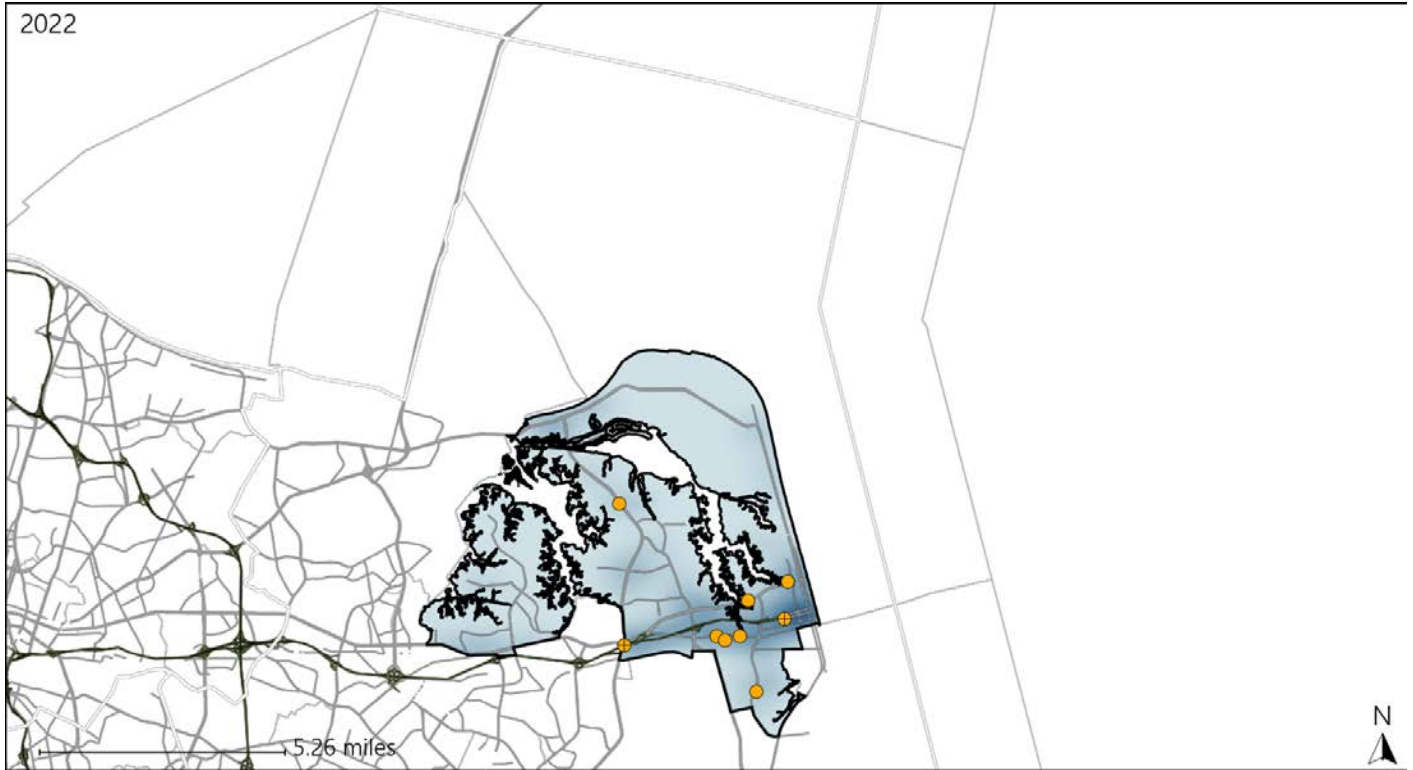


Available Crash Data - Calendar Year (CY)	CY 2019	CY 2020	CY 2021	CY 2022
Total Crashes	1086	972	1034	906
Fatal Crashes	4	6	5	4
Injury Crashes	338	321	290	259

# Virginia House District 99 Alcohol Crash Statistics

Report Generated May, 2023

	Count	Highest Time Period(s)	Highest Day(s)	Highest Month(s)
<b>Fatal Crashes</b>	<b>0</b>	-	-	-
<b>Resulting Fatalities</b>	<b>0</b>	-	-	-
<b>Serious Injury Crashes</b>	<b>9</b>	<b>9:00pm - 11:59pm</b> (33%)	<b>Monday - Saturday</b> (66%)	<b>March</b> (33%)



### House District 99 Alcohol-Related Crashes

Interstate Crashes                      Non-interstate Crashes  
 ● Fatal                                      ● Fatal  
 ⊕ Serious Injury                          ⊕ Serious Injury

The blue gradient represents the density of all alcohol-related crashes.

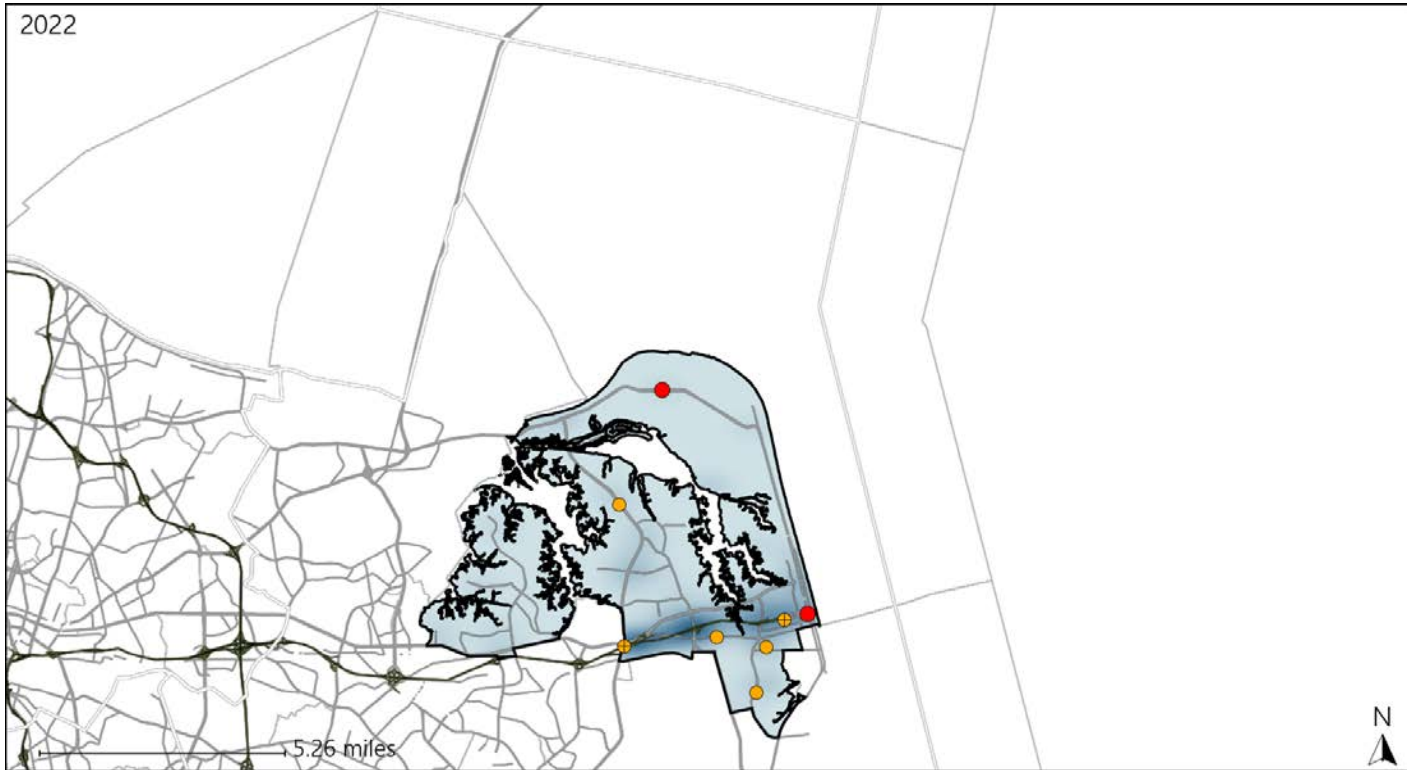


Available Crash Data - Calendar Year (CY)	CY 2019	CY 2020	CY 2021	CY 2022
Total Crashes	1086	972	1034	906
Fatal Crashes	4	6	5	4
Injury Crashes	338	321	290	259
Alcohol-Related Fatal Crashes	0	4	2	0
Percent of Alcohol-Related Fatal Crashes to Total Fatal Crashes	0%	67%	40%	0%
Alcohol-Related Injury Crashes	31	41	36	28
Percent of Alcohol-Related Injury Crashes to Total Injury Crashes	9%	13%	12%	11%

# Virginia House District 99 Speed Crash Statistics

Report Generated May, 2023

	Count	Highest Time Period(s)	Highest Day(s)	Highest Month(s)
<b>Fatal Crashes</b>	<b>2</b>	<b>9:00pm - 11:59pm</b>	<b>Friday • Monday</b>	<b>April • November</b>
<b>Resulting Fatalities</b>	<b>2</b>	<b>Noon - 2:59pm</b> (100%)	<b>(100%)</b>	<b>(100%)</b>
<b>Serious Injury Crashes</b>	<b>6</b>	<b>6:00pm - 8:59pm</b> (50%)	<b>Saturday</b> (50%)	<b>April • December</b> (34%)



### House District 99 Speed-Related Crashes

Interstate Crashes                      Non-interstate Crashes  
 ● Fatal                                      ● Fatal  
 ⊕ Serious Injury                          ⊕ Serious Injury  
 The blue gradient represents the density of all speed-related crashes.

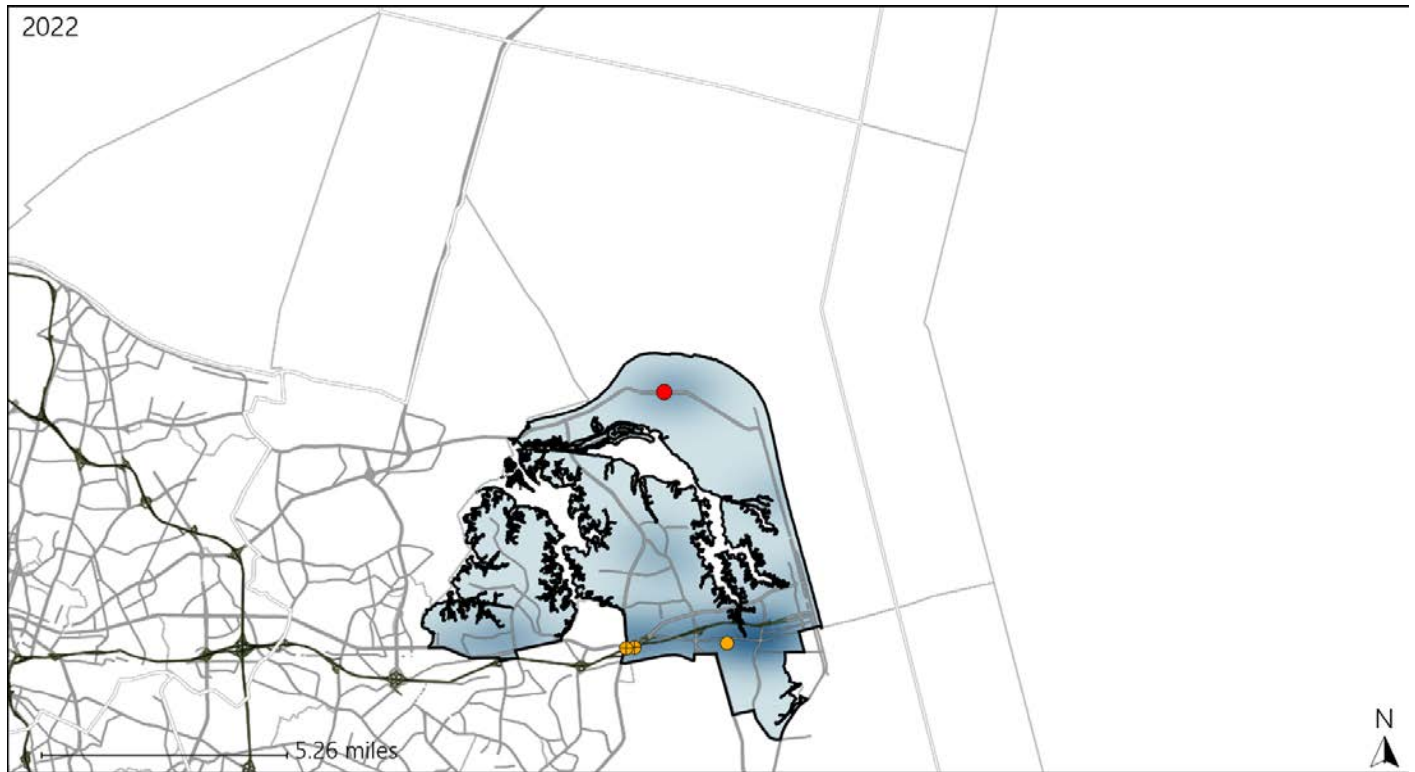


Available Crash Data - Calendar Year (CY)	CY 2019	CY 2020	CY 2021	CY 2022
Total Crashes	1086	972	1034	906
Fatal Crashes	4	6	5	4
Injury Crashes	338	321	290	259
Speed-Related Fatal Crashes	2	2	4	2
Percent of Speed-Related Fatal Crashes to Total Fatal Crashes	50%	33%	80%	50%
Speed-Related Injury Crashes	41	52	57	31
Percent of Speed-Related Injury Crashes to Total Injury Crashes	12%	16%	20%	12%

# Virginia House District 99 Unrestrained Crash Statistics

Report Generated May, 2023

	Count	Highest Time Period(s)	Highest Day(s)	Highest Month(s)
<b>Fatal Crashes</b>	<b>1</b>	<b>Noon - 2:59pm</b>	<b>Monday</b>	<b>November</b>
<b>Unrestrained Fatalities</b>	<b>1</b>	<b>(100%)</b>	<b>(100%)</b>	<b>(100%)</b>
<b>Serious Injury Crashes</b>	<b>3</b>	<b>6:00pm - 8:59pm</b> <b>9:00pm - 11:59pm</b>	<b>Monday</b>	<b>June • March</b>
		<b>(66%)</b>	<b>(67%)</b>	<b>(66%)</b>



### House District 99 Unrestrained-Related Crashes

- |                    |                        |
|--------------------|------------------------|
| Interstate Crashes | Non-interstate Crashes |
| Fatal              | Fatal                  |
| Serious Injury     | Serious Injury         |

The blue gradient represents the density of all unrestrained-related crashes.

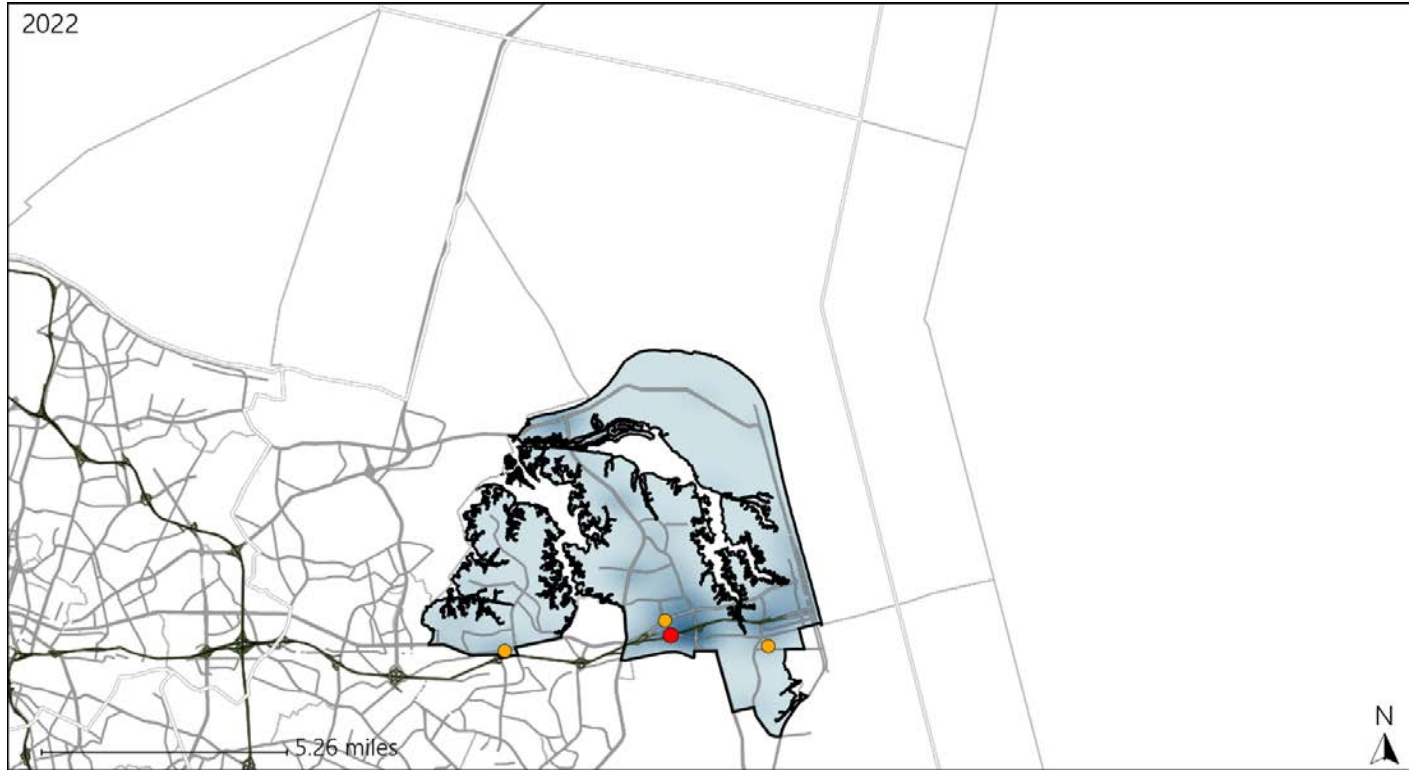


Available Crash Data - Calendar Year (CY)	CY 2019	CY 2020	CY 2021	CY 2022
<b>Total Crashes</b>	<b>1086</b>	<b>972</b>	<b>1034</b>	<b>906</b>
<b>Fatalities</b>	<b>4</b>	<b>6</b>	<b>5</b>	<b>4</b>
<b>Injuries</b>	<b>545</b>	<b>527</b>	<b>461</b>	<b>402</b>
<b>Unrestrained Fatalities</b>	<b>1</b>	<b>1</b>	<b>1</b>	<b>1</b>
<b>Percent of Unrestrained Fatalities to Total Fatalities</b>	<b>25%</b>	<b>17%</b>	<b>20%</b>	<b>25%</b>
<b>Unrestrained Injuries</b>	<b>17</b>	<b>27</b>	<b>20</b>	<b>20</b>
<b>Percent of Unrestrained Injuries to Total Injuries</b>	<b>3%</b>	<b>5%</b>	<b>4%</b>	<b>5%</b>

# Virginia House District 99 Distracted Driving Crash Statistics

Report Generated May, 2023

	Count	Highest Time Period(s)	Highest Day(s)	Highest Month(s)
<b>Fatal Crashes</b>	<b>1</b>	<b>9:00am - 11:59am</b>	<b>Wednesday</b>	<b>June</b>
<b>Resulting Fatalities</b>	<b>1</b>	<b>(100%)</b>	<b>(100%)</b>	<b>(100%)</b>
<b>Serious Injury Crashes</b>	<b>3</b>	<b>Noon - 2:59pm</b>	<b>Monday</b>	<b>April</b>
		<b>(67%)</b>	<b>(67%)</b>	<b>(67%)</b>



## House District 99 Distracted Driving-Related Crashes

- |                    |                        |
|--------------------|------------------------|
| Interstate Crashes | Non-interstate Crashes |
| Fatal              | Fatal                  |
| Serious Injury     | Serious Injury         |

The blue gradient represents the density of all distracted driving-related crashes.



Available Crash Data - Calendar Year (CY)	CY 2019	CY 2020	CY 2021	CY 2022
Total Crashes	1086	972	1034	906
Fatal Crashes	4	6	5	4
Injury Crashes	338	321	290	259
Distracted Driving-Related Fatal Crashes	1	1	0	1
Percent of Distracted Driving-Related Fatal Crashes to Total Fatal Crashes	25%	17%	0%	25%
Distracted Driving-Related Injury Crashes	45	60	43	38
Percent of Distracted Driving-Related Injury Crashes to Total Injury Crashes	13%	19%	15%	15%