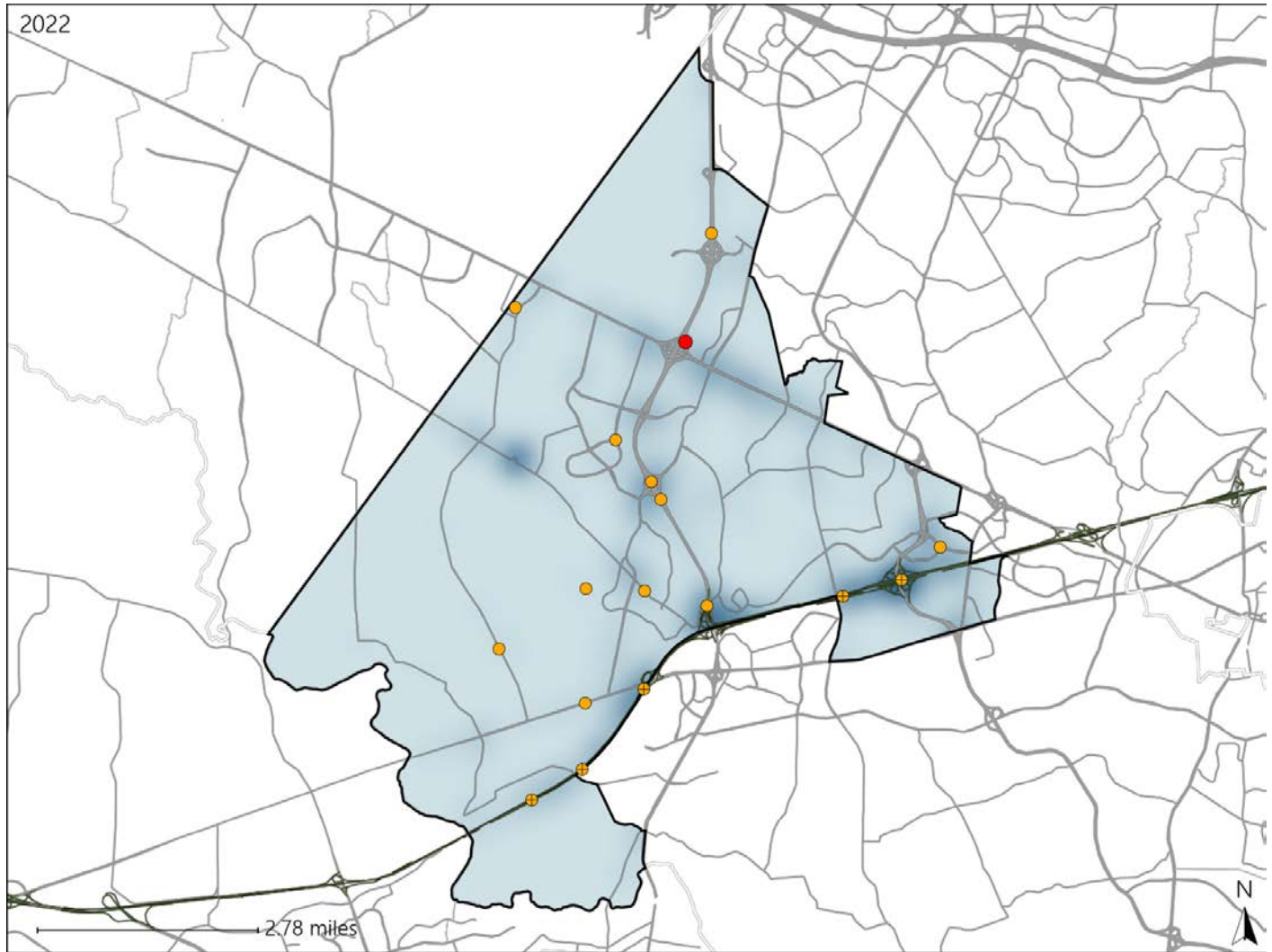


Virginia House District 9 Crash Statistics

Report Generated May, 2023

	Count	Highest Time Period(s)	Highest Day(s)	Highest Month(s)
Fatal Crashes	1	9:00am - 11:59am	Wednesday	October
Resulting Fatalities	1	(100%)	(100%)	(100%)
Serious Injury Crashes	16	9:00pm - 11:59pm	Friday	December - March
		(25%)	(25%)	(38%)



House District 9 Crashes

Interstate Crashes

- Fatal
- Serious Injury

Non-interstate Crashes

- Fatal
- Serious Injury

The blue gradient represents the density of all crashes.

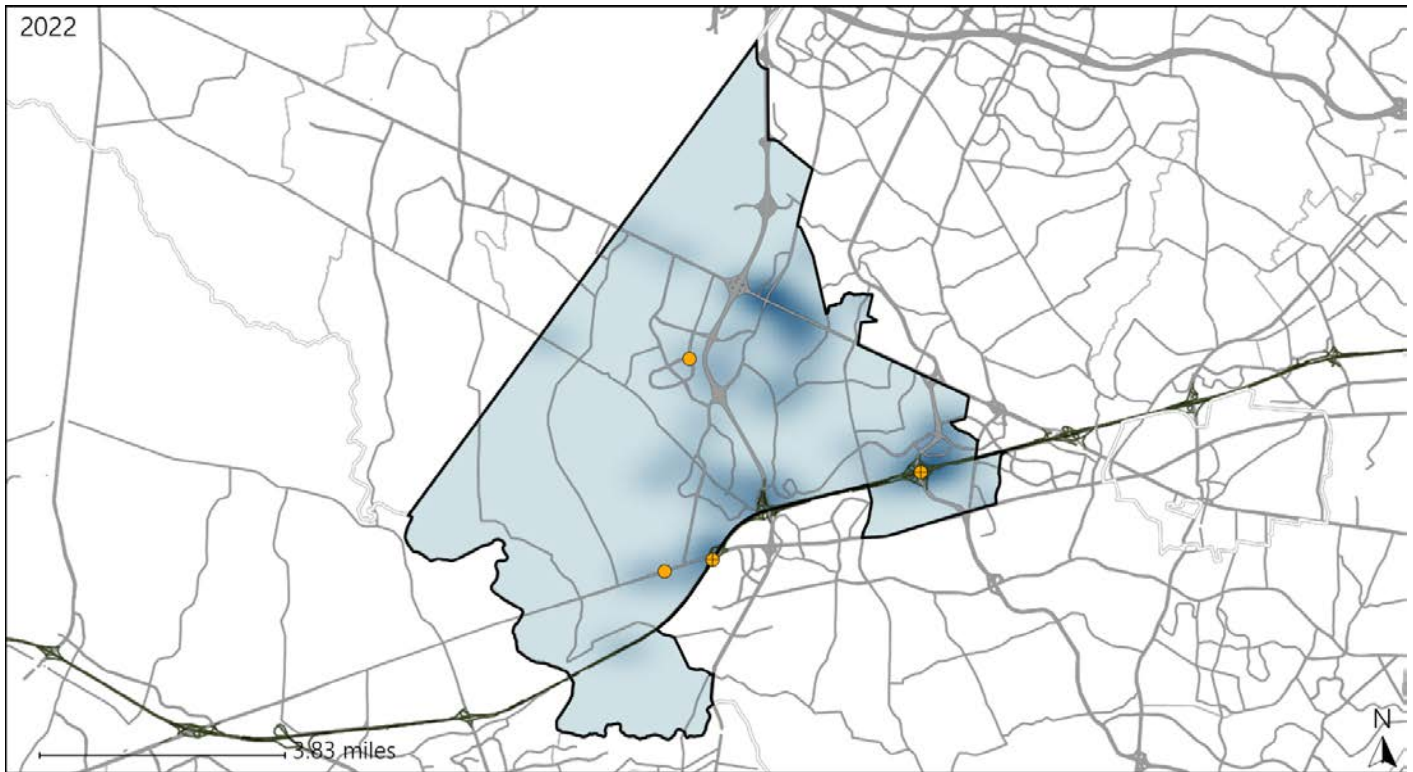


Available Crash Data - Calendar Year (CY)	CY 2019	CY 2020	CY 2021	CY 2022
Total Crashes	1399	919	1055	1148
Fatal Crashes	8	4	4	1
Injury Crashes	394	229	281	247

Virginia House District 9 Alcohol Crash Statistics

Report Generated May, 2023

	Count	Highest Time Period(s)	Highest Day(s)	Highest Month(s)
Fatal Crashes	0	-	-	-
Resulting Fatalities	0	-	-	-
Serious Injury Crashes	4	3:00am - 5:59am 9:00pm - 11:59pm (100%)	Sunday (50%)	August • December (50%)



House District 9 Alcohol-Related Crashes

Interstate Crashes Non-interstate Crashes
 ● Fatal ● Fatal
 ⊕ Serious Injury ⊕ Serious Injury

The blue gradient represents the density of all alcohol-related crashes.

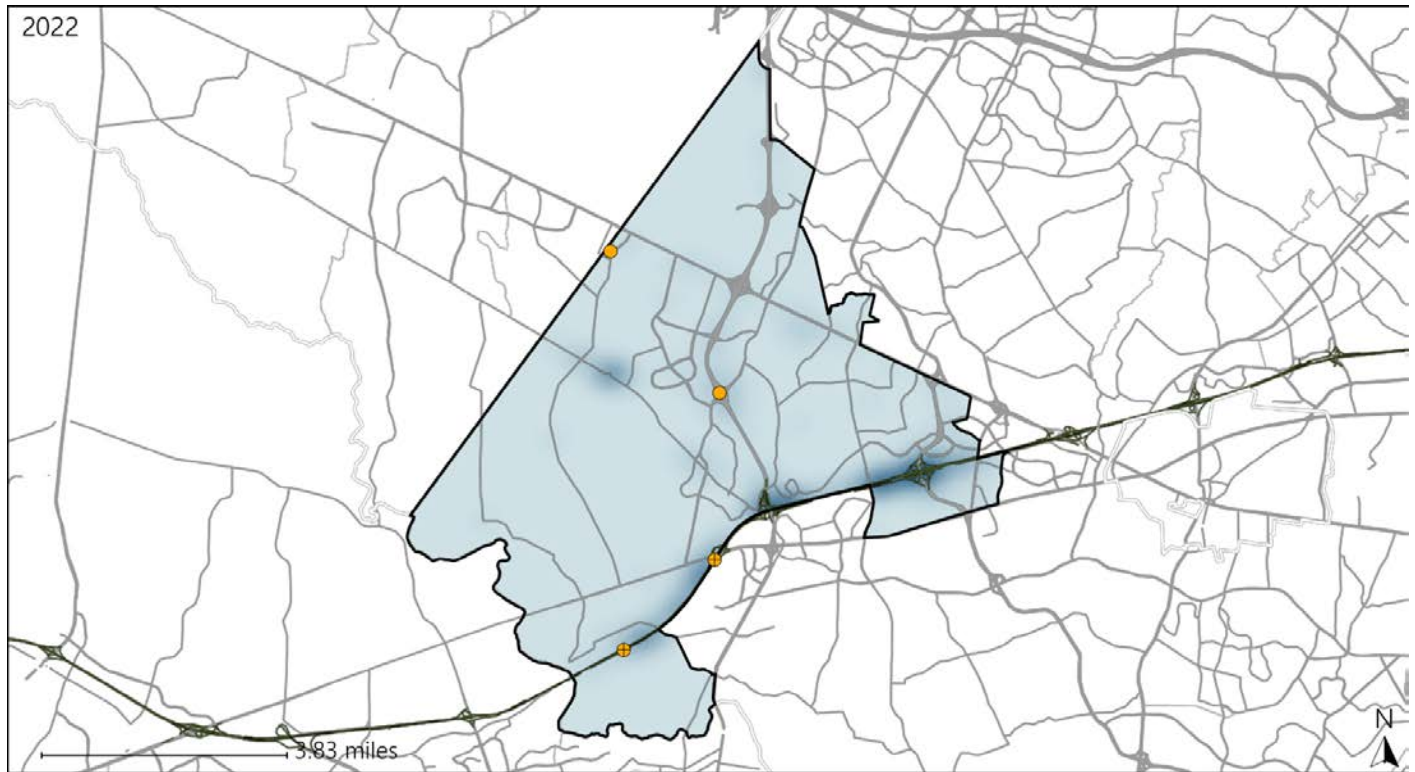


Available Crash Data - Calendar Year (CY)	CY 2019	CY 2020	CY 2021	CY 2022
Total Crashes	1399	919	1055	1148
Fatal Crashes	8	4	4	1
Injury Crashes	394	229	281	247
Alcohol-Related Fatal Crashes	3	2	1	0
Percent of Alcohol-Related Fatal Crashes to Total Fatal Crashes	38%	50%	25%	0%
Alcohol-Related Injury Crashes	26	14	23	20
Percent of Alcohol-Related Injury Crashes to Total Injury Crashes	7%	6%	8%	8%

Virginia House District 9 Speed Crash Statistics

Report Generated May, 2023

	Count	Highest Time Period(s)	Highest Day(s)	Highest Month(s)
Fatal Crashes	0	-	-	-
Resulting Fatalities	0	-	-	-
Serious Injury Crashes	4	3:00pm - 5:59pm 9:00pm - 11:59pm (100%)	Friday (50%)	December (50%)



House District 9 Speed-Related Crashes

Interstate Crashes Non-interstate Crashes
 ● Fatal ● Fatal
 ⊕ Serious Injury ⊕ Serious Injury

The blue gradient represents the density of all speed-related crashes.

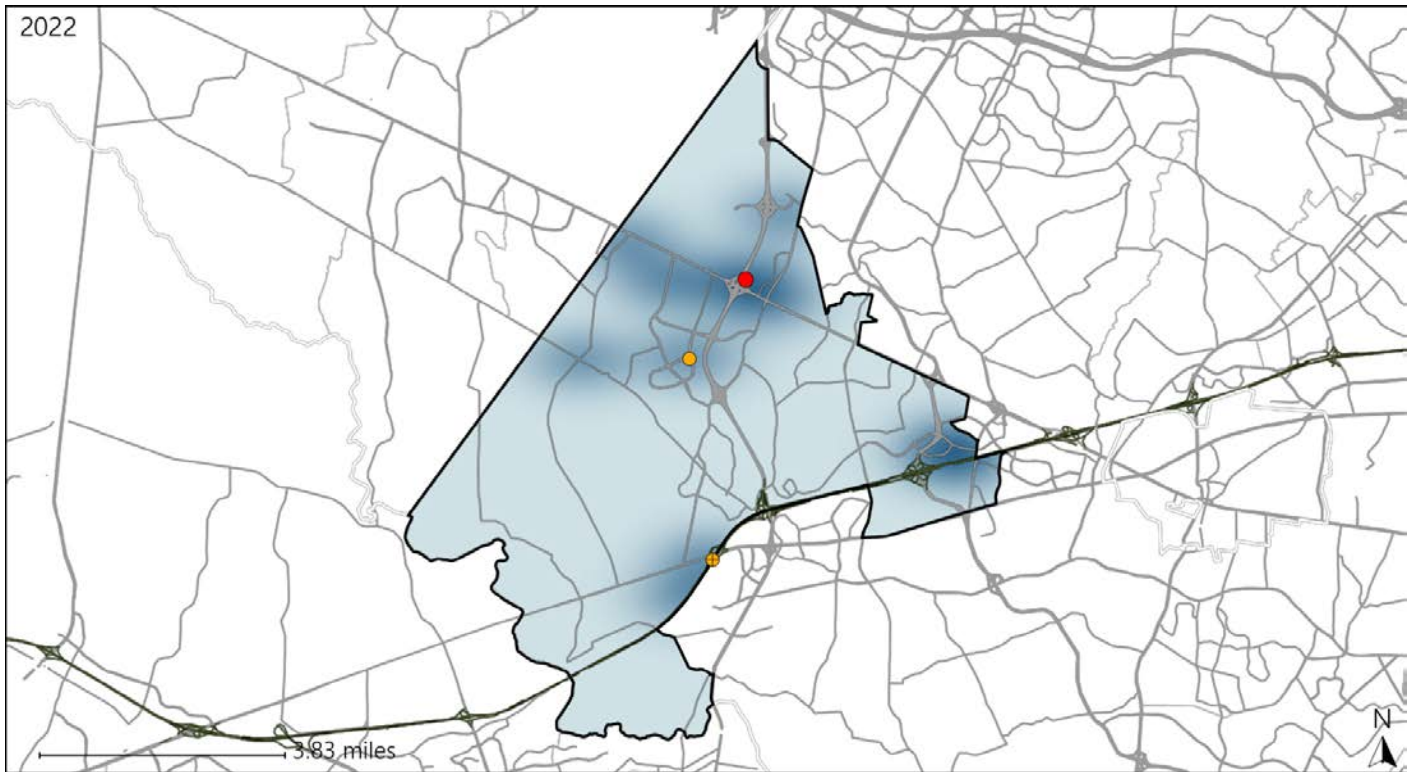


Available Crash Data - Calendar Year (CY)	CY 2019	CY 2020	CY 2021	CY 2022
Total Crashes	1399	919	1055	1148
Fatal Crashes	8	4	4	1
Injury Crashes	394	229	281	247
Speed-Related Fatal Crashes	4	3	3	0
Percent of Speed-Related Fatal Crashes to Total Fatal Crashes	50%	75%	75%	0%
Speed-Related Injury Crashes	55	51	67	48
Percent of Speed-Related Injury Crashes to Total Injury Crashes	14%	22%	24%	19%

Virginia House District 9 Unrestrained Crash Statistics

Report Generated May, 2023

	Count	Highest Time Period(s)	Highest Day(s)	Highest Month(s)
Fatal Crashes	1	9:00am - 11:59am	Wednesday	October
Unrestrained Fatalities	1	(100%)	(100%)	(100%)
Serious Injury Crashes	2	3:00am - 5:59am 9:00pm - 11:59pm	Friday • Sunday	August • December
		(100%)	(100%)	(100%)



House District 9 Unrestrained-Related Crashes

- | | |
|--|--|
| Interstate Crashes | Non-interstate Crashes |
| ● Fatal | ● Fatal |
| ⊕ Serious Injury | ⊕ Serious Injury |

The blue gradient represents the density of all unrestrained-related crashes.

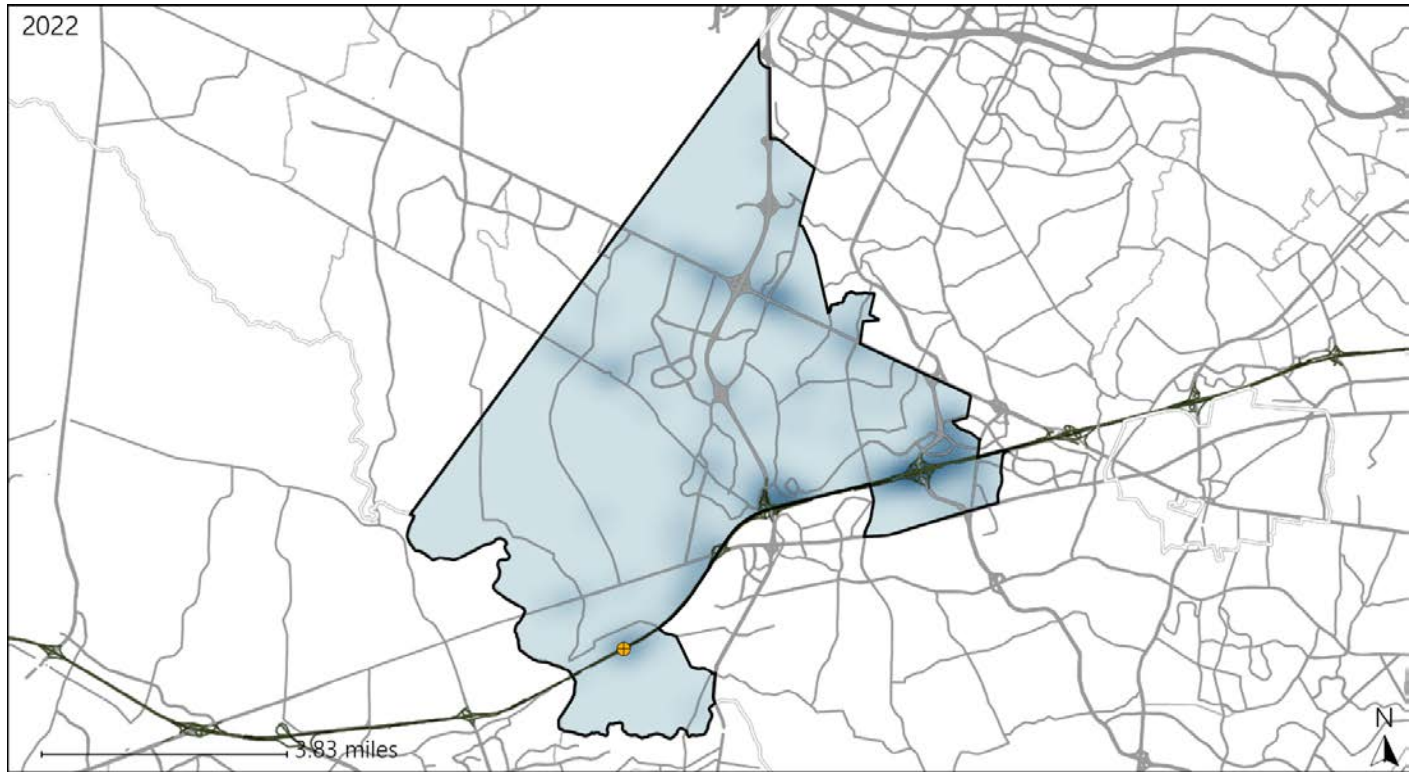


Available Crash Data - Calendar Year (CY)	CY 2019	CY 2020	CY 2021	CY 2022
Total Crashes	1399	919	1055	1148
Fatalities	9	4	4	1
Injuries	604	342	448	375
Unrestrained Fatalities	0	0	1	1
Percent of Unrestrained Fatalities to Total Fatalities	0%	0%	25%	100%
Unrestrained Injuries	5	9	8	10
Percent of Unrestrained Injuries to Total Injuries	1%	3%	2%	3%

Virginia House District 9 Distracted Driving Crash Statistics

Report Generated May, 2023

	Count	Highest Time Period(s)	Highest Day(s)	Highest Month(s)
Fatal Crashes	0	-	-	-
Resulting Fatalities	0	-	-	-
Serious Injury Crashes	1	9:00pm - 11:59pm (100%)	Wednesday (100%)	November (100%)



House District 9 Distracted Driving-Related Crashes

- | | |
|--------------------|------------------------|
| Interstate Crashes | Non-interstate Crashes |
| Fatal | Fatal |
| Serious Injury | Serious Injury |

The blue gradient represents the density of all distracted driving-related crashes.



Available Crash Data - Calendar Year (CY)	CY 2019	CY 2020	CY 2021	CY 2022
Total Crashes	1399	919	1055	1148
Fatal Crashes	8	4	4	1
Injury Crashes	394	229	281	247
Distracted Driving-Related Fatal Crashes	2	2	0	0
Percent of Distracted Driving-Related Fatal Crashes to Total Fatal Crashes	25%	50%	0%	0%
Distracted Driving-Related Injury Crashes	88	41	49	35
Percent of Distracted Driving-Related Injury Crashes to Total Injury Crashes	22%	18%	17%	14%