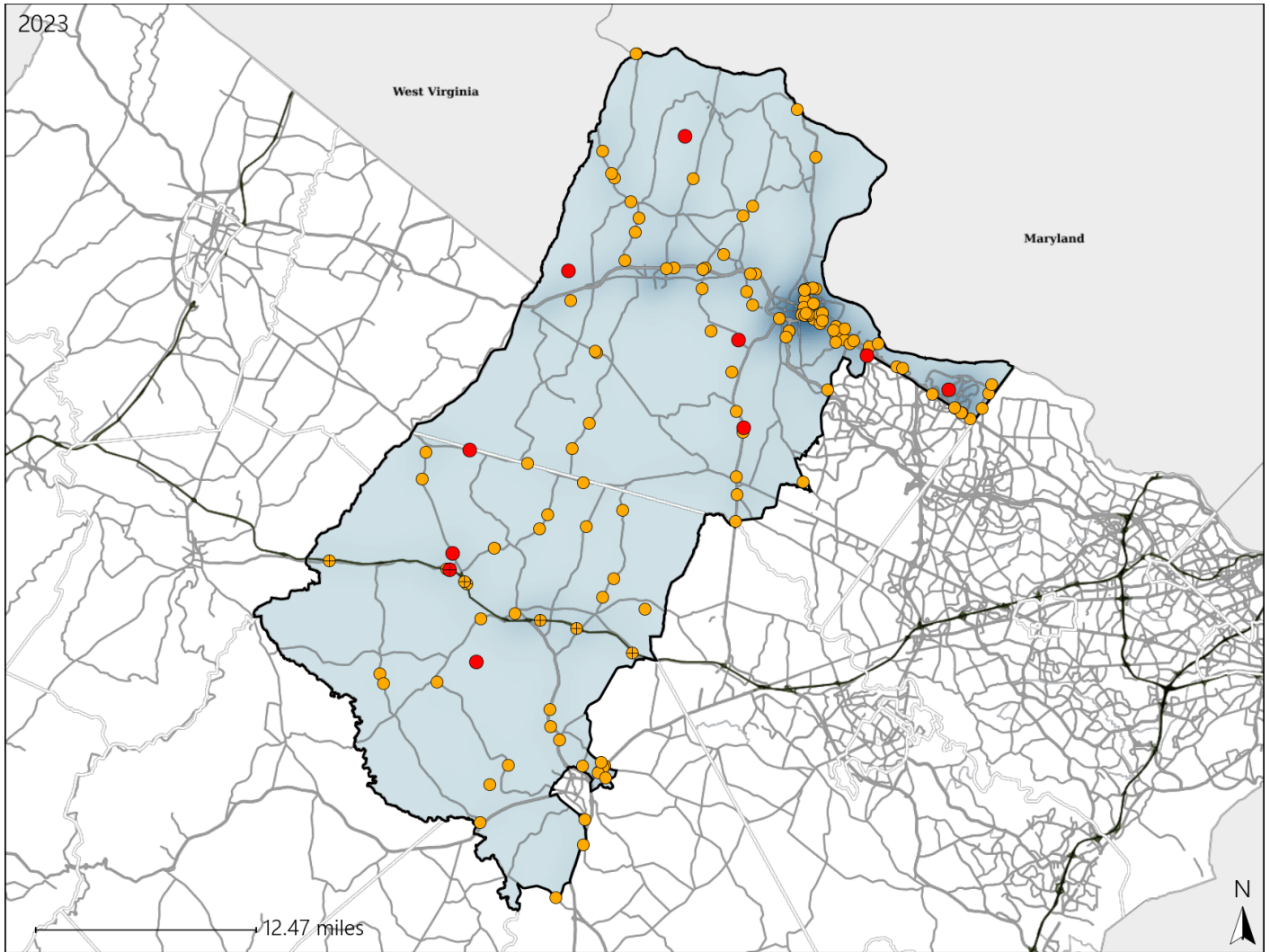


# Virginia Senate District 31 Crash Statistics

Report Generated May, 2024

	Count	Highest Time Period(s)	Highest Day(s)	Highest Month(s)
<b>Fatal Crashes</b>	<b>10</b>	Noon - 2:59pm	Sunday	May
<b>Resulting Fatalities</b>	<b>11</b>	(30%)	(30%)	(40%)
<b>Serious Injury Crashes</b>	<b>125</b>	3:00pm - 5:59pm	Saturday	June
		(22%)	(21%)	(14%)



### Senate District 31 Crashes

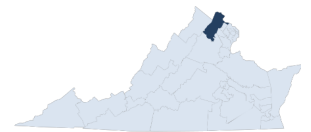
Interstate Crashes

- Fatal
- Serious Injury

Non-interstate Crashes

- Fatal
- Serious Injury

The blue gradient represents the density of all crashes.

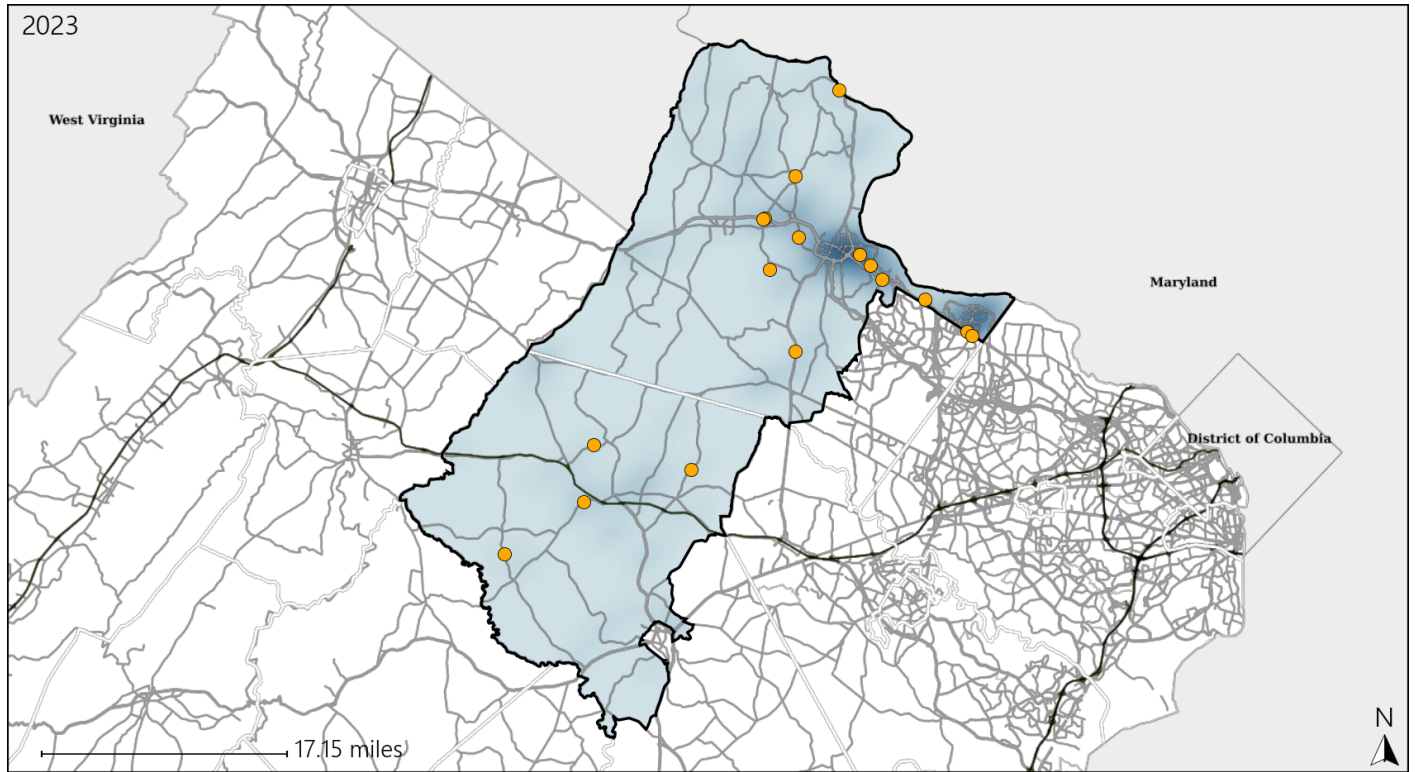


Available Crash Data - Calendar Year (CY)	CY 2020	CY 2021	CY 2022	CY 2023
Total Crashes	2359	2653	2736	2891
Fatal Crashes	12	10	19	10
Injury Crashes	591	625	615	698

# Virginia Senate District 31 Alcohol Crash Statistics

Report Generated May, 2024

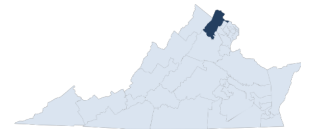
	Count	Highest Time Period(s)	Highest Day(s)	Highest Month(s)
<b>Fatal Crashes</b>	0	-	-	-
<b>Resulting Fatalities</b>	0	-	-	-
<b>Serious Injury Crashes</b>	17	Midnight - 2:59am (29%)	Friday - Saturday (48%)	October (24%)



### Senate District 31 Alcohol-Related Crashes

Interstate Crashes                      Non-interstate Crashes  
 ● Fatal                                      ● Fatal  
 ⊕ Serious Injury                          ⊕ Serious Injury

The blue gradient represents the density of all alcohol-related crashes.

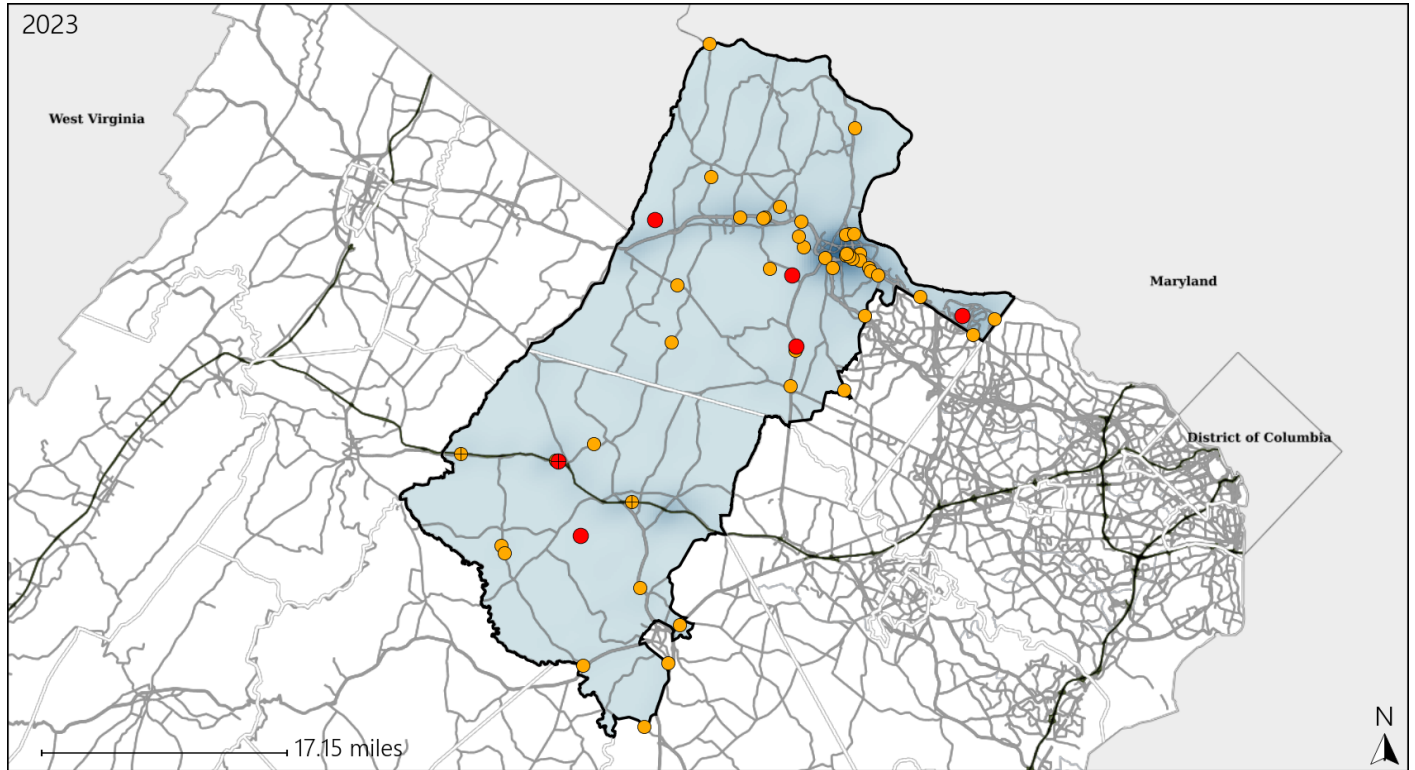


Available Crash Data - Calendar Year (CY)	CY 2020	CY 2021	CY 2022	CY 2023
Total Crashes	2359	2653	2736	2891
Fatal Crashes	12	10	19	10
Injury Crashes	591	625	615	698
Alcohol-Related Fatal Crashes	5	2	8	0
Percent of Alcohol-Related Fatal Crashes to Total Fatal Crashes	42%	20%	42%	0%
Alcohol-Related Injury Crashes	59	64	68	75
Percent of Alcohol-Related Injury Crashes to Total Injury Crashes	10%	10%	11%	11%

# Virginia Senate District 31 Speed Crash Statistics

Report Generated May, 2024

	Count	Highest Time Period(s)	Highest Day(s)	Highest Month(s)
<b>Fatal Crashes</b>	<b>6</b>	<b>3:00am - 5:59am</b>	<b>Saturday • Sunday</b>	<b>May</b>
<b>Resulting Fatalities</b>	<b>7</b>	<b>3:00pm - 5:59pm</b> (34%)	<b>(66%)</b>	<b>(33%)</b>
<b>Serious Injury Crashes</b>	<b>46</b>	<b>3:00pm - 5:59pm</b> (22%)	<b>Saturday • Thursday</b> (48%)	<b>May</b> (20%)



### Senate District 31 Speed-Related Crashes

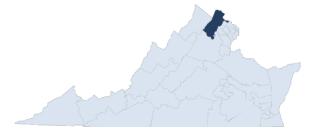
Interstate Crashes

Non-interstate Crashes

- Fatal
- Serious Injury

- Fatal
- Serious Injury

The blue gradient represents the density of all speed-related crashes.

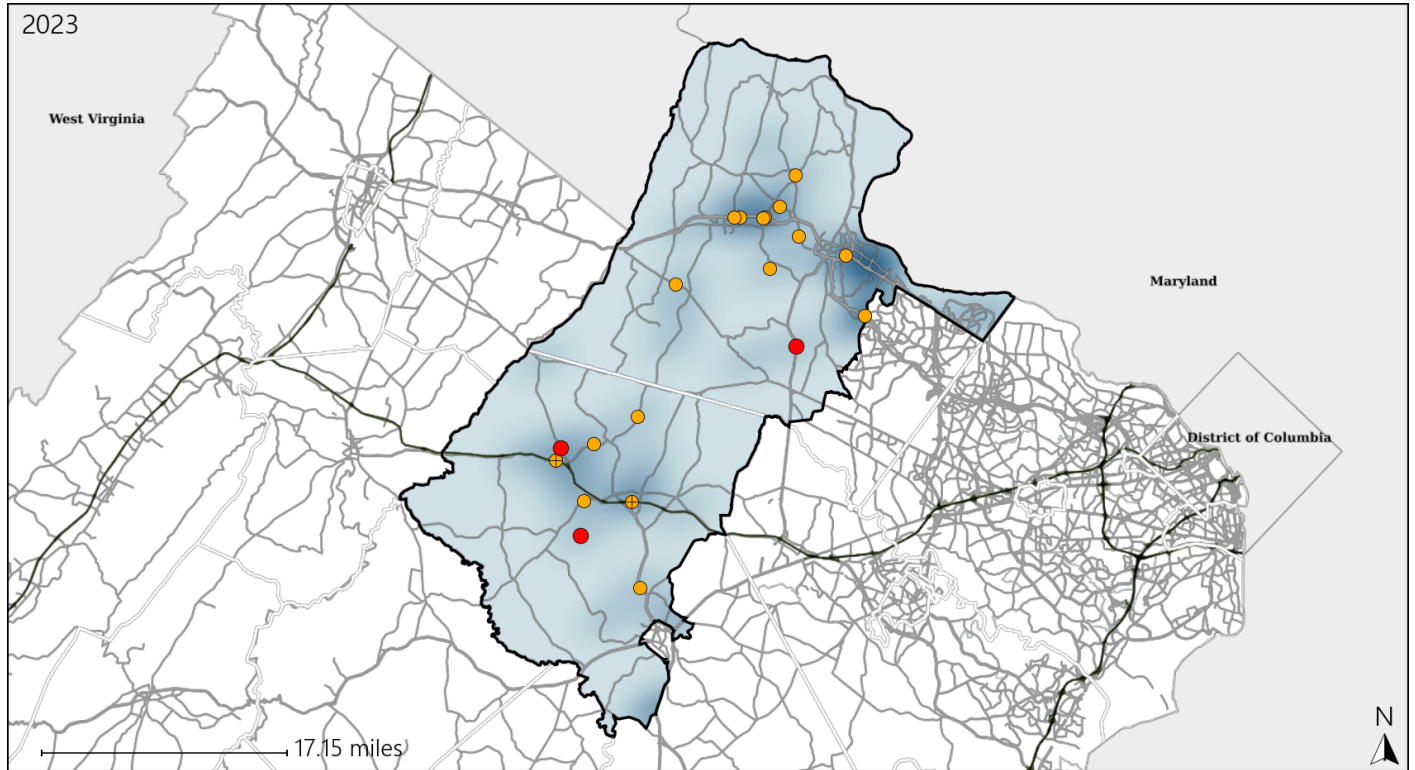


Available Crash Data - Calendar Year (CY)	CY 2020	CY 2021	CY 2022	CY 2023
Total Crashes	2359	2653	2736	2891
Fatal Crashes	12	10	19	10
Injury Crashes	591	625	615	698
Speed-Related Fatal Crashes	4	3	10	6
Percent of Speed-Related Fatal Crashes to Total Fatal Crashes	33%	30%	53%	60%
Speed-Related Injury Crashes	128	163	155	183
Percent of Speed-Related Injury Crashes to Total Injury Crashes	22%	26%	25%	26%

# Virginia Senate District 31 Unrestrained Crash Statistics

Report Generated May, 2024

	Count	Highest Time Period(s)	Highest Day(s)	Highest Month(s)
<b>Fatal Crashes</b>	<b>3</b>	<b>3:00am - 5:59am</b>	<b>Friday • Sunday</b>	<b>May</b>
<b>Unrestrained Fatalities</b>	<b>3</b>	<b>Midnight - 2:59am</b> (66%)	<b>(66%)</b>	<b>(67%)</b>
<b>Serious Injury Crashes</b>	<b>17</b>	<b>6:00am - 8:59am</b> (29%)	<b>Thursday</b> (29%)	<b>May</b> (24%)



### Senate District 31 Unrestrained-Related Crashes

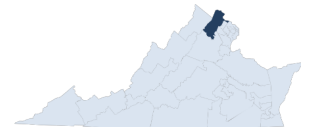
Interstate Crashes

Non-interstate Crashes

- Fatal
- Serious Injury

- Fatal
- Serious Injury

The blue gradient represents the density of all unrestrained-related crashes.

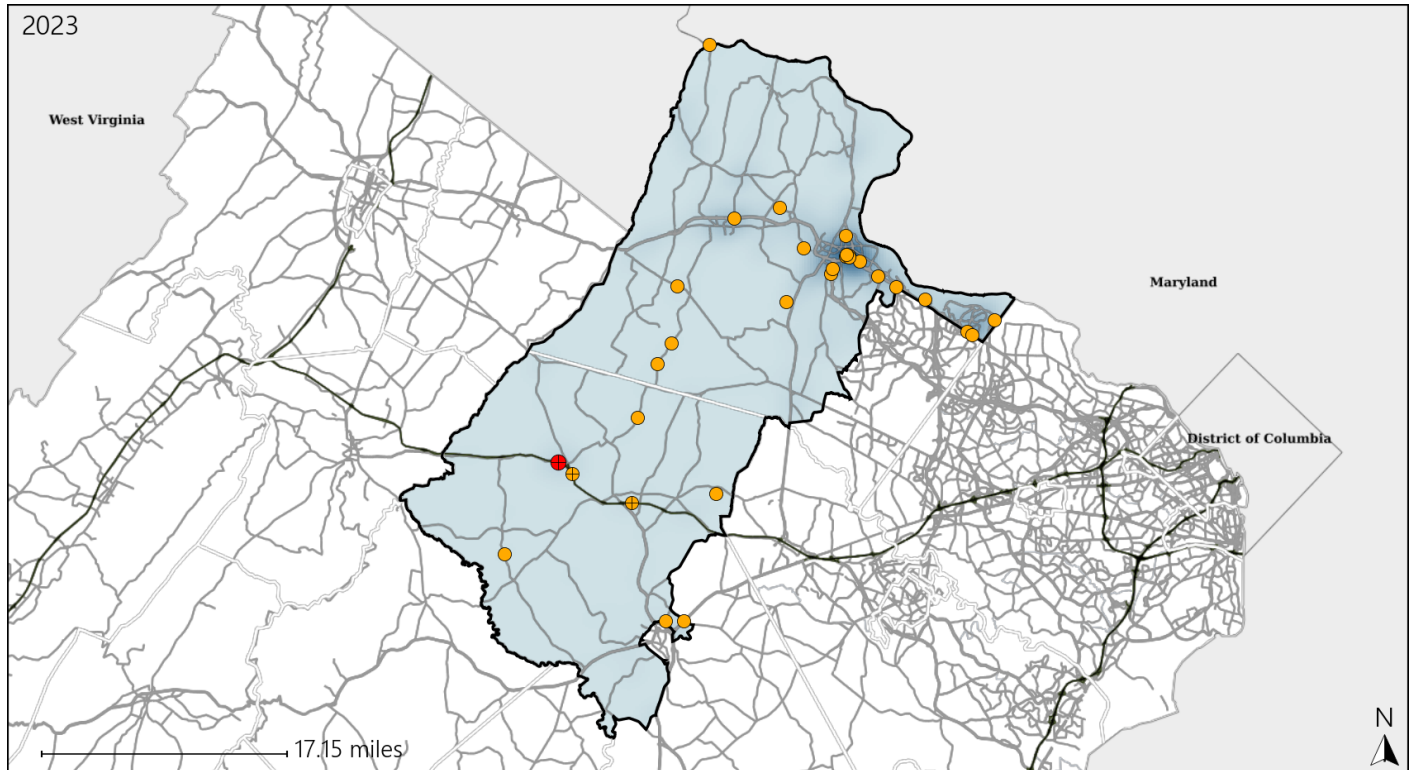


Available Crash Data - Calendar Year (CY)	CY 2020	CY 2021	CY 2022	CY 2023
<b>Total Crashes</b>	<b>2359</b>	<b>2653</b>	<b>2736</b>	<b>2891</b>
<b>Fatalities</b>	<b>13</b>	<b>10</b>	<b>22</b>	<b>11</b>
<b>Injuries</b>	<b>883</b>	<b>957</b>	<b>920</b>	<b>1064</b>
<b>Unrestrained Fatalities</b>	<b>2</b>	<b>3</b>	<b>10</b>	<b>3</b>
<b>Percent of Unrestrained Fatalities to Total Fatalities</b>	<b>15%</b>	<b>30%</b>	<b>45%</b>	<b>27%</b>
<b>Unrestrained Injuries</b>	<b>53</b>	<b>52</b>	<b>43</b>	<b>60</b>
<b>Percent of Unrestrained Injuries to Total Injuries</b>	<b>6%</b>	<b>5%</b>	<b>5%</b>	<b>6%</b>

# Virginia Senate District 31 Distracted Driving Crash Statistics

Report Generated May, 2024

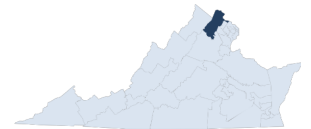
	Count	Highest Time Period(s)	Highest Day(s)	Highest Month(s)
<b>Fatal Crashes</b>	<b>1</b>	<b>6:00am - 8:59am</b>	<b>Wednesday</b>	<b>September</b>
<b>Resulting Fatalities</b>	<b>1</b>	(100%)	(100%)	(100%)
<b>Serious Injury Crashes</b>	<b>30</b>	<b>3:00pm - 5:59pm</b>	<b>Thursday</b>	<b>December • May</b>
		(20%)	(30%)	(26%)



## Senate District 31 Distracted Driving-Related Crashes

- |                    |                        |
|--------------------|------------------------|
| Interstate Crashes | Non-interstate Crashes |
| Fatal              | Fatal                  |
| Serious Injury     | Serious Injury         |

The blue gradient represents the density of all distracted driving-related crashes.



Available Crash Data - Calendar Year (CY)	CY 2020	CY 2021	CY 2022	CY 2023
Total Crashes	2359	2653	2736	2891
Fatal Crashes	12	10	19	10
Injury Crashes	591	625	615	698
Distracted Driving-Related Fatal Crashes	2	0	1	1
Percent of Distracted Driving-Related Fatal Crashes to Total Fatal Crashes	17%	0%	5%	10%
Distracted Driving-Related Injury Crashes	137	140	133	145
Percent of Distracted Driving-Related Injury Crashes to Total Injury Crashes	23%	22%	22%	21%